

HDC C HX SM10.0AG**Weidmüller Interface GmbH & Co. KG**

Klingenbergstraße 26

D-32758 Detmold

Germany

www.weidmueller.com

Crimps provide a electrical and mechanical connection between wire and contact that is both secure and reliable. The optimal crimp connection is gas-tight and corrosion-resistant.

General ordering data

Version	Heavy-duty connectors, Crimp contact, HQ, Male, Conductor cross-section, max.: 8, turned, Copper alloy
Order No.	1526150000
Type	HDC C HX SM10.0AG
GTIN (EAN)	4050118332131
Qty.	25 items

HDC C HX SM10.0AG

Weidmüller Interface GmbH & Co. KG

Klingenbergstraße 26

D-32758 Detmold

Germany

www.weidmueller.com

Technical data

Approvals

Approvals



ROHS

Conform

Dimensions and weights

Net weight

3.18 g

Environmental Product Compliance

RoHS Compliance Status

Compliant with exemption

RoHS Exemption (if applicable/known)

6c

REACH SVHC

Lead 7439-92-1

SCIP

6eabd5ae-2d6b-409e-8bdf-87c27ee10e40

General data

Contact diameter, male Ø

4 mm

Stripping length, rated connection

15 mm

Version insert

HQ

Conductor cross-section, max.

8 mm²

Plugging cycles

≥ 500

Basic material

Copper alloy

Cross-section for connected wire

8 mm²

Conductor cross-section, max. AWG

AWG 8

Type of connection

Crimp connection

Volume resistance

≤1 mΩ

Surface finish

silver

Type

Male

Production methods

turned

Material of contact

Copper alloy

Important note

Product information

flexible stranded conductor Style 1231 or 1028 only

Classifications

ETIM 6.0

EC000796

ETIM 8.0

EC000796

ETIM 10.0

EC000796

ECLASS 9.1

27-44-02-04

ECLASS 11.0

27-44-02-04

ECLASS 13.0

27-44-02-04

ECLASS 15.0

27-44-02-04

ETIM 7.0

EC000796

ETIM 9.0

EC000796

ECLASS 9.0

27-44-02-04

ECLASS 10.0

27-44-02-04

ECLASS 12.0

27-44-02-04

ECLASS 14.0

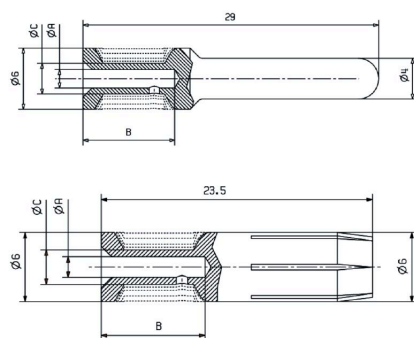
27-44-02-04

HDC C HX SM10.0AG

Weidmüller Interface GmbH & Co. KG
Klingenbergstraße 26
D-32758 Detmold
Germany

www.weidmueller.com

Drawings



HDC C HX SM10.0AG

Weidmüller Interface GmbH & Co. KG

Klingenbergstraße 26

D-32758 Detmold

Germany

www.weidmueller.com

Accessories

Crimping tools



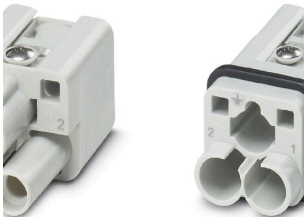
Crimping tools for turned contacts

- Ratchet guarantees precise crimping
- Release option in the event of incorrect operation
- With stop for exact positioning of the contacts.

General ordering data

Type	CTIN CM 3.6	Version
Order No.	9205440000	Crimping tool for contacts, 1.5mm ² , 10mm ² , 4-indent crimp
GTIN (EAN)	4032248734146	
Qty.	1 ST	

2-pole



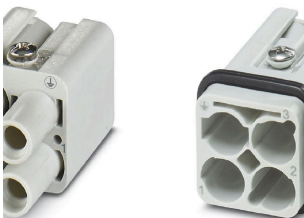
The HQ series - big features in a compact design. The electrical characteristics speak for themselves. The wire connection level is designed for crimp contacts. The proven crimp connection method has been in standard use for decades. Crimp contacts are not included in the scope of delivery of inserts.

General ordering data

Type	HDC HQ 2 FC	Version
Order No.	3103510000	HDC insert, Female, 400 V, 40 A, Number of poles: 2, Crimp contact,
GTIN (EAN)	4099987151238	Installation size: 1
Qty.	1 ST	

Type	HDC HQ 2 MC	Version
Order No.	3103500000	HDC insert, Male, 400 V, 40 A, Number of poles: 2, Crimp contact,
GTIN (EAN)	4099987151221	Installation size: 1
Qty.	1 ST	

3-pole



The HQ series - big features in a compact design. The electrical characteristics speak for themselves. The wire connection level is designed for crimp contacts. The proven crimp connection method has been in standard use for decades. Crimp contacts are not included in the scope of delivery of inserts.

HDC C HX SM10.0AG

Weidmüller Interface GmbH & Co. KG

Klingenbergstraße 26

D-32758 Detmold

Germany

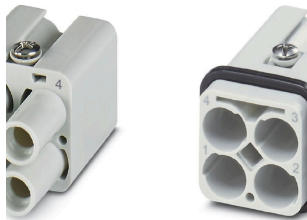
www.weidmueller.com

Accessories

General ordering data

Type	HDC HQ 3 FC	Version
Order No.	3103530000	HDC insert, Female, 400 V, 40 A, Number of poles: 3, Crimp contact,
GTIN (EAN)	4099987151252	Installation size: 1
Qty.	1 ST	
Type	HDC HQ 3 MC	Version
Order No.	3103520000	HDC insert, Male, 400 V, 40 A, Number of poles: 3, Crimp contact,
GTIN (EAN)	4099987151245	Installation size: 1
Qty.	1 ST	

4-pole



The HQ series - big features in a compact design. The electrical characteristics speak for themselves. The wire connection level is designed for crimp contacts. The proven crimp connection method has been in standard use for decades. Crimp contacts are not included in the scope of delivery of inserts.

General ordering data

Type	HDC HQ 4 FC	Version
Order No.	3103550000	HDC insert, Female, 830 V, 40 A, Number of poles: 4, Crimp contact,
GTIN (EAN)	4099987151559	Installation size: 1
Qty.	1 ST	
Type	HDC HQ 4 MC	Version
Order No.	3103540000	HDC insert, Male, 830 V, 40 A, Number of poles: 4, Crimp contact,
GTIN (EAN)	4099987151283	Installation size: 1
Qty.	1 ST	

4/2-pole



The HQ series - big features in a compact design. The electrical characteristics speak for themselves. You can also use the proven HD and HX crimp contacts here. The wire connection level is designed for crimp contacts. The proven crimp connection has been in standard use for decades.

Crimp contacts are not included in the scope of delivery of inserts.

Pole count: 4/2 (+PE)

Rated current: 40/10 A

Rated voltage: 690 / 250 V

Rated voltage acc. to UL/CSA: 600 V AC/DC

General ordering data

Type	HDC HQ 4/2 FC	Version
Order No.	1003160000	HDC insert, Female, 690 V, 40 A, Number of poles: 6, Crimp connection, Installation size: HQ
GTIN (EAN)	4032248698158	
Qty.	1 ST	

HDC C HX SM10.0AG**Weidmüller Interface GmbH & Co. KG**

Klingenbergstraße 26

D-32758 Detmold

Germany

www.weidmueller.com**Accessories**

Type	HDC HQ 4/2 MC	Version
Order No.	1003170000	HDC insert, Male, 690 V, 40 A, Number of poles: 6, Crimp
GTIN (EAN)	4032248698165	connection, Installation size: HQ
Qty.	1 ST	