

SAMPLE CH20M22 3/3

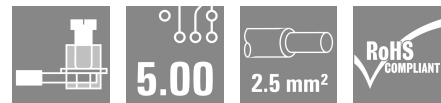
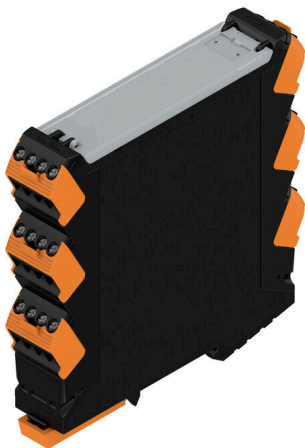
Weidmüller Interface GmbH & Co. KG

Klingenbergstraße 26

D-32758 Detmold

Germany

www.weidmueller.com



Scalability, individual design and cost efficiency

The CH20M22 modular electronics housing offers a flexible and efficient solution for common electronics applications. With a width of 22 mm, it is perfect for integrating the PCB and connecting SPE (Single Pair Ethernet) and RJ45 connections. This combination enables reliable and future-proof data transmission in compact applications. Automated THT and THR soldering processes, coding options and CAD data ensure efficient production. Various connection technologies, including screw and tension clamp connections, enable application-specific design. The sophisticated synergy of design, connection technology and functionality ensures a safe, user-friendly and market-driven solution.

As a premium housing, the modular CH20M22 housing offers a durable and robust design.

Perfect for anyone who values quality, safety and a scalable housing concept.

General ordering data

Version	Electronics housing sample, OMNIMATE Housing - series CH20M black, Sample kit for developers, consisting of individual parts incl. female plug, Complete enclosure, Connection technology, Width: 22.5 mm
Order No.	1519370000
Type	SAMPLE CH20M22 3/3
GTIN (EAN)	4050118327045
Qty.	1 items

SAMPLE CH20M22 3/3

Weidmüller Interface GmbH & Co. KG
 Klingenbergstraße 26
 D-32758 Detmold
 Germany

www.weidmueller.com

Technical data

Approvals

ROHS	Conform
------	---------

Dimensions and weights

Depth	113.6 mm	Depth (inches)	4.4724 inch
Height	117.2 mm	Height (inches)	4.6142 inch
Width	22.5 mm	Width (inches)	0.8858 inch
Length	0 mm	Net weight	140 g

Temperatures

Installation temperature	-25 °C...85 °C	Humidity	5 - 93% rel. humidity, Tu = 40°C, no condensation
--------------------------	----------------	----------	---------------------------------------------------

Environmental Product Compliance

RoHS Compliance Status	Compliant without exemption
REACH SVHC	No SVHC above 0.1 wt%

Rated data acc. to IEC

Rated current, max. number of poles (Tu=20°C)	10 A	Rated current, max. number of poles (Tu=40°C)	9 A
Rated voltage for surge voltage class / pollution degree II/2	400 V	Rated voltage for surge voltage class / pollution degree III/2	320 V
Rated voltage for surge voltage class / pollution degree III/3	250 V	Rated impulse voltage for surge voltage class/ pollution degree II/2	250 kV
Rated impulse voltage for surge voltage class/ pollution degree III/2	4 kV	Rated impulse voltage for surge voltage class/ contamination degree III/3	4 kV

Material data

UL 94 flammability rating	V-0	Insulating material	PA 66 GF 30
Insulating material group	II	Surface finish	untreated
Basic material	Plastic	Comparative Tracking Index (CTI)	400 ≤ CTI <600

General data

Colour	black	Protection degree	IP20 in installed state
Mounting rail	TS 35	Colour chart (similar)	RAL 9011
Encapsulation option	No		

Design - IN requirements

Tolerance for the PCB shape	±0.1 mm	PCB thickness	1.6 mm
Tolerance of circuit board thickness	±0.15 mm		

Assembly properties

Number of connection levels	3	Number of ventilation openings	0
Number of poles	4	Cross-connection	No
Type of contact to PCB	Solder connection, direct	Type of connection	pluggable

SAMPLE CH20M22 3/3

Weidmüller Interface GmbH & Co. KG
 Klingenbergstraße 26
 D-32758 Detmold
 Germany

www.weidmueller.com

Technical data

Housing properties

Flip cover mountable	Yes	Marker integrateable	Yes
Cut out as preparation for functional portNo integrated	No	Color of clip-on foot	orange
Cross-connection	No	Number of connection levels	3
Number of poles	4		

Connectable conducteurs

Wire connection method	Clamping yoke connection	Stripping length	8 mm
Tightening torque, min.	0.4 Nm	Tightening torque, max.	0.5 Nm
Clamping range, min.	0.13 mm ²	Clamping range, max.	2.5 mm ²
Wire connection cross section AWG, min.	AWG 26	Wire connection cross section AWG, max.	AWG 14
Solid, min. H05(07) V-U	0.2 mm ²	Solid, max. H05(07) V-U	2.5 mm ²
Stranded, max. H07V-R	2.5 mm ²	Flexible, min. H05(07) V-K	0.2 mm ²
w. plastic collar ferrule, DIN 46228 pt 4, 0.25 mm ² min.		w. plastic collar ferrule, DIN 46228 pt 4, 2.5 mm ² max.	
w. wire end ferrule, DIN 46228 pt 1, 0.25 mm ² min.		w. wire end ferrule, DIN 46228 pt 1, 2.5 mm ² max.	
Max. clamping range	2.5 mm ²		

Classifications

ETIM 8.0	EC001031	ETIM 9.0	EC001031
ETIM 10.0	EC001031	ECLASS 14.0	27-19-01-01
ECLASS 15.0	27-19-01-01		

SAMPLE CH20M22 3/3

Weidmüller Interface GmbH & Co. KG
Klingenbergstraße 26
D-32758 Detmold
Germany

www.weidmueller.com

Drawings

