

ACT20P-CMT-60-RC-S

Weidmüller Interface GmbH & Co. KG
 Klingenbergstraße 26
 D-32758 Detmold
 Germany

www.weidmueller.com

Similar to illustration



ACT20P: The flexible solution

- Precise and highly functional signal converters
- Release levers simplify handling

General ordering data

Version	Current-measuring transducer, Limit value monitoring, Input : 0...40/50/60 A, Relay output, Current-carrying cable in feed-through hole
Order No.	1510390000
Type	ACT20P-CMT-60-RC-S
GTIN (EAN)	4050118325485
Qty.	1 items

ACT20P-CMT-60-RC-S

Weidmüller Interface GmbH & Co. KG
 Klingenbergstraße 26
 D-32758 Detmold
 Germany

www.weidmueller.com

Technical data

Approvals

Approvals



ROHS	Conform
UL File Number Search	UL Website
Certificate no. (cULus)	E141197

Dimensions and weights

Depth	113.6 mm	Depth (inches)	4.4724 inch
Height	119.2 mm	Height (inches)	4.6929 inch
Width	22.5 mm	Width (inches)	0.8858 inch
Net weight	158 g		

Temperatures

Storage temperature	-40 °C...85 °C	Operating temperature	-25 °C...60 °C
Humidity	5...95 %, no condensation		

Probability of failure

MTTF	100 a
------	-------

Environmental Product Compliance

RoHS Compliance Status	Compliant with exemption
RoHS Exemption (if applicable/known)	6c, 7a, 7cl
REACH SVHC	Lead 7439-92-1
SCIP	2f6dd957-421a-46db-a0c2-cf1609156924

Input

Number inputs	1	Input frequency	AC: 15...700 Hz (true root mean square)
Input measurement range	configurable, 0...40/50/60 A AC (RMS) or DC, max. peak current 10 × I _{Input} (1 s). For DC current measurement (AA): Current direction display at the output (-/+ analog value)	Input signal	Current-carrying cable in feed-through hole
Overload behaviour	Max. peak current: 10 × I _{Input} for 1s		

Output (digital)

Rated switching current	6 A	Continuous current	2 × I _{Input}
Number of digital outputs	1	Max. switching voltage, AC	250 V
Max. switching voltage, DC	24 V	Type	Relay, 1 CO contact, normal / inverse adjustment
Alarm function	Surge current, Under-current, Alarm delay: 0...10 s, Hysteresis 5% / 10%		

ACT20P-CMT-60-RC-S

Weidmüller Interface GmbH & Co. KG

 Klingenbergstraße 26
 D-32758 Detmold
 Germany

www.weidmueller.com

Technical data

General data

Accuracy	<0.75 % FSR, <1.5 % FSR with measurement range 50/60 A AC	Protection degree	IP20
Supply voltage	16,8 V...31,2 V	Step response time	≤ 300 ms (RMS), ≤ 60 ms (AA)
Mounting rail	TS 35	Temperature coefficient	0.01%/K @ 0...40 A, 0.10%/K @ 40...55 A, 0.30%/K @ 55...60 A
Configuration	DIP switch and potentiometer	Power consumption, max.	2.2 W
Power consumption, typ.	0.9 W		

Insulation coordination

Impulse withstand voltage	6.4 kV (1.2/50 µs)	EMC standards	EN 61326-1
Test voltage	4 kV	Surge voltage category	III
Pollution severity	2	Galvanic isolation	3-way isolator, between input/output/supply
Insulation voltage	4 kVeff / 1 min.	Rated voltage	300 V AC eff

Connection data

Type of connection	Screw connection	Tightening torque, min.	0.4 Nm
Tightening torque, max.	0.6 Nm	Clamping range, rated connection	1.5 mm ²
Clamping range, min.	0.5 mm ²	Clamping range, max.	2.5 mm ²
Wire connection cross section AWG, min.	AWG 26	Wire connection cross section AWG, max.	AWG 12

Part description

Product description	<p>The ACT20P-CMT-XX-(AO)-RC-S series of devices measure and monitor AC and DC currents of up to 60 A. The real effective value method used allows for precise measurement, even for distorted current curve shapes. The devices feature integrated limit value monitoring with an adjustable switching threshold, delay and hysteresis, as well as a relay output.</p> <p>Features</p> <ul style="list-style-type: none"> • Real effective value measurement (True RMS) or arithmetic averaging (AA) measurement and contactless through-hole technology • Limit value monitoring for overcurrent or undercurrent • Relay output by means of the open-circuit / closed-circuit principle • Adjustable trigger delay for filtering current peaks • Operational status and error display on a front panel LED and output signalling according to NE43, NE44, NE107 • Galvanic four-way insulation for secure isolation according to IEC/EN 61010-2-201
---------------------	---

Classifications

ETIM 8.0	EC002475	ETIM 9.0	EC002475
ETIM 10.0	EC002475	ECLASS 14.0	27-21-01-23
ECLASS 15.0	27-21-01-23		

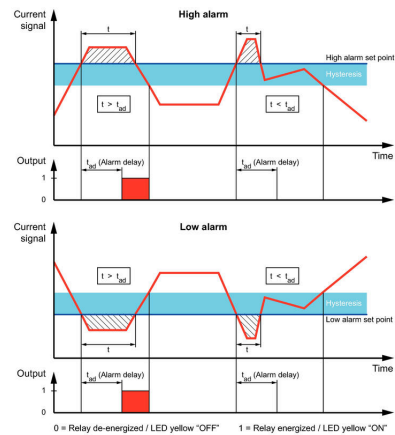
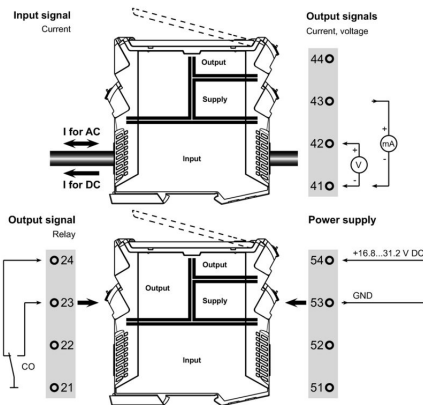
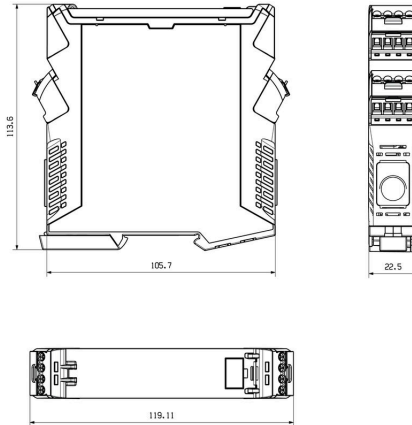
ACT20P-CMT-60-RC-S

Weidmüller Interface GmbH & Co. KG
 Klingenbergstraße 26
 D-32758 Detmold
 Germany

Drawings

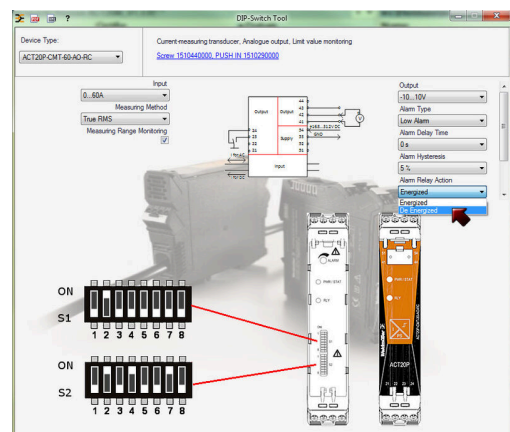
www.weidmueller.com

Dimensioned drawing



Configuration

Current input range		DIP switch S1		Alarm relay action		DIP switch S2	
1	2	3	4	5	6	7	8
0...40 A				Energized			
0...50 A				De-energized			
0...60 A							
Measuring method		Alarm hysteresis		Alarm type			
1	2	3	4	5	6	7	8
True RMS				5 %			
Arithmetic average				10 %			
Alarm delay time							
1	2	3	4	5	6	7	8
0 s				High alarm			
2 s				Low alarm			
5 s							
10 s							



example for DIP switch setting (with ACT20 tool)