

**ACT20P-CMT-60-RC-S**

**Weidmüller Interface GmbH & Co. KG**  
 Klingenbergstraße 26  
 D-32758 Detmold  
 Germany

www.weidmueller.com

**Similar to illustration**



**ACT20P: The flexible solution**

- Precise and highly functional signal converters
- Release levers simplify handling

**General ordering data**

Version	Current-measuring transducer, Limit value monitoring, Input : 0...40/50/60 A, Relay output, Current-carrying cable in feed-through hole
Order No.	<a href="#">1510390000</a>
Type	ACT20P-CMT-60-RC-S
GTIN (EAN)	4050118325485
Qty.	1 items

## ACT20P-CMT-60-RC-S

Weidmüller Interface GmbH &amp; Co. KG

Klingenbergstraße 26

D-32758 Detmold

Germany

www.weidmueller.com

## Technical data

## Approvals

Approvals



ROHS Conform

UL File Number Search [UL Website](#)

Certificate no. (cULus) E141197

## Dimensions and weights

Depth	113.6 mm	Depth (inches)	4.4724 inch
Height	119.2 mm	Height (inches)	4.6929 inch
Width	22.5 mm	Width (inches)	0.8858 inch
Net weight	158 g		

## Temperatures

Storage temperature	-40 °C...85 °C	Operating temperature	-25 °C...60 °C
Humidity	5...95 %, no condensation		

## Probability of failure

MTTF 100 a

## Environmental Product Compliance

RoHS Compliance Status	Compliant with exemption
RoHS Exemption (if applicable/known)	6c, 7a, 7cl
REACH SVHC	Lead 7439-92-1
SCIP	2f6dd957-421a-46db-a0c2-cf1609156924

## Input

Number inputs	1	Input frequency	AC: 15...700 Hz (true root mean square)
Input measurement range	configurable, 0...40/50/60 A AC (RMS) or DC, max. peak current $10 \times I_{\text{Input}}$ (1 s). For DC current measurement (AA): Current direction display at the output (-/+ analog value)	Input signal	Current-carrying cable in feed-through hole
Overload behaviour	Max. peak current: $10 \times I_{\text{Input}}$ for 1s		

## Output (digital)

Rated switching current	6 A	Continuous current	$2 \times I_{\text{Input}}$
Number of digital outputs	1	Max. switching voltage, AC	250 V
Max. switching voltage, DC	24 V	Type	Relay, 1 CO contact, normal / inverse adjustment
Alarm function	Surge current, Under-current, Alarm delay: 0...10 s, Hysteresis 5% / 10%		

## ACT20P-CMT-60-RC-S

Weidmüller Interface GmbH &amp; Co. KG

Klingenbergstraße 26

D-32758 Detmold

Germany

www.weidmueller.com

## Technical data

## General data

Accuracy	<0.75 % FSR, <1.5 % FSR with measurement range 50/60 A AC	Protection degree	IP20
Supply voltage	16,8 V...31,2 V	Step response time	≤ 300 ms (RMS), ≤ 60 ms (AA)
Mounting rail	TS 35	Temperature coefficient	0.01%/K @ 0...40 A, 0.10%/K @ 40...55 A, 0.30%/K @ 55...60 A
Configuration	DIP switch and potentiometer	Power consumption, max.	2.2 W
Power consumption, typ.	0.9 W		

## Insulation coordination

Impulse withstand voltage	6.4 kV (1.2/50 μs)	EMC standards	EN 61326-1
Test voltage	4 kV	Surge voltage category	III
Pollution severity	2	Galvanic isolation	3-way isolator, between input/output/supply
Insulation voltage	4 kVeff / 1 min.	Rated voltage	300 V AC eff

## Connection data

Type of connection	Screw connection	Tightening torque, min.	0.4 Nm
Tightening torque, max.	0.6 Nm	Clamping range, rated connection	1.5 mm <sup>2</sup>
Clamping range, min.	0.5 mm <sup>2</sup>	Clamping range, max.	2.5 mm <sup>2</sup>
Wire connection cross section AWG, min.	AWG 26	Wire connection cross section AWG, max.	AWG 12

## Part description

Product description

The ACT20P-CMT-XX-(AO)-RC-S series of devices measure and monitor AC and DC currents of up to 60 A. The real effective value method used allows for precise measurement, even for distorted current curve shapes. The devices feature integrated limit value monitoring with an adjustable switching threshold, delay and hysteresis, as well as a relay output..

## Features

- Real effective value measurement (True RMS) or arithmetic averaging (AA) measurement and contactless through-hole technology
- Limit value monitoring for overcurrent or undercurrent
- Relay output by means of the open-circuit / closed-circuit principle
- Adjustable trigger delay for filtering current peaks
- Operational status and error display on a front panel LED and output signalling according to NE43, NE44, NE107
- Galvanic four-way insulation for secure isolation according to IEC/EN 61010-2-201

## Classifications

ETIM 8.0	EC002475	ETIM 9.0	EC002475
ETIM 10.0	EC002475	ECLASS 14.0	27-21-01-23
ECLASS 15.0	27-21-01-23		

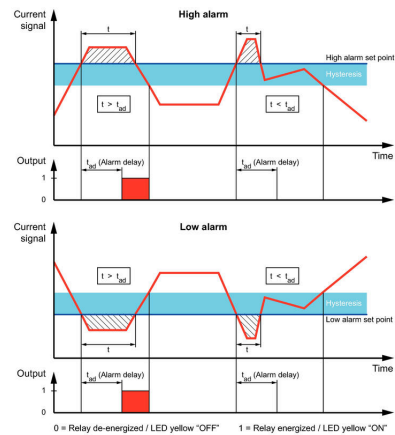
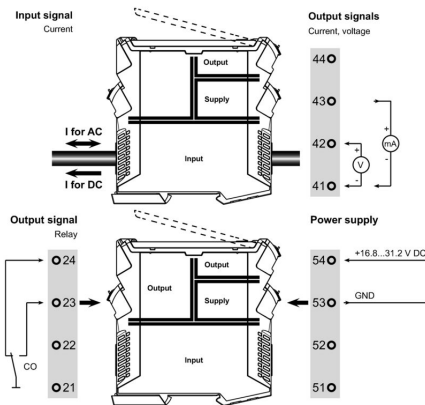
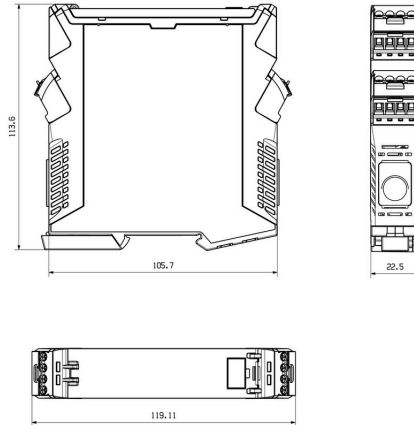
**ACT20P-CMT-60-RC-S**

**Weidmüller Interface GmbH & Co. KG**  
 Klingenbergstraße 26  
 D-32758 Detmold  
 Germany

**Drawings**

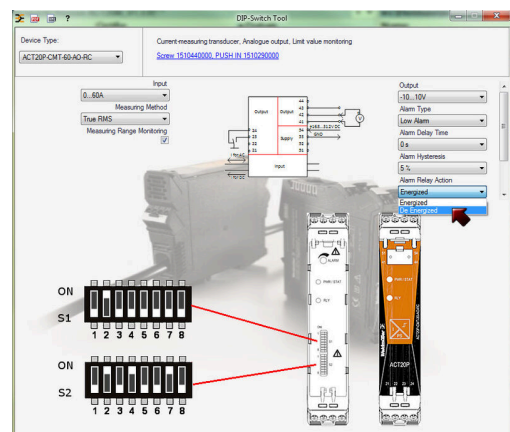
www.weidmueller.com

**Dimensioned drawing**



**Configuration**

DIP switch S1		DIP switch S2	
<b>Current input range</b>	1 2 3 4 5 6 7 8	<b>Alarm relay action</b>	1 2 3 4 5 6 7 8
0...40 A	<input type="checkbox"/>	Energized	<input type="checkbox"/>
0...50 A	<input type="checkbox"/>	De-energized	<input type="checkbox"/>
0...60 A	<input checked="" type="checkbox"/>	<b>Alarm hysteresis</b>	1 2 3 4 5 6 7 8
<b>Measuring method</b>	1 2 3 4 5 6 7 8	5 %	<input type="checkbox"/>
True RMS	<input type="checkbox"/>	10 %	<input checked="" type="checkbox"/>
Arithmetic average	<input checked="" type="checkbox"/>	<b>Alarm type</b>	1 2 3 4 5 6 7 8
<b>Alarm delay time</b>	1 2 3 4 5 6 7 8	High alarm	<input type="checkbox"/>
0 s	<input type="checkbox"/>	Low alarm	<input checked="" type="checkbox"/>
2 s	<input type="checkbox"/>		
5 s	<input type="checkbox"/>		
10 s	<input checked="" type="checkbox"/>		



example for DIP switch setting (with ACT20 tool)

## ACT20P-CMT-60-RC-S

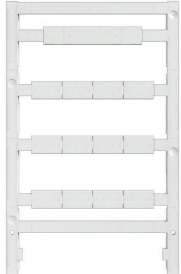
**Weidmüller Interface GmbH & Co. KG**

Klingenbergstraße 26  
D-32758 Detmold  
Germany

[www.weidmueller.com](http://www.weidmueller.com)

## Accessories

### Blank



ESG is the tried-and-tested marker in MultiCard format for use on many well-known electrical devices. The result is high-quality device marking with a high-contrast appearance.

Various types are available for devices from manufacturers like Siemens, ABB, Beckhoff etc.

Advantages at a glance:

- Tags for universal usage, self-adhesive or clip-on tags, depending on type
- For aligned equipment, e.g. circuit breakers, we supply ESG markers for clipping onto tag rails
- Individual laser-quality printing according to specifications

For custom printing: Please send us a file of our labeling software M-Print PRO or M-Print PRO Online (without installation) for your labeling specifications.

### General ordering data

Type	ESG 8/13.5/43.3 SAI AU	Version	
Order No.	<a href="#">1912130000</a>	ESG, Device markers x 13.5 mm, PA 66, Colour: Transparent, pluggable	
GTIN (EAN)	4032248541164		
Qty.	5 ST		
Type	ESG 6.6/20 BHZ 5.00/04	Version	
Order No.	<a href="#">1082540000</a>	ESG, Device markers x 20 mm, PA 66, Colour: white, pluggable	
GTIN (EAN)	4032248845439		
Qty.	200 ST		