

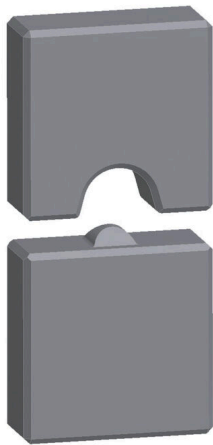
**ES EPG 45 DIN 50****Weidmüller Interface GmbH & Co. KG**

Klingenbergstraße 26

D-32758 Detmold

Germany

www.weidmueller.com



Crimping tools for cable lugs, connectors and wire-end ferrules with interchangeable inserts

- extremely fast processing thanks to hydraulic support
- large processing range up to 300 mm<sup>2</sup>
- 270° revolving quick-action crimping head
- automatic pressure limitation and monitoring via pressure sensor
- electronic control and monitoring of the crimping process
- Saving of all crimping cycles and error messages to internal memory
- Reading of all cycles and error messages via USB
- Li-ion rechargeable battery with charge status indicator: 18 V, 2 Ah

**General ordering data**

Version	50mm <sup>2</sup> , Indent crimp
Order No.	<a href="#">1501370000</a>
Type	ES EPG 45 DIN 50
GTIN (EAN)	4050118309706
Qty.	1 items

## ES EPG 45 DIN 50

**Weidmüller Interface GmbH & Co. KG**  
 Klingenbergstraße 26  
 D-32758 Detmold  
 Germany

[www.weidmueller.com](http://www.weidmueller.com)

## Technical data

## Dimensions and weights

Depth	12 mm	Depth (inches)	0.4724 inch
Height	60 mm	Height (inches)	2.3622 inch
Width	30 mm	Width (inches)	1.1811 inch
Net weight	155 g		

## Environmental Product Compliance

RoHS Compliance Status	Compliant without exemption
REACH SVHC	No SVHC above 0.1 wt%

## Crimp inserts

Crimping width	12 mm	Crimp cross-section copper	50
Crimping width in mm	12		

## Description of contact

Conductor cross-section, max. AWG	1	Conductor cross-section, min. AWG	1
Crimping range, max.	50 mm <sup>2</sup>		

## tool data crimping

Crimping type/profile	Indent crimp
Cable lug cross section	nominal 50 mm <sup>2</sup>

## Classifications

ETIM 8.0	EC001282	ETIM 9.0	EC001282
ETIM 10.0	EC001282	ECLASS 14.0	21-04-90-90
ECLASS 15.0	21-04-90-90		