

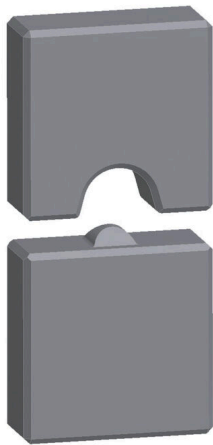
ES EPG 45 DIN 25**Weidmüller Interface GmbH & Co. KG**

Klingenbergstraße 26

D-32758 Detmold

Germany

www.weidmueller.com



Crimping tools for cable lugs, connectors and wire-end ferrules with interchangeable inserts

- extremely fast processing thanks to hydraulic support
- large processing range up to 300 mm²
- 270° revolving quick-action crimping head
- automatic pressure limitation and monitoring via pressure sensor
- electronic control and monitoring of the crimping process
- Saving of all crimping cycles and error messages to internal memory
- Reading of all cycles and error messages via USB
- Li-ion rechargeable battery with charge status indicator: 18 V, 2 Ah

General ordering data

Version	25mm ² , Indent crimp
Order No.	1501340000
Type	ES EPG 45 DIN 25
GTIN (EAN)	4050118309560
Qty.	1 items

ES EPG 45 DIN 25

Weidmüller Interface GmbH & Co. KG
 Klingenbergstraße 26
 D-32758 Detmold
 Germany

www.weidmueller.com

Technical data

Dimensions and weights

Depth	12 mm	Depth (inches)	0.4724 inch
Height	60 mm	Height (inches)	2.3622 inch
Width	30 mm	Width (inches)	1.1811 inch
Net weight	133.76 g		

Environmental Product Compliance

RoHS Compliance Status	Compliant without exemption
REACH SVHC	No SVHC above 0.1 wt%

Crimp inserts

Crimping width	12 mm	Crimp cross-section copper	25
Crimping width in mm	12		

Description of contact

Conductor cross-section, max. AWG	4	Conductor cross-section, min. AWG	4
Crimping range, max.	25 mm ²		

tool data crimping

Crimping type/profile	Indent crimp
Cable lug cross section	nominal 25 mm ²

Classifications

ETIM 8.0	EC001282	ETIM 9.0	EC001282
ETIM 10.0	EC001282	ECLASS 14.0	21-04-90-90
ECLASS 15.0	21-04-90-90		