

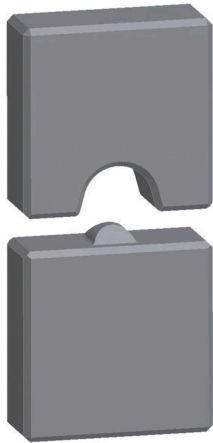
**ES EPG 45 DIN 10****Weidmüller Interface GmbH & Co. KG**

Klingenbergstraße 26

D-32758 Detmold

Germany

www.weidmueller.com



Crimping tools for cable lugs, connectors and wire-end ferrules with interchangeable inserts

- extremely fast processing thanks to hydraulic support
- large processing range up to 300 mm<sup>2</sup>
- 270° revolving quick-action crimping head
- automatic pressure limitation and monitoring via pressure sensor
- electronic control and monitoring of the crimping process
- Saving of all crimping cycles and error messages to internal memory
- Reading of all cycles and error messages via USB
- Li-ion rechargeable battery with charge status indicator: 18 V, 2 Ah

**General ordering data**

Version	10mm <sup>2</sup> , Indent crimp
Order No.	<a href="#">1501320000</a>
Type	ES EPG 45 DIN 10
GTIN (EAN)	4050118309577
Qty.	1 items

**ES EPG 45 DIN 10**

**Weidmüller Interface GmbH & Co. KG**  
 Klingenbergstraße 26  
 D-32758 Detmold  
 Germany

www.weidmueller.com

**Technical data**

**Dimensions and weights**

Depth	12 mm	Depth (inches)	0.4724 inch
Height	60 mm	Height (inches)	2.3622 inch
Width	30 mm	Width (inches)	1.1811 inch
Net weight	155 g		

**Environmental Product Compliance**

RoHS Compliance Status	Compliant without exemption
REACH SVHC	No SVHC above 0.1 wt%

**Crimp inserts**

Crimping width	8 mm	Crimp cross-section copper	10
Crimping width in mm	8		

**Description of contact**

Conductor cross-section, max. AWG	8	Conductor cross-section, min. AWG	8
Crimping range, max.	10 mm <sup>2</sup>		

**tool data crimping**

Crimping type/profile	Indent crimp
Cable lug cross section	nominal 10 mm <sup>2</sup>

**Classifications**

ETIM 8.0	EC001282	ETIM 9.0	EC001282
ETIM 10.0	EC001282	ECLASS 14.0	21-04-90-90
ECLASS 15.0	21-04-90-90		