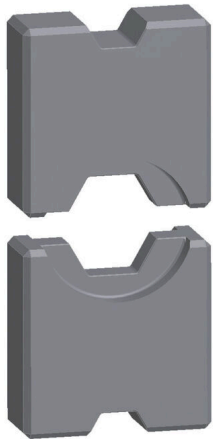


ES EPG 45 HEX 16/35**Weidmüller Interface GmbH & Co. KG**

Klingenbergstraße 26

D-32758 Detmold

Germany

www.weidmueller.com

Crimping tools for cable lugs, connectors and wire-end ferrules with interchangeable inserts

- extremely fast processing thanks to hydraulic support
- large processing range up to 300 mm²
- 270° revolving quick-action crimping head
- automatic pressure limitation and monitoring via pressure sensor
- electronic control and monitoring of the crimping process
- Saving of all crimping cycles and error messages to internal memory
- Reading of all cycles and error messages via USB
- Li-ion rechargeable battery with charge status indicator: 18 V, 2 Ah

General ordering data

Version	35mm ² , Hexagonal crimp
Order No.	1500950000
Type	ES EPG 45 HEX 16/35
GTIN (EAN)	4050118309492
Qty.	1 items

ES EPG 45 HEX 16/35

Weidmüller Interface GmbH & Co. KG
 Klingenbergstraße 26
 D-32758 Detmold
 Germany

www.weidmueller.com

Technical data

Dimensions and weights

Depth	12 mm	Depth (inches)	0.4724 inch
Height	60 mm	Height (inches)	2.3622 inch
Width	30 mm	Width (inches)	1.1811 inch
Net weight	143 g		

Environmental Product Compliance

RoHS Compliance Status	Compliant without exemption
REACH SVHC	No SVHC above 0.1 wt%

Crimp inserts

Identification number	8/12	Crimp cross-section aluminium	-/16+25
Crimp cross-section copper	16/35	Crimping width in mm	12/10

Description of contact

Conductor cross-section, max. AWG	2	Conductor cross-section, min. AWG	6
Crimping range, max.	35 mm ²		

tool data crimping

Crimping type/profile	Hexagonal crimp		
Cable lug cross section	nominal	16 mm ²	
	nominal	35 mm ²	

Classifications

ETIM 8.0	EC001282	ETIM 9.0	EC001282
ETIM 10.0	EC001282	ECLASS 14.0	21-04-90-90
ECLASS 15.0	21-04-90-90		

ES EPG 45 HEX 16/35

Weidmüller Interface GmbH & Co. KG
 Klingenbergstraße 26
 D-32758 Detmold
 Germany

www.weidmueller.com

Accessories

Tools



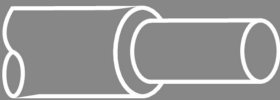
Crimping tools for cable lugs, connectors and wire-end ferrules with interchangeable inserts

- extremely fast processing thanks to hydraulic support
- large processing range up to 300 mm²
- 270° revolving quick-action crimping head
- automatic pressure limitation and monitoring via pressure sensor
- electronic control and monitoring of the crimping process
- Saving of all crimping cycles and error messages to internal memory
- Reading of all cycles and error messages via USB
- Li-ion rechargeable battery with charge status indicator: 18 V, 2 Ah

General ordering data

Type	EPG 45	Version
Order No.	1500830000	Pressing tool, 6mm ² , 150mm ² , Hexagonal crimp, WM crimp, Indent
GTIN (EAN)	4050118309317	crimp, Trapezoidal crimp, Oval crimping
Qty.	1 ST	

16 mm²



16 mm²

The use of insulated connectors guarantees users consistent electrical connection quality in the long term.

- Wide range of insulated and non-insulated cable lugs and connectors
- Tubular cable lugs according to current market standards (Euroseries)
- Compression cable lugs acc. to DIN 46235
- Sheet metal cable lugs acc. to DIN 46234
- Insulated ring cable lugs to DIN 46237
- Insulated pin cable lugs to DIN 46231

General ordering data

Type	KRN-M5/-16	Version
Order No.	1496970000	cable lug, terminal end, 16 mm ² , 16 mm ² - 16 mm ²
GTIN (EAN)	4050118306569	
Qty.	100 ST	
Type	KRN-M6/-16	Version
Order No.	1496980000	cable lug, terminal end, 16 mm ² , 16 mm ² - 16 mm ²
GTIN (EAN)	4050118306583	
Qty.	100 ST	
Type	KRN-M8/-16	Version
Order No.	1496990000	cable lug, terminal end, 16 mm ² , 16 mm ² - 16 mm ²
GTIN (EAN)	4050118306514	
Qty.	100 ST	
Type	KRN-M10/-16	Version
Order No.	1497000000	cable lug, terminal end, 16 mm ² , 16 mm ² - 16 mm ²
GTIN (EAN)	4050118306460	
Qty.	100 ST	

ES EPG 45 HEX 16/35

Weidmüller Interface GmbH & Co. KG
 Klingenbergstraße 26
 D-32758 Detmold
 Germany

www.weidmueller.com

Accessories

Type	KRN-M12/-16	Version	
Order No.	1497010000		cable lug, terminal end, 16 mm ² , 16 mm ² - 16 mm ²
GTIN (EAN)	4050118306538		
Qty.	100 ST		

35 mm²

The use of insulated connectors guarantees users consistent electrical connection quality in the long term.

- Wide range of insulated and non-insulated cable lugs and connectors
- Tubular cable lugs according to current market standards (Euroseries)
- Compression cable lugs acc. to DIN 46235
- Sheet metal cable lugs acc. to DIN 46234
- Insulated ring cable lugs to DIN 46237
- Insulated pin cable lugs to DIN 46231

General ordering data

Type	KRN-M6/-35	Version	
Order No.	1496540000		cable lug, terminal end, 35 mm ² , 35 mm ² - 35 mm ²
GTIN (EAN)	4050118306156		
Qty.	100 ST		
Type	KRN-M8/-35	Version	
Order No.	1496550000		cable lug, terminal end, 35 mm ² , 35 mm ² - 35 mm ²
GTIN (EAN)	4050118305913		
Qty.	100 ST		
Type	KRN-M10/-35	Version	
Order No.	1496570000		cable lug, terminal end, 35 mm ² , 35 mm ² - 35 mm ²
GTIN (EAN)	4050118305920		
Qty.	100 ST		
Type	KRN-M12/-35	Version	
Order No.	1496580000		cable lug, terminal end, 35 mm ² , 35 mm ² - 35 mm ²
GTIN (EAN)	4050118306019		
Qty.	100 ST		
Type	KRN-M6/-35 S	Version	
Order No.	1494790000		cable lug, terminal end, 35 mm ² , 35 mm ² - 35 mm ²
GTIN (EAN)	4050118304466		
Qty.	25 ST		
Type	KRN-M8/-35 S	Version	
Order No.	1494810000		cable lug, terminal end, 35 mm ² , 35 mm ² - 35 mm ²
GTIN (EAN)	4050118304374		
Qty.	25 ST		

ES EPG 45 HEX 16/35

Weidmüller Interface GmbH & Co. KG

Klingenbergstraße 26

D-32758 Detmold

Germany

www.weidmueller.com

Accessories

16 mm²16 mm²

The use of insulated connectors guarantees users consistent electrical connection quality in the long term.

- Wide range of insulated and non-insulated cable lugs and connectors
- Tubular cable lugs according to current market standards (Euroseries)
- Compression cable lugs acc. to DIN 46235
- Sheet metal cable lugs acc. to DIN 46234
- Insulated ring cable lugs to DIN 46237
- Insulated pin cable lugs to DIN 46231

General ordering data

Type	KWN-M5/-16 90	Version	
Order No.	1497080000		cable lug, terminal end, 16 mm ² , 16 mm ² - 16 mm ²
GTIN (EAN)	4050118306392		
Qty.	100 ST		
Type	KWN-M6/16 90	Version	
Order No.	1497090000		cable lug, terminal end, 16 mm ² , 16 mm ² - 16 mm ²
GTIN (EAN)	4050118306743		
Qty.	100 ST		
Type	KWN-M8/-16 90	Version	
Order No.	1497100000		cable lug, terminal end, 16 mm ² , 16 mm ² - 16 mm ²
GTIN (EAN)	4050118306804		
Qty.	100 ST		
Type	KWN-M10/-16 90	Version	
Order No.	1497110000		cable lug, terminal end, 16 mm ² , 16 mm ² - 16 mm ²
GTIN (EAN)	4050118306705		
Qty.	100 ST		
Type	KWN-M12/-16 90	Version	
Order No.	1497120000		cable lug, terminal end, 16 mm ² , 16 mm ² - 16 mm ²
GTIN (EAN)	4050118306736		
Qty.	100 ST		

35 mm²35 mm²

The use of insulated connectors guarantees users consistent electrical connection quality in the long term.

- Wide range of insulated and non-insulated cable lugs and connectors
- Tubular cable lugs according to current market standards (Euroseries)
- Compression cable lugs acc. to DIN 46235
- Sheet metal cable lugs acc. to DIN 46234
- Insulated ring cable lugs to DIN 46237
- Insulated pin cable lugs to DIN 46231

General ordering data

Type	KWN-M6/-35 90	Version	
Order No.	1495910000		cable lug, terminal end, 35 mm ² , 35 mm ² - 35 mm ²
GTIN (EAN)	4050118305418		
Qty.	100 ST		

ES EPG 45 HEX 16/35

Weidmüller Interface GmbH & Co. KG
 Klingenbergstraße 26
 D-32758 Detmold
 Germany

www.weidmueller.com

Accessories

Type	KWN-M8/-35 90	Version
Order No.	1495920000	cable lug, terminal end,35 mm ² ,35 mm ² - 35 mm ²
GTIN (EAN)	4050118305548	
Qty.	100 ST	
Type	KWN-M10/-35 90	Version
Order No.	1495930000	cable lug, terminal end,35 mm ² ,35 mm ² - 35 mm ²
GTIN (EAN)	4050118305173	
Qty.	100 ST	
Type	KWN-M12/-35 90	Version
Order No.	1495940000	cable lug, terminal end,35 mm ² ,35 mm ² - 35 mm ²
GTIN (EAN)	4050118305623	
Qty.	100 ST	
Type	KWN-M14/-35 90	Version
Order No.	1494640000	cable lug, terminal end,35 mm ² ,35 mm ² - 35 mm ²
GTIN (EAN)	4050118304350	
Qty.	100 ST	
Type	KWN-M16/-35 90	Version
Order No.	1494690000	cable lug, terminal end,35 mm ² ,35 mm ² - 35 mm ²
GTIN (EAN)	4050118304268	
Qty.	100 ST	

16 mm²

16 mm²

The use of insulated connectors guarantees users consistent electrical connection quality in the long term.

- Wide range of insulated and non-insulated cable lugs and connectors
- Tubular cable lugs according to current market standards (Euroseries)
- Compression cable lugs acc. to DIN 46235
- Sheet metal cable lugs acc. to DIN 46234
- Insulated ring cable lugs to DIN 46237
- Insulated pin cable lugs to DIN 46231

General ordering data

Type	KWN-M5/-16 45	Version
Order No.	1496850000	cable lug, terminal end,16 mm ² ,16 mm ² - 16 mm ²
GTIN (EAN)	4050118306408	
Qty.	100 ST	
Type	KWN-M6/-16 45	Version
Order No.	1496870000	cable lug, terminal end,16 mm ² ,16 mm ² - 16 mm ²
GTIN (EAN)	4050118306446	
Qty.	100 ST	
Type	KWN-M8/-16 45	Version
Order No.	1496880000	cable lug, terminal end,16 mm ² ,16 mm ² - 16 mm ²
GTIN (EAN)	4050118306422	
Qty.	100 ST	
Type	KWN-M10/-16 45	Version
Order No.	1496890000	cable lug, terminal end,16 mm ² ,16 mm ² - 16 mm ²
GTIN (EAN)	4050118306194	
Qty.	100 ST	

ES EPG 45 HEX 16/35

Weidmüller Interface GmbH & Co. KG

Klingenbergstraße 26

D-32758 Detmold

Germany

www.weidmueller.com

Accessories

35 mm²35 mm²

The use of insulated connectors guarantees users consistent electrical connection quality in the long term.

- Wide range of insulated and non-insulated cable lugs and connectors
- Tubular cable lugs according to current market standards (Euroseries)
- Compression cable lugs acc. to DIN 46235
- Sheet metal cable lugs acc. to DIN 46234
- Insulated ring cable lugs to DIN 46237
- Insulated pin cable lugs to DIN 46231

General ordering data

Type	KWN-M6/-35 45	Version	
Order No.	1496220000		cable lug, terminal end,35 mm ² ,35 mm ² - 35 mm ²
GTIN (EAN)	4050118305852		
Qty.	50 ST		
Type	KWN-M8/-35 45	Version	
Order No.	1496230000		cable lug, terminal end,35 mm ² ,35 mm ² - 35 mm ²
GTIN (EAN)	4050118305968		
Qty.	50 ST		
Type	KWN-M10/-35 45	Version	
Order No.	1496240000		cable lug, terminal end,35 mm ² ,35 mm ² - 35 mm ²
GTIN (EAN)	4050118306217		
Qty.	50 ST		
Type	KWN-M12/-35 45	Version	
Order No.	1496250000		cable lug, terminal end,35 mm ² ,35 mm ² - 35 mm ²
GTIN (EAN)	4050118306002		
Qty.	50 ST		

16 mm²16 mm²

The use of insulated connectors guarantees users consistent electrical connection quality in the long term.

- Wide range of insulated and non-insulated cable lugs and connectors
- Tubular cable lugs according to current market standards (Euroseries)
- Compression cable lugs acc. to DIN 46235
- Sheet metal cable lugs acc. to DIN 46234
- Insulated ring cable lugs to DIN 46237
- Insulated pin cable lugs to DIN 46231

General ordering data

Type	VSTN/-16	Version	
Order No.	1497140000		cable lug, terminal end,16 mm ² ,16 mm ² ,None
GTIN (EAN)	4050118306620		
Qty.	50 ST		

ES EPG 45 HEX 16/35

Weidmüller Interface GmbH & Co. KG

Klingenbergstraße 26
D-32758 Detmold
Germany

www.weidmueller.com

Accessories

35 mm²35 mm²

The use of insulated connectors guarantees users consistent electrical connection quality in the long term.

- Wide range of insulated and non-insulated cable lugs and connectors
- Tubular cable lugs according to current market standards (Euroseries)
- Compression cable lugs acc. to DIN 46235
- Sheet metal cable lugs acc. to DIN 46234
- Insulated ring cable lugs to DIN 46237
- Insulated pin cable lugs to DIN 46231

General ordering data

Type	VSTN/-35	Version	
Order No.	1494740000	Version	cable lug, terminal end,35 mm ² ,35 mm ² ,None
GTIN (EAN)	4050118304428		
Qty.	50 ST		

16 mm²16 mm²

The use of insulated connectors guarantees users consistent electrical connection quality in the long term.

- Wide range of insulated and non-insulated cable lugs and connectors
- Tubular cable lugs according to current market standards (Euroseries)
- Compression cable lugs acc. to DIN 46235
- Sheet metal cable lugs acc. to DIN 46234
- Insulated ring cable lugs to DIN 46237
- Insulated pin cable lugs to DIN 46231

General ordering data

Type	KP-M5/-16	Version	
Order No.	1497920000	Version	cable lug, terminal end,16 mm ²
GTIN (EAN)	4050118307542		
Qty.	100 ST		
Type	KP-M6/-16	Version	
Order No.	1497930000	Version	cable lug, terminal end,16 mm ²
GTIN (EAN)	4050118307290		
Qty.	100 ST		
Type	KP-M8/-16	Version	
Order No.	1497940000	Version	cable lug, terminal end,16 mm ²
GTIN (EAN)	4050118307269		
Qty.	100 ST		
Type	KP-M10/-16	Version	
Order No.	1497950000	Version	cable lug, terminal end,16 mm ²
GTIN (EAN)	4050118307450		
Qty.	100 ST		
Type	KP-M12/-16	Version	
Order No.	1497960000	Version	cable lug, terminal end,16 mm ²
GTIN (EAN)	4050118307436		
Qty.	100 ST		

ES EPG 45 HEX 16/35

Weidmüller Interface GmbH & Co. KG

Klingenbergstraße 26

D-32758 Detmold

Germany

www.weidmueller.com

Accessories

35 mm²35 mm²

The use of insulated connectors guarantees users consistent electrical connection quality in the long term.

- Wide range of insulated and non-insulated cable lugs and connectors
- Tubular cable lugs according to current market standards (Euroseries)
- Compression cable lugs acc. to DIN 46235
- Sheet metal cable lugs acc. to DIN 46234
- Insulated ring cable lugs to DIN 46237
- Insulated pin cable lugs to DIN 46231

General ordering data

Type	KP-M6/-35	Version	
Order No.	1498020000		cable lug, terminal end,35 mm ²
GTIN (EAN)	4050118307313		
Qty.	100 ST		
Type	KP-M8/-35	Version	
Order No.	1498030000		cable lug, terminal end,35 mm ²
GTIN (EAN)	4050118307511		
Qty.	100 ST		
Type	KP-M10/-35	Version	
Order No.	1498040000		cable lug, terminal end,35 mm ²
GTIN (EAN)	4050118307337		
Qty.	100 ST		
Type	KP-M12/35	Version	
Order No.	1498050000		cable lug, terminal end,35 mm ²
GTIN (EAN)	4050118307320		
Qty.	100 ST		
Type	KP-M16/-35	Version	
Order No.	1498060000		cable lug, terminal end,35 mm ²
GTIN (EAN)	4050118307382		
Qty.	100 ST		

16 mm²16 mm²

The use of insulated connectors guarantees users consistent electrical connection quality in the long term.

- Wide range of insulated and non-insulated cable lugs and connectors
- Tubular cable lugs according to current market standards (Euroseries)
- Compression cable lugs acc. to DIN 46235
- Sheet metal cable lugs acc. to DIN 46234
- Insulated ring cable lugs to DIN 46237
- Insulated pin cable lugs to DIN 46231

General ordering data

Type	KWPN-M6/-16 90	Version	
Order No.	1497440000		cable lug, terminal end,16 mm ²
GTIN (EAN)	4050118306644		
Qty.	100 ST		

ES EPG 45 HEX 16/35

Weidmüller Interface GmbH & Co. KG

Klingenbergstraße 26

D-32758 Detmold

Germany

www.weidmueller.com

Accessories

Type	KWPN-M8/-16 90	Version
Order No.	1497450000	cable lug, terminal end,16 mm ²
GTIN (EAN)	4050118306873	
Qty.	100 ST	
Type	KWPN-M10/-16 90	Version
Order No.	1497470000	cable lug, terminal end,16 mm ²
GTIN (EAN)	4050118307016	
Qty.	100 ST	
Type	KWPN-M12/-16 90	Version
Order No.	1497480000	cable lug, terminal end,16 mm ²
GTIN (EAN)	4050118306866	
Qty.	100 ST	

35 mm²

The use of insulated connectors guarantees users consistent electrical connection quality in the long term.

- Wide range of insulated and non-insulated cable lugs and connectors
- Tubular cable lugs according to current market standards (Euroseries)
- Compression cable lugs acc. to DIN 46235
- Sheet metal cable lugs acc. to DIN 46234
- Insulated ring cable lugs to DIN 46237
- Insulated pin cable lugs to DIN 46231

General ordering data

Type	KWPN-M6/-35 90	Version
Order No.	1497540000	cable lug, terminal end,35 mm ²
GTIN (EAN)	4050118306996	
Qty.	100 ST	
Type	KWPN-M8/-35 90	Version
Order No.	1497550000	cable lug, terminal end,35 mm ²
GTIN (EAN)	4050118307146	
Qty.	100 ST	
Type	KWPN-M10/-35 90	Version
Order No.	1497570000	cable lug, terminal end,35 mm ²
GTIN (EAN)	4050118307153	
Qty.	100 ST	
Type	KWPN-M12/-35 90	Version
Order No.	1497580000	cable lug, terminal end,35 mm ²
GTIN (EAN)	4050118306682	
Qty.	100 ST	

ES EPG 45 HEX 16/35

Weidmüller Interface GmbH & Co. KG

Klingenbergstraße 26

D-32758 Detmold

Germany

www.weidmueller.com

Accessories

16 mm²16 mm²

The use of insulated connectors guarantees users consistent electrical connection quality in the long term.

- Wide range of insulated and non-insulated cable lugs and connectors
- Tubular cable lugs according to current market standards (Euroseries)
- Compression cable lugs acc. to DIN 46235
- Sheet metal cable lugs acc. to DIN 46234
- Insulated ring cable lugs to DIN 46237
- Insulated pin cable lugs to DIN 46231

General ordering data

Type	VPN/-16	Version	
Order No.	1498630000	Version	cable lug, terminal end, 16 mm ² , 16 mm ² , None
GTIN (EAN)	4050118307856		
Qty.	100 ST		

35 mm²35 mm²

The use of insulated connectors guarantees users consistent electrical connection quality in the long term.

- Wide range of insulated and non-insulated cable lugs and connectors
- Tubular cable lugs according to current market standards (Euroseries)
- Compression cable lugs acc. to DIN 46235
- Sheet metal cable lugs acc. to DIN 46234
- Insulated ring cable lugs to DIN 46237
- Insulated pin cable lugs to DIN 46231

General ordering data

Type	VPN/-35	Version	
Order No.	1498650000	Version	cable lug, terminal end, 35 mm ² , 35 mm ² , None
GTIN (EAN)	4050118308143		
Qty.	100 ST		

16 mm²16 mm²

The use of insulated connectors guarantees users consistent electrical connection quality in the long term.

- Wide range of insulated and non-insulated cable lugs and connectors
- Tubular cable lugs according to current market standards (Euroseries)
- Compression cable lugs acc. to DIN 46235
- Sheet metal cable lugs acc. to DIN 46234
- Insulated ring cable lugs to DIN 46237
- Insulated pin cable lugs to DIN 46231

General ordering data

Type	KQN-M5/-16	Version	
Order No.	1494070000	Version	cable lug, terminal end, 16 mm ²
GTIN (EAN)	4050118303650		
Qty.	100 ST		

ES EPG 45 HEX 16/35

Weidmüller Interface GmbH & Co. KG
 Klingenbergstraße 26
 D-32758 Detmold
 Germany

www.weidmueller.com

Accessories

Type	KQN-M6/-16	Version
Order No.	1494080000	cable lug, terminal end,16 mm ²
GTIN (EAN)	4050118303636	
Qty.	100 ST	
Type	KQN-M8/-16	Version
Order No.	1494090000	cable lug, terminal end,16 mm ²
GTIN (EAN)	4050118303742	
Qty.	100 ST	
Type	KQN-M10/-16	Version
Order No.	1494100000	cable lug, terminal end,16 mm ²
GTIN (EAN)	4050118303728	
Qty.	100 ST	
Type	KQN-M12/-16	Version
Order No.	1494110000	cable lug, terminal end,16 mm ²
GTIN (EAN)	4050118303773	
Qty.	100 ST	

35 mm²



The use of insulated connectors guarantees users consistent electrical connection quality in the long term.

- Wide range of insulated and non-insulated cable lugs and connectors
- Tubular cable lugs according to current market standards (Euroseries)
- Compression cable lugs acc. to DIN 46235
- Sheet metal cable lugs acc. to DIN 46234
- Insulated ring cable lugs to DIN 46237
- Insulated pin cable lugs to DIN 46231

General ordering data

Type	KQN-M6/-35	Version
Order No.	1494170000	cable lug, terminal end,35 mm ²
GTIN (EAN)	4050118304015	
Qty.	50 ST	
Type	KQN-M8/-35	Version
Order No.	1494180000	cable lug, terminal end,35 mm ²
GTIN (EAN)	4050118304022	
Qty.	50 ST	
Type	KQN-M10/-35	Version
Order No.	1494190000	cable lug, terminal end,35 mm ²
GTIN (EAN)	4050118303780	
Qty.	50 ST	
Type	KQN-M12/-35	Version
Order No.	1493130000	cable lug, terminal end,35 mm ²
GTIN (EAN)	4050118302837	
Qty.	50 ST	
Type	KQN-M16/-35	Version
Order No.	1493140000	cable lug, terminal end,35 mm ²
GTIN (EAN)	4050118302851	
Qty.	50 ST	

ES EPG 45 HEX 16/35

Weidmüller Interface GmbH & Co. KG

Klingenbergstraße 26

D-32758 Detmold

Germany

www.weidmueller.com

Accessories

Type	KQN-M20/-35	Version	
Order No.	1493520000		cable lug, terminal end,35 mm ²
GTIN (EAN)	4050118303124		
Qty.	50 ST		

16 mm²

The use of insulated connectors guarantees users consistent electrical connection quality in the long term.

- Wide range of insulated and non-insulated cable lugs and connectors
- Tubular cable lugs according to current market standards (Euroseries)
- Compression cable lugs acc. to DIN 46235
- Sheet metal cable lugs acc. to DIN 46234
- Insulated ring cable lugs to DIN 46237
- Insulated pin cable lugs to DIN 46231

General ordering data

Type	KQNG-M6/-16	Version	
Order No.	1492700000		cable lug, terminal end,16 mm ² ,16 mm ²
GTIN (EAN)	4050118302493		
Qty.	50 ST		
Type	KQNG-M8/-16	Version	
Order No.	1492710000		cable lug, terminal end,16 mm ² ,16 mm ²
GTIN (EAN)	4050118302677		
Qty.	50 ST		
Type	KSN/-16	Version	
Order No.	1492790000		cable lug, terminal end,16 mm ² ,16 mm ²
GTIN (EAN)	4050118302745		
Qty.	100 ST		

35 mm²

The use of insulated connectors guarantees users consistent electrical connection quality in the long term.

- Wide range of insulated and non-insulated cable lugs and connectors
- Tubular cable lugs according to current market standards (Euroseries)
- Compression cable lugs acc. to DIN 46235
- Sheet metal cable lugs acc. to DIN 46234
- Insulated ring cable lugs to DIN 46237
- Insulated pin cable lugs to DIN 46231

General ordering data

Type	KSN/-35	Version	
Order No.	1492810000		cable lug, terminal end,35 mm ² ,35 mm ²
GTIN (EAN)	4050118302639		
Qty.	50 ST		

ES EPG 45 HEX 16/35

Weidmüller Interface GmbH & Co. KG
 Klingenbergstraße 26
 D-32758 Detmold
 Germany

www.weidmueller.com

Accessories

16 mm²



The use of insulated connectors guarantees users consistent electrical connection quality in the long term.

- Wide range of insulated and non-insulated cable lugs and connectors
- Tubular cable lugs according to current market standards (Euroseries)
- Compression cable lugs acc. to DIN 46235
- Sheet metal cable lugs acc. to DIN 46234
- Insulated ring cable lugs to DIN 46237
- Insulated pin cable lugs to DIN 46231

General ordering data

Type	VPLN/-16	Version	
Order No.	149290000	cable lug, terminal end, 16 mm ² , 16 mm ² , None	
GTIN (EAN)	4050118302714		
Qty.	100 ST		

35 mm²



The use of insulated connectors guarantees users consistent electrical connection quality in the long term.

- Wide range of insulated and non-insulated cable lugs and connectors
- Tubular cable lugs according to current market standards (Euroseries)
- Compression cable lugs acc. to DIN 46235
- Sheet metal cable lugs acc. to DIN 46234
- Insulated ring cable lugs to DIN 46237
- Insulated pin cable lugs to DIN 46231

General ordering data

Type	VPLN/-35	Version	
Order No.	149292000	cable lug, terminal end, 35 mm ² , 35 mm ² , None	
GTIN (EAN)	4050118302752		
Qty.	100 ST		

16 mm²



The use of insulated connectors guarantees users consistent electrical connection quality in the long term.

- Wide range of insulated and non-insulated cable lugs and connectors
- Tubular cable lugs according to current market standards (Euroseries)
- Compression cable lugs acc. to DIN 46235
- Sheet metal cable lugs acc. to DIN 46234
- Insulated ring cable lugs to DIN 46237
- Insulated pin cable lugs to DIN 46231

General ordering data

Type	VSTN/16	Version	
Order No.	149304000	cable lug, terminal end, 16 mm ² , 16 mm ² , None	
GTIN (EAN)	4050118302981		
Qty.	100 ST		

Accessories**35 mm²****35 mm²**

The use of insulated connectors guarantees users consistent electrical connection quality in the long term.

- Wide range of insulated and non-insulated cable lugs and connectors
- Tubular cable lugs according to current market standards (Euroseries)
- Compression cable lugs acc. to DIN 46235
- Sheet metal cable lugs acc. to DIN 46234
- Insulated ring cable lugs to DIN 46237
- Insulated pin cable lugs to DIN 46231

General ordering data

Type	VSTN/35	Version	
Order No.	1493060000	Version	cable lug, terminal end,35 mm ² ,35 mm ² ,None
GTIN (EAN)	4050118302943		
Qty.	100 ST		