

SFX-M 17/60-5 AL

Weidmüller Interface GmbH & Co. KG

Klingenbergstraße 26

D-32758 Detmold

Germany

www.weidmueller.com



MetalliCards are available in aluminium or stainless steel to meet a wide range of labelling requirements. The chrome-coated aluminium tags are the inexpensive alternative for a variety of applications, and in particular, they prove themselves through the deep contrasts of their multi-colour print. In the technologically demanding chemical and process industries, you are on the safe side when using the stainless steel MetalliCard with its outstanding resistance characteristics. Its formats cover the needs of the entire system-identification spectrum. Whether small equipment or type plates, they ensure high-quality marking processes. The MetalliCard also offers optimum installation characteristics. MetalliCards can be used universally thanks to various fixation options: bonding, riveting, with tag holders or rails, or in combination with stainless steel cable ties. A special punching in the SFX-M allows the use of steel cable ties. For custom printing: Please send us a file of our labeling software M-Print PRO or M-Print PRO Online (without installation) for your labeling specifications.

General ordering data

Version	MetalliCard, Conductor and cable markers, 7 - 40 mm, 60 x 17 mm, silver
Order No.	1500250000
Type	SFX-M 17/60-5 AL
GTIN (EAN)	4050118308778
Qty.	50 items

SFX-M 17/60-5 AL

Weidmüller Interface GmbH & Co. KG
Klingenbergstraße 26
D-32758 Detmold
Germany

www.weidmueller.com

Technical data

Approvals

ROHS	Conform
------	---------

Dimensions and weights

Depth	0.8 mm	Depth (inches)	0.0315 inch
Height	60 mm	Height (inches)	2.3622 inch
Width	17 mm	Width (inches)	0.6693 inch
Net weight	1.3 g		

Temperatures

Operating temperature range	-55...130 °C
-----------------------------	--------------

Environmental Product Compliance

RoHS Compliance Status	Compliant without exemption
REACH SVHC	No SVHC above 0.1 wt%

General data

Number per sheet	50	
Type of printing	neutral	
Version	halogen-free	
Width	17 mm	
Operating temperature range, max.	130 °C	
Operating temperature range, min.	-55 °C	
Colour	silver	
Basic material	Anodized aluminium	
Printed characters	without	
Number of markers per packaging unit	Form of supply	MetalliCard
Size of labelling field	17.2 x 40 mm	
Recommended industries	Process, Energy	
compatible printer		
Number of markers per combination	1 MetalliCard = Conductor and cable markers	
Operating temperature range	-55...130 °C	

Conductor and cable markers

Conductor cross-section, max.	500 mm ²	Conductor cross-section, min.	16 mm ²
Conductor O.D., max.	40 mm	Conductor O.D., min.	7 mm
Cable tie passage	Flat	Conductor O.D.	7 - 40 mm
Suitable cable tie	Plastic	Cross-section for connected wire	16 - 500 mm ²

Classifications

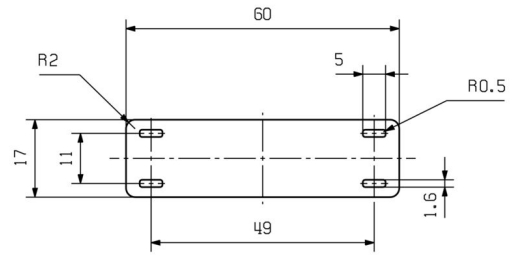
ETIM 8.0	EC001530	ETIM 9.0	EC001530
ETIM 10.0	EC001530	ECLASS 14.0	27-28-11-02
ECLASS 15.0	27-28-11-02		

SFX-M 17/60-5 AL

Weidmüller Interface GmbH & Co. KG
Klingenbergstraße 26
D-32758 Detmold
Germany

Drawings

www.weidmueller.com



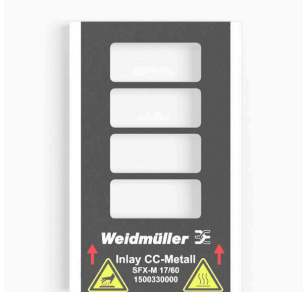
SFX-M 17/60-5 AL

Weidmüller Interface GmbH & Co. KG
 Klingenbergstraße 26
 D-32758 Detmold
 Germany

www.weidmueller.com

Accessories

Inlay



MetalliCards are available in aluminium or stainless steel to meet a wide range of labelling requirements. The chrome-coated aluminium tags are the inexpensive alternative for a variety of applications, and in particular, they prove themselves through the deep contrasts of their multi-colour print. In the technologically demanding chemical and process industries, you are on the safe side when using the stainless steel MetalliCard with its outstanding resistance characteristics. Its formats cover the needs of the entire system-identification spectrum. Whether small equipment or type plates, they ensure high-quality marking processes. The MetalliCard also offers optimum installation characteristics. MetalliCards can be used universally thanks to various fixation options: bonding, riveting, with tag holders or rails, or in combination with stainless steel cable ties. A special punching in the SFX-M allows the use of steel cable ties. For custom printing: Please send us a file of our labeling software M-Print PRO or M-Print PRO Online (without installation) for your labeling specifications.

General ordering data

Type	INLAY SFX-M 17/60	Version
Order No.	1500330000	
GTIN (EAN)	4050118308952	
Qty.	1 ST	

Complementary products



General ordering data

Type	PRIMER CC-M	Version
Order No.	2068020000	
GTIN (EAN)	4050118416534	
Qty.	100 ST	