

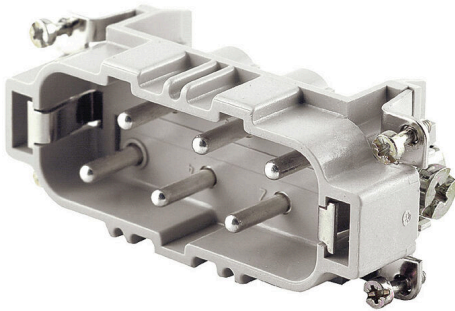
HDC HSB 6 MS 7 - 12**Weidmüller Interface GmbH & Co. KG**

Klingenbergstraße 26

D-32758 Detmold

Germany

www.weidmueller.com



The HSB series enables you to carry 35A per contact simultaneously. Assembly with screw connections, for secure and reliable connections.

The wire connection level is designed for screw connections. All screw connection elements are equipped with wire protection.

General ordering data

| | |
|------------|---|
| Version | HDC insert, Male, 400 V, 35 A, Number of poles: 6, Screw connection, Installation size: 6 |
| Order No. | 1498800000 |
| Type | HDC HSB 6 MS 7 - 12 |
| GTIN (EAN) | 4008 19007 1875 |
| Qty. | 1 items |

HDC HSB 6 MS 7 - 12

Weidmüller Interface GmbH & Co. KG
 Klingenbergstraße 26
 D-32758 Detmold
 Germany

www.weidmueller.com

Technical data

Approvals

Approvals



| | |
|-------------------------|----------------------------|
| ROHS | Conform |
| UL File Number Search | UL Website |
| Certificate No. (cURus) | E92202 |

Dimensions and weights

| | | | |
|------------|---------|-----------------|-------------|
| Depth | 84.5 mm | Depth (inches) | 3.3268 inch |
| Height | 34 mm | Height (inches) | 1.3386 inch |
| Width | 34 mm | Width (inches) | 1.3386 inch |
| Net weight | 71.28 g | | |

Temperatures

| | |
|-------------------|-------------------|
| Limit temperature | -40 °C ... 125 °C |
|-------------------|-------------------|

Environmental Product Compliance

| | |
|--------------------------------------|--|
| RoHS Compliance Status | Compliant with exemption |
| RoHS Exemption (if applicable/known) | 6c |
| REACH SVHC | Lead 7439-92-1, Potassium perfluorobutane sulfonate 29420-49-3 |
| SCIP | e98b2b24-ba23-41bf-8d19-0dda3647412f |

| | | |
|---------------------|--------------------------|---------------------------|
| Chemical resistance | Substance | Acetone |
| | Chemical resistance | Resistant |
| | Substance | Ammonia, watery |
| | Chemical resistance | Conditionally resistant |
| | Substance | Petrol |
| | Chemical resistance | Resistant |
| | Substance | Benzene |
| | Chemical resistance | Resistant |
| | Substance | Diesel oil |
| | Chemical resistance | Conditionally resistant |
| | Substance | Acetic acid, concentrated |
| | Chemical resistance | Resistant |
| | Substance | Potassium hydroxide |
| | Chemical resistance | Conditionally resistant |
| | Substance | Methanol |
| | Chemical resistance | Conditionally resistant |
| | Substance | Motor oil |
| | Chemical resistance | Conditionally resistant |
| | Substance | Lye, diluted |
| | Chemical resistance | Resistant |
| Substance | Hydrochlorofluorocarbons | |
| Chemical resistance | Conditionally resistant | |
| Substance | Outdoor use | |
| Chemical resistance | Conditionally resistant | |

Dimensions

| | | | |
|----------------|-------|-------------------|---------|
| Width | 34 mm | Total length base | 84.5 mm |
| Height of plug | 34 mm | | |

HDC HSB 6 MS 7 - 12

Weidmüller Interface GmbH & Co. KG

Klingenbergstraße 26

D-32758 Detmold

Germany

www.weidmueller.com

Technical data

General data

| | | |
|---------------------------------------|---|--------|
| Number of poles | 6 | |
| Plugging cycles, silver | ≥ 500 | |
| Plugging cycles, gold | ≥ 500 | |
| Type of connection | Screw connection | |
| Installation size | 6 | |
| UL 94 flammability rating | V-0 | |
| Volume resistance | ≤2 mΩ | |
| Colour | beige | |
| Insulation resistance | 1010 Ω | |
| Insulating material | PC glass-fibre reinforced (UL-listed and railway-certified) | |
| Insulating material group | IIIa | |
| Conductor cross-section | 6 mm ² | |
| Tightening torque, max. PE connection | 2.5 Nm | |
| Surface finish | Silver passivated | |
| Max. torque for main contact | 1.5 Nm | |
| Type | Male | |
| Pollution severity | 3 | |
| Tightening torque, min. PE connection | 2 Nm | |
| Basic material | Copper alloy | |
| Min. torque for main contact | 1.2 Nm | |
| Series | HSB | |
| Rated voltage (DIN EN 61984) | 400 V | |
| Rated voltage according to UL/CSA | 600 V AC/DC | |
| Rated impulse voltage (DIN EN 61984) | 6 kV | |
| Rated current (DIN EN 61984) | 35 A | |
| Rated current (UR) | Wire connection cross section AWG | AWG 10 |
| | Rated current | 35 A |
| | Wire connection cross section AWG | AWG 12 |
| | Rated current | 8 A |
| | Wire connection cross section AWG | AWG 14 |
| | Rated current | 8 A |
| | Wire connection cross section AWG | AWG 16 |
| | Rated current | 8 A |
| | Wire connection cross section AWG | AWG 18 |
| | Rated current | 8 A |
| Rated current (cUR) | Wire connection cross section AWG | AWG 20 |
| | Rated current | 8 A |
| | Wire connection cross section AWG | AWG 10 |
| | Rated current | 8 A |
| | Wire connection cross section AWG | AWG 12 |
| | Rated current | 8 A |
| | Wire connection cross section AWG | AWG 14 |
| | Rated current | 8 A |
| | Wire connection cross section AWG | AWG 16 |
| | Rated current | 8 A |
| Wire connection cross section AWG | AWG 18 | |
| Rated current | 8 A | |
| Wire connection cross section AWG | AWG 20 | |
| Rated current | 8 A | |
| Free from halogens | true | |
| Low smoke acc. DIN EN 45545-2 | Yes | |
| BG | 6 | |

HDC HSB 6 MS 7 - 12

Weidmüller Interface GmbH & Co. KG
 Klingenbergstraße 26
 D-32758 Detmold
 Germany

www.weidmueller.com

Technical data

Connection data PE

| | | | |
|---------------------------------------|-------------------|---------------------------------------|---------|
| Connection type PE | Screw connection | Blade size, slotted (PE connection) | 1 x 5.5 |
| Stripping length PE connection | 10 mm | Tightening torque, max. PE connection | 2.5 Nm |
| Tightening torque, min. PE connection | 2 Nm | Fixing screw | M 5 |
| Rated cross-section | 6 mm ² | Wire cross section, AWG (PE), min. | AWG 20 |
| Wire cross section, AWG (PE), max. | AWG 10 | | |

Version

| | | | |
|---|---------------------|---|-------------------|
| Blade size, slotted (screw connection) | SD 0.8 x 4.0 | Wire connection cross section AWG, max. | AWG 10 |
| Stripping length, rated connection | 11 mm | Type of connection | Screw connection |
| Installation size | 6 | Volume resistance | ≤2 mΩ |
| Clamping screw | M 4 | Blade size | size PZ1 |
| Wire connection cross section AWG, min. | AWG 20 | Wire cross-section, solid, max. | 6 mm ² |
| Wire cross-section, solid, min. | 0.5 mm ² | Wire connection cross-section, finely stranded with wire-end ferrules DIN 46228/4, max. | 6 mm ² |
| Wire connection cross-section, finely stranded with wire-end ferrules DIN 46228/4, min. | 0.5 mm ² | Wire connection cross section, finely stranded, max. | 6 mm ² |
| Wire connection cross section, finely stranded, min. | 0.5 mm ² | Conductor cross-section, max. | 6 mm ² |
| Conductor cross-section, min. | 0.5 mm ² | Surface finish | Silver passivated |
| Max. torque for main contact | 1.5 Nm | Basic material | Copper alloy |
| Min. torque for main contact | 1.2 Nm | BG | 6 |

Classifications

| | | | |
|-------------|-------------|-------------|-------------|
| ETIM 8.0 | EC000438 | ETIM 9.0 | EC000438 |
| ETIM 10.0 | EC000438 | ECLASS 14.0 | 27-44-02-05 |
| ECLASS 15.0 | 27-44-02-05 | | |

HDC HSB 6 MS 7 - 12

Weidmüller Interface GmbH & Co. KG
Klingenbergstraße 26
D-32758 Detmold
Germany

Drawings

www.weidmueller.com

