

**KP-M10/-185****Weidmüller Interface GmbH & Co. KG**Klingenbergstraße 26  
D-32758 Detmold  
Germany

www.weidmueller.com



The use of insulated connectors guarantees users consistent electrical connection quality in the long term.

- Wide range of insulated and non-insulated cable lugs and connectors
- Tubular cable lugs according to current market standards (Euroseries)
- Compression cable lugs acc. to DIN 46235
- Sheet metal cable lugs acc. to DIN 46234
- Insulated ring cable lugs to DIN 46237
- Insulated pin cable lugs to DIN 46231

**General ordering data**

Version	cable lug, terminal end, 185 mm <sup>2</sup>
Order No.	<a href="#">1498350000</a>
Type	KP-M10/-185
GTIN (EAN)	4050118307665
Qty.	25 items

## Technical data

### Approvals

ROHS	Conform
------	---------

### Dimensions and weights

Net weight	185 g
------------	-------

### Environmental Product Compliance

RoHS Compliance Status	Compliant without exemption
REACH SVHC	No SVHC above 0.1 wt%

### Technical data

Version	DIN series 46235, standard
---------	-------------------------------

### Connectors

Conductor cross-section	185 mm <sup>2</sup>	Insulation	not available
Hole	M10	Identification colour	None
Inside diameter of shaft (d1)	19 mm	Outside diameter of shaft (d3)	25.5 mm
Shaft length (a)	40 mm	Connection length (l)	83 mm
Inside diameter of flange (d2)	10.5 mm	Flange width (b)	37 mm
Identification number Cu	25 K		

### Classifications

ETIM 8.0	EC001050	ETIM 9.0	EC001050
ETIM 10.0	EC001050	ECLASS 14.0	27-40-02-03
ECLASS 15.0	27-40-02-03		

Drawings



**KP-M10/-185**

**Weidmüller Interface GmbH & Co. KG**  
 Klingenbergstraße 26  
 D-32758 Detmold  
 Germany

www.weidmueller.com

**Accessories**

**Tools**



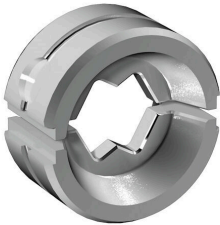
Crimping tools for cable lugs, connectors and wire-end ferrules with interchangeable inserts

- extremely fast processing thanks to hydraulic support
- large processing range up to 300 mm<sup>2</sup>
- 270° revolving quick-action crimping head
- automatic pressure limitation and monitoring via pressure sensor
- electronic control and monitoring of the crimping process
- Saving of all crimping cycles and error messages to internal memory
- Reading of all cycles and error messages via USB
- Li-ion rechargeable battery with charge status indicator: 18 V, 2 Ah

**General ordering data**

Type	EPG 60	Version
Order No.	<a href="#">2453810000</a>	Pressing tools, Tools, Pressing tool, 6mm <sup>2</sup> , 300mm <sup>2</sup> , Hexagonal
GTIN (EAN)	4050118468434	crimp, WM crimp, Indent crimp, Trapezoidal crimp, Oval crimping
Qty.	1 ST	

**... for tubular cable lugs**



Crimping tools for cable lugs, connectors and wire-end ferrules with interchangeable inserts

- extremely fast processing thanks to hydraulic support
- large processing range up to 300 mm<sup>2</sup>
- 270° revolving quick-action crimping head
- automatic pressure limitation and monitoring via pressure sensor
- electronic control and monitoring of the crimping process
- Saving of all crimping cycles and error messages to internal memory
- Reading of all cycles and error messages via USB
- Li-ion rechargeable battery with charge status indicator: 18 V, 2 Ah

**General ordering data**

Type	ES EPG/HPG 60 WM 185	Version
Order No.	<a href="#">2469630000</a>	Crimping tool insert, 185mm <sup>2</sup> , WM crimp
GTIN (EAN)	4050118484038	
Qty.	1 ST	

**KP-M10/-185**

**Weidmüller Interface GmbH & Co. KG**  
 Klingenbergstraße 26  
 D-32758 Detmold  
 Germany

www.weidmueller.com

**Accessories**

**... for compression cable lugs**



- Crimping tools for cable lugs, connectors and wire-end ferrules with interchangeable inserts
- extremely fast processing thanks to hydraulic support
  - large processing range up to 300 mm<sup>2</sup>
  - 270° revolving quick-action crimping head
  - automatic pressure limitation and monitoring via pressure sensor
  - electronic control and monitoring of the crimping process
  - Saving of all crimping cycles and error messages to internal memory
  - Reading of all cycles and error messages via USB
  - Li-ion rechargeable battery with charge status indicator: 18 V, 2 Ah

**General ordering data**

Type	ES EPG/HPG 60 HEX 185	Version	
Order No.	<a href="#">2505250000</a>	Version	Crimping tool insert, 185mm <sup>2</sup> , Hexagonal crimp
GTIN (EAN)	4050118519617		
Qty.	1 ST		

**Tools**



- Crimping tools for cable lugs, connectors and wire-end ferrules with interchangeable inserts
- extremely fast processing thanks to hydraulic support
  - large processing range up to 400 mm<sup>2</sup>
  - 360° revolving quick action crimping head
  - automatic pressure limitation and monitoring via pressure sensor
  - Additional features for APG series:
  - electronic control and monitoring of the crimping process
  - Saving of all crimping cycles and error messages to internal memory
  - Reading of all cycles and error messages via USB

**General ordering data**

Type	HPG 60	Version	
Order No.	<a href="#">2453820000</a>	Version	6mm <sup>2</sup> , 300mm <sup>2</sup> , Hexagonal crimp, WM crimp, Indent crimp,
GTIN (EAN)	4050118468427	Version	Trapezoidal crimp, Oval crimping
Qty.	1 ST		

## KP-M10/-185

**Weidmüller Interface GmbH & Co. KG**

Klingenbergstraße 26  
D-32758 Detmold  
Germany

www.weidmueller.com

## Accessories

### ... for tubular cable lugs (acc. to EN 13600)



Crimping tools for cable lugs, connectors and wire-end ferrules with interchangeable inserts

- extremely fast processing thanks to hydraulic support
- large processing range up to 400 mm<sup>2</sup>
- 360° revolving quick action crimping head
- automatic pressure limitation and monitoring via pressure sensor
- Additional features for APG series:
- electronic control and monitoring of the crimping process
- Saving of all crimping cycles and error messages to internal memory
- Reading of all cycles and error messages via USB

#### General ordering data

Type	ES APG 80 WM 185	Version	
Order No.	<a href="#">1502570000</a>	Version	185mm <sup>2</sup> , WM crimp
GTIN (EAN)	4050118310528		
Qty.	1 ST		

### ... for compression cable lugs (acc. to DIN 46235)



Crimping tools for cable lugs, connectors and wire-end ferrules with interchangeable inserts

- extremely fast processing thanks to hydraulic support
- large processing range up to 400 mm<sup>2</sup>
- 360° revolving quick action crimping head
- automatic pressure limitation and monitoring via pressure sensor
- Additional features for APG series:
- electronic control and monitoring of the crimping process
- Saving of all crimping cycles and error messages to internal memory
- Reading of all cycles and error messages via USB

#### General ordering data

Type	ES APG 80 HEX 185	Version	
Order No.	<a href="#">1502730000</a>	Version	185mm <sup>2</sup> , Hexagonal crimp
GTIN (EAN)	4050118310726		
Qty.	1 ST		