

**KRN-M10/-300****Weidmüller Interface GmbH & Co. KG**

Klingenbergstraße 26

D-32758 Detmold

Germany

www.weidmueller.com



The use of insulated connectors guarantees users consistent electrical connection quality in the long term.

- Wide range of insulated and non-insulated cable lugs and connectors
- Tubular cable lugs according to current market standards (Euroseries)
- Compression cable lugs acc. to DIN 46235
- Sheet metal cable lugs acc. to DIN 46234
- Insulated ring cable lugs to DIN 46237
- Insulated pin cable lugs to DIN 46231

**General ordering data**

Version	cable lug, terminal end,300 mm <sup>2</sup> ,300 mm <sup>2</sup> - 300 mm <sup>2</sup>
Order No.	<a href="#">1495530000</a>
Type	KRN-M10/-300
GTIN (EAN)	4050118305210
Qty.	20 items

## KRN-M10/-300

**Weidmüller Interface GmbH & Co. KG**  
 Klingenbergstraße 26  
 D-32758 Detmold  
 Germany

[www.weidmueller.com](http://www.weidmueller.com)

## Technical data

### Approvals

ROHS	Conform
------	---------

### Dimensions and weights

Net weight	207.69 g
------------	----------

### Environmental Product Compliance

RoHS Compliance Status	Compliant without exemption
REACH SVHC	No SVHC above 0.1 wt%

### Technical data

Version	Euro series, standard
---------	-----------------------

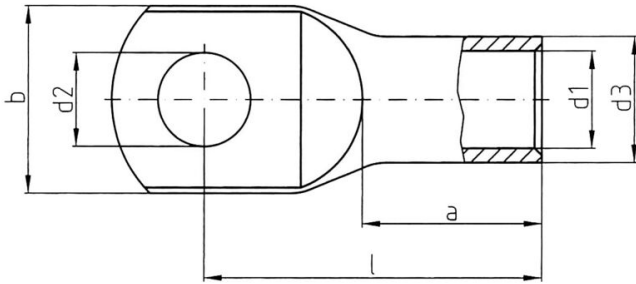
### Connectors

Conductor cross-section, max.	300 mm <sup>2</sup>	Conductor cross-section, min.	300 mm <sup>2</sup>
Conductor cross-section	300 mm <sup>2</sup>	Insulation	not available
Hole	M10	Identification colour	None
Inside diameter of shaft (d1)	24 mm	Outside diameter of shaft (d3)	30 mm
Shaft length (a)	42 mm	Connection length (l)	79.5 mm
Inside diameter of flange (d2)	10.5 mm	Flange width (b)	44 mm

### Classifications

ETIM 8.0	EC001051	ETIM 9.0	EC001051
ETIM 10.0	EC001051	ECLASS 14.0	27-40-02-05
ECLASS 15.0	27-40-02-05		

Drawings



## KRN-M10/-300

Weidmüller Interface GmbH &amp; Co. KG

Klingenbergstraße 26

D-32758 Detmold

Germany

www.weidmueller.com

## Accessories

## ... for tubular cable lugs (acc. to EN 13600)



Crimping tools for cable lugs, connectors and wire-end ferrules with interchangeable inserts

- extremely fast processing thanks to hydraulic support
- large processing range up to 400 mm<sup>2</sup>
- 360° revolving quick action crimping head
- automatic pressure limitation and monitoring via pressure sensor
- Additional features for APG series:
- electronic control and monitoring of the crimping process
- Saving of all crimping cycles and error messages to internal memory
- Reading of all cycles and error messages via USB

## General ordering data

Type	ES APG 80 WM 300	Version	
Order No.	<a href="#">1502590000</a>	300mm <sup>2</sup> , WM crimp	
GTIN (EAN)	4050118310511		
Qty.	1 ST		

## ... for compression cable lugs (acc. to DIN 46235)



Crimping tools for cable lugs, connectors and wire-end ferrules with interchangeable inserts

- extremely fast processing thanks to hydraulic support
- large processing range up to 400 mm<sup>2</sup>
- 360° revolving quick action crimping head
- automatic pressure limitation and monitoring via pressure sensor
- Additional features for APG series:
- electronic control and monitoring of the crimping process
- Saving of all crimping cycles and error messages to internal memory
- Reading of all cycles and error messages via USB

## General ordering data

Type	ES APG 80 HEX 300	Version	
Order No.	<a href="#">1502750000</a>	300mm <sup>2</sup> , Hexagonal crimp	
GTIN (EAN)	4050118310962		
Qty.	1 ST		