

**KWN-M16/-240 45****Weidmüller Interface GmbH & Co. KG**

Klingenbergstraße 26

D-32758 Detmold

Germany

www.weidmueller.com



The use of insulated connectors guarantees users consistent electrical connection quality in the long term.

- Wide range of insulated and non-insulated cable lugs and connectors
- Tubular cable lugs according to current market standards (Euroseries)
- Compression cable lugs acc. to DIN 46235
- Sheet metal cable lugs acc. to DIN 46234
- Insulated ring cable lugs to DIN 46237
- Insulated pin cable lugs to DIN 46231

**General ordering data**

Version	cable lug, terminal end, 240 mm <sup>2</sup> , 240 mm <sup>2</sup> - 240 mm <sup>2</sup>
Order No.	<a href="#">1495410000</a>
Type	KWN-M16/-240 45
GTIN (EAN)	4050118305203
Qty.	15 items

## KWN-M16/-240 45

**Weidmüller Interface GmbH & Co. KG**  
 Klingenbergstraße 26  
 D-32758 Detmold  
 Germany

[www.weidmueller.com](http://www.weidmueller.com)

## Technical data

## Approvals

ROHS	Conform
------	---------

## Dimensions and weights

Net weight	159.13 g
------------	----------

## Environmental Product Compliance

RoHS Compliance Status	Compliant without exemption
REACH SVHC	No SVHC above 0.1 wt%

## Technical data

Version	Euro series, 45°
---------	------------------

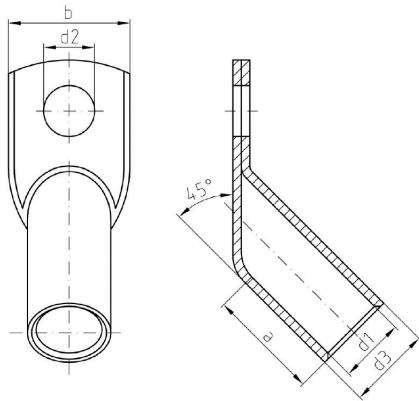
## Connectors

Conductor cross-section, max.	240 mm <sup>2</sup>	Conductor cross-section, min.	240 mm <sup>2</sup>
Conductor cross-section	240 mm <sup>2</sup>	Insulation	not available
Hole	M 16	Identification colour	None
Inside diameter of shaft (d1)	21 mm	Outside diameter of shaft (d3)	26 mm
Shaft length (a)	34 mm	Inside diameter of flange (d2)	17 mm
Flange width (b)	38 mm		

## Classifications

ETIM 8.0	EC001051	ETIM 9.0	EC001051
ETIM 10.0	EC001051	ECLASS 14.0	27-40-02-05
ECLASS 15.0	27-40-02-05		

## Drawings



## KWN-M16/-240 45

Weidmüller Interface GmbH &amp; Co. KG

Klingenbergstraße 26

D-32758 Detmold

Germany

www.weidmueller.com

## Accessories

## Tools



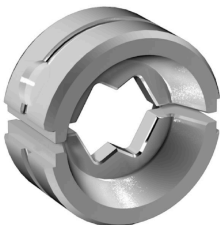
Crimping tools for cable lugs, connectors and wire-end ferrules with interchangeable inserts

- extremely fast processing thanks to hydraulic support
- large processing range up to 300 mm<sup>2</sup>
- 270° revolving quick-action crimping head
- automatic pressure limitation and monitoring via pressure sensor
- electronic control and monitoring of the crimping process
- Saving of all crimping cycles and error messages to internal memory
- Reading of all cycles and error messages via USB
- Li-ion rechargeable battery with charge status indicator: 18 V, 2 Ah

## General ordering data

Type	EPG 60	Version
Order No.	<a href="#">2453810000</a>	Pressing tools, Tools, Pressing tool, 6mm <sup>2</sup> , 300mm <sup>2</sup> , Hexagonal
GTIN (EAN)	4050118468434	crimp, WM crimp, Indent crimp, Trapezoidal crimp, Oval crimping
Qty.	1 ST	

## ... for tubular cable lugs



Crimping tools for cable lugs, connectors and wire-end ferrules with interchangeable inserts

- extremely fast processing thanks to hydraulic support
- large processing range up to 300 mm<sup>2</sup>
- 270° revolving quick-action crimping head
- automatic pressure limitation and monitoring via pressure sensor
- electronic control and monitoring of the crimping process
- Saving of all crimping cycles and error messages to internal memory
- Reading of all cycles and error messages via USB
- Li-ion rechargeable battery with charge status indicator: 18 V, 2 Ah

## General ordering data

Type	ES EPG/HPG 60 WM 240	Version
Order No.	<a href="#">2469640000</a>	Crimping tool insert, 240mm <sup>2</sup> , WM crimp
GTIN (EAN)	4050118484052	
Qty.	1 ST	

## KWN-M16/-240 45

Weidmüller Interface GmbH &amp; Co. KG

Klingenbergsstraße 26

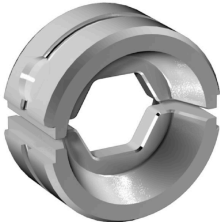
D-32758 Detmold

Germany

www.weidmueller.com

## Accessories

## ... for compression cable lugs



Crimping tools for cable lugs, connectors and wire-end ferrules with interchangeable inserts

- extremely fast processing thanks to hydraulic support
- large processing range up to 300 mm<sup>2</sup>
- 270° revolving quick-action crimping head
- automatic pressure limitation and monitoring via pressure sensor
- electronic control and monitoring of the crimping process
- Saving of all crimping cycles and error messages to internal memory
- Reading of all cycles and error messages via USB
- Li-ion rechargeable battery with charge status indicator: 18 V, 2 Ah

## General ordering data

Type	ES EPG/HPG 60 HEX 240	Version
Order No.	<a href="#">2505260000</a>	Crimping tool insert, 240mm <sup>2</sup> , Hexagonal crimp
GTIN (EAN)	4050118519648	
Qty.	1 ST	

## Tools



Crimping tools for cable lugs, connectors and wire-end ferrules with interchangeable inserts

- extremely fast processing thanks to hydraulic support
- large processing range up to 400 mm<sup>2</sup>
- 360° revolving quick action crimping head
- automatic pressure limitation and monitoring via pressure sensor
- Additional features for APG series:
- electronic control and monitoring of the crimping process
- Saving of all crimping cycles and error messages to internal memory
- Reading of all cycles and error messages via USB

## General ordering data

Type	HPG 60	Version
Order No.	<a href="#">2453820000</a>	6mm <sup>2</sup> , 300mm <sup>2</sup> , Hexagonal crimp, WM crimp, Indent crimp,
GTIN (EAN)	4050118468427	Trapezoidal crimp, Oval crimping
Qty.	1 ST	

## KWN-M16/-240 45

Weidmüller Interface GmbH &amp; Co. KG

Klingenbergstraße 26

D-32758 Detmold

Germany

www.weidmueller.com

## Accessories

## ... for tubular cable lugs (acc. to EN 13600)



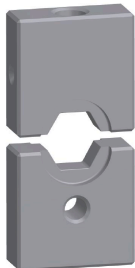
Crimping tools for cable lugs, connectors and wire-end ferrules with interchangeable inserts

- extremely fast processing thanks to hydraulic support
- large processing range up to 400 mm<sup>2</sup>
- 360° revolving quick action crimping head
- automatic pressure limitation and monitoring via pressure sensor
- Additional features for APG series:
- electronic control and monitoring of the crimping process
- Saving of all crimping cycles and error messages to internal memory
- Reading of all cycles and error messages via USB

## General ordering data

Type	ES APG 80 WM 240	Version
Order No.	<a href="#">1502580000</a>	240mm <sup>2</sup> , WM crimp
GTIN (EAN)	4050118310689	
Qty.	1 ST	

## ... for compression cable lugs (acc. to DIN 46235)



Crimping tools for cable lugs, connectors and wire-end ferrules with interchangeable inserts

- extremely fast processing thanks to hydraulic support
- large processing range up to 400 mm<sup>2</sup>
- 360° revolving quick action crimping head
- automatic pressure limitation and monitoring via pressure sensor
- Additional features for APG series:
- electronic control and monitoring of the crimping process
- Saving of all crimping cycles and error messages to internal memory
- Reading of all cycles and error messages via USB

## General ordering data

Type	ES APG 80 HEX 240	Version
Order No.	<a href="#">1502740000</a>	240mm <sup>2</sup> , Hexagonal crimp
GTIN (EAN)	4050118310481	
Qty.	1 ST	