

KRN-M16/-300 S**Weidmüller Interface GmbH & Co. KG**Klingenbergstraße 26
D-32758 Detmold
Germany

www.weidmueller.com



The use of insulated connectors guarantees users consistent electrical connection quality in the long term.

- Wide range of insulated and non-insulated cable lugs and connectors
- Tubular cable lugs according to current market standards (Euroseries)
- Compression cable lugs acc. to DIN 46235
- Sheet metal cable lugs acc. to DIN 46234
- Insulated ring cable lugs to DIN 46237
- Insulated pin cable lugs to DIN 46231

General ordering data

| | |
|-----------------|--|
| Version | cable lug, terminal end,300 mm ² ,300 mm ² - 300 mm ² |
| Order No. | 1494400000 |
| Type | KRN-M16/-300 S |
| GTIN (EAN) | 4050118303889 |
| Qty. | 5 items |
| Delivery status | This article will no longer be available in the future. |
| Available until | 2026-03-31T00:00:00+02:00 |

KRN-M16/-300 S

Weidmüller Interface GmbH & Co. KG
 Klingenbergstraße 26
 D-32758 Detmold
 Germany

www.weidmueller.com

Technical data

Approvals

ROHS Conform

Dimensions and weights

Net weight 193.6 g

Environmental Product Compliance

RoHS Compliance Status Compliant without exemption
 REACH SVHC No SVHC above 0.1 wt%

Technical data

Version Euro series, narrow flange

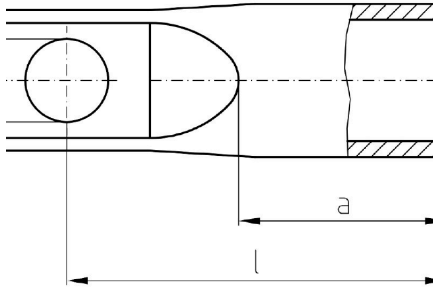
Connectors

| | | | |
|--------------------------------|---------------------|--------------------------------|---------------------|
| Conductor cross-section, max. | 300 mm ² | Conductor cross-section, min. | 300 mm ² |
| Conductor cross-section | 300 mm ² | Insulation | not available |
| Hole | M 16 | Identification colour | None |
| Inside diameter of shaft (d1) | 23.5 mm | Outside diameter of shaft (d3) | 30 mm |
| Shaft length (a) | 42 mm | Connection length (l) | 81 mm |
| Inside diameter of flange (d2) | 17 mm | Flange width (b) | 30 mm |

Classifications

| | | | |
|-------------|-------------|-------------|-------------|
| ETIM 6.0 | EC001051 | ETIM 7.0 | EC001051 |
| ETIM 8.0 | EC001051 | ETIM 9.0 | EC001051 |
| ETIM 10.0 | EC001051 | ECLASS 9.0 | 27-40-02-05 |
| ECLASS 9.1 | 27-40-02-05 | ECLASS 10.0 | 27-40-02-05 |
| ECLASS 11.0 | 27-40-02-05 | ECLASS 12.0 | 27-40-02-05 |
| ECLASS 13.0 | 27-40-02-05 | ECLASS 14.0 | 27-40-02-05 |
| ECLASS 15.0 | 27-40-02-05 | | |

Drawings



KRN-M16/-300 S

Weidmüller Interface GmbH & Co. KG

Klingenbergstraße 26

D-32758 Detmold

Germany

www.weidmueller.com

Accessories

... for tubular cable lugs (acc. to EN 13600)



Crimping tools for cable lugs, connectors and wire-end ferrules with interchangeable inserts

- extremely fast processing thanks to hydraulic support
- large processing range up to 400 mm²
- 360° revolving quick action crimping head
- automatic pressure limitation and monitoring via pressure sensor
- Additional features for APG series:
- electronic control and monitoring of the crimping process
- Saving of all crimping cycles and error messages to internal memory
- Reading of all cycles and error messages via USB

General ordering data

| | | | |
|------------|----------------------------|-------------------------------|--|
| Type | ES APG 80 WM 300 | Version | |
| Order No. | 1502590000 | 300mm ² , WM crimp | |
| GTIN (EAN) | 4050118310511 | | |
| Qty. | 1 ST | | |

... for compression cable lugs (acc. to DIN 46235)



Crimping tools for cable lugs, connectors and wire-end ferrules with interchangeable inserts

- extremely fast processing thanks to hydraulic support
- large processing range up to 400 mm²
- 360° revolving quick action crimping head
- automatic pressure limitation and monitoring via pressure sensor
- Additional features for APG series:
- electronic control and monitoring of the crimping process
- Saving of all crimping cycles and error messages to internal memory
- Reading of all cycles and error messages via USB

General ordering data

| | | | |
|------------|----------------------------|--------------------------------------|--|
| Type | ES APG 80 HEX 300 | Version | |
| Order No. | 1502750000 | 300mm ² , Hexagonal crimp | |
| GTIN (EAN) | 4050118310962 | | |
| Qty. | 1 ST | | |