

**KRN-M12/-240 S****Weidmüller Interface GmbH & Co. KG**

Klingenbergstraße 26

D-32758 Detmold

Germany

www.weidmueller.com



The use of insulated connectors guarantees users consistent electrical connection quality in the long term.

- Wide range of insulated and non-insulated cable lugs and connectors
- Tubular cable lugs according to current market standards (Euroseries)
- Compression cable lugs acc. to DIN 46235
- Sheet metal cable lugs acc. to DIN 46234
- Insulated ring cable lugs to DIN 46237
- Insulated pin cable lugs to DIN 46231

**General ordering data**

Version	cable lug, terminal end, 240 mm <sup>2</sup> , 240 mm <sup>2</sup> - 240 mm <sup>2</sup>
Order No.	<a href="#">1494350000</a>
Type	KRN-M12/-240 S
GTIN (EAN)	4050118303933
Qty.	5 items

**KRN-M12/-240 S**

**Weidmüller Interface GmbH & Co. KG**  
 Klingenbergstraße 26  
 D-32758 Detmold  
 Germany

www.weidmueller.com

**Technical data**

**Approvals**

ROHS Conform

**Dimensions and weights**

Net weight 117.14 g

**Environmental Product Compliance**

RoHS Compliance Status Compliant without exemption  
 REACH SVHC No SVHC above 0.1 wt%

**Technical data**

Version Euro series, narrow flange

**Connectors**

Conductor cross-section, max.	240 mm <sup>2</sup>	Conductor cross-section, min.	240 mm <sup>2</sup>
Conductor cross-section	240 mm <sup>2</sup>	Insulation	not available
Hole	M 12	Identification colour	None
Inside diameter of shaft (d1)	21 mm	Outside diameter of shaft (d3)	26 mm
Shaft length (a)	35 mm	Connection length (l)	65 mm
Inside diameter of flange (d2)	13 mm	Flange width (b)	30 mm

**Classifications**

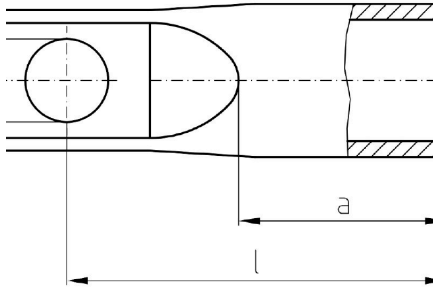
ETIM 6.0	EC001051	ETIM 7.0	EC001051
ETIM 8.0	EC001051	ETIM 9.0	EC001051
ETIM 10.0	EC001051	ECLASS 9.0	27-40-02-05
ECLASS 9.1	27-40-02-05	ECLASS 10.0	27-40-02-05
ECLASS 11.0	27-40-02-05	ECLASS 12.0	27-40-02-05
ECLASS 13.0	27-40-02-05	ECLASS 14.0	27-40-02-05
ECLASS 15.0	27-40-02-05		

**KRN-M12/-240 S**

**Weidmüller Interface GmbH & Co. KG**  
Klingenbergstraße 26  
D-32758 Detmold  
Germany

**Drawings**

[www.weidmueller.com](http://www.weidmueller.com)



## KRN-M12/-240 S

Weidmüller Interface GmbH &amp; Co. KG

Klingenbergstraße 26

D-32758 Detmold

Germany

www.weidmueller.com

## Accessories

## Tools



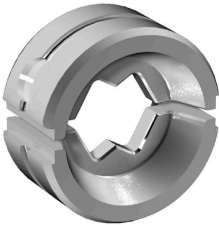
Crimping tools for cable lugs, connectors and wire-end ferrules with interchangeable inserts

- extremely fast processing thanks to hydraulic support
- large processing range up to 300 mm<sup>2</sup>
- 270° revolving quick-action crimping head
- automatic pressure limitation and monitoring via pressure sensor
- electronic control and monitoring of the crimping process
- Saving of all crimping cycles and error messages to internal memory
- Reading of all cycles and error messages via USB
- Li-ion rechargeable battery with charge status indicator: 18 V, 2 Ah

## General ordering data

Type	EPG 60	Version
Order No.	<a href="#">2453810000</a>	Pressing tools, Tools, Pressing tool, 6mm <sup>2</sup> , 300mm <sup>2</sup> , Hexagonal
GTIN (EAN)	4050118468434	crimp, WM crimp, Indent crimp, Trapezoidal crimp, Oval crimping
Qty.	1 ST	

## ... for tubular cable lugs



Crimping tools for cable lugs, connectors and wire-end ferrules with interchangeable inserts

- extremely fast processing thanks to hydraulic support
- large processing range up to 300 mm<sup>2</sup>
- 270° revolving quick-action crimping head
- automatic pressure limitation and monitoring via pressure sensor
- electronic control and monitoring of the crimping process
- Saving of all crimping cycles and error messages to internal memory
- Reading of all cycles and error messages via USB
- Li-ion rechargeable battery with charge status indicator: 18 V, 2 Ah

## General ordering data

Type	ES EPG/HPG 60 WM 240	Version
Order No.	<a href="#">2469640000</a>	Crimping tool insert, 240mm <sup>2</sup> , WM crimp
GTIN (EAN)	4050118484052	
Qty.	1 ST	

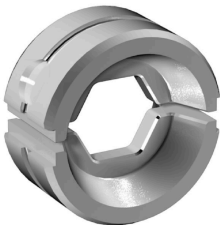
**KRN-M12/-240 S**

**Weidmüller Interface GmbH & Co. KG**  
 Klingenbergstraße 26  
 D-32758 Detmold  
 Germany

www.weidmueller.com

**Accessories**

**... for compression cable lugs**



- Crimping tools for cable lugs, connectors and wire-end ferrules with interchangeable inserts
- extremely fast processing thanks to hydraulic support
  - large processing range up to 300 mm<sup>2</sup>
  - 270° revolving quick-action crimping head
  - automatic pressure limitation and monitoring via pressure sensor
  - electronic control and monitoring of the crimping process
  - Saving of all crimping cycles and error messages to internal memory
  - Reading of all cycles and error messages via USB
  - Li-ion rechargeable battery with charge status indicator: 18 V, 2 Ah

**General ordering data**

Type	ES EPG/HPG 60 HEX 240	Version	
Order No.	<a href="#">2505260000</a>	Version	Crimping tool insert, 240mm <sup>2</sup> , Hexagonal crimp
GTIN (EAN)	4050118519648		
Qty.	1 ST		

**Tools**



- Crimping tools for cable lugs, connectors and wire-end ferrules with interchangeable inserts
- extremely fast processing thanks to hydraulic support
  - large processing range up to 400 mm<sup>2</sup>
  - 360° revolving quick action crimping head
  - automatic pressure limitation and monitoring via pressure sensor
  - Additional features for APG series:
  - electronic control and monitoring of the crimping process
  - Saving of all crimping cycles and error messages to internal memory
  - Reading of all cycles and error messages via USB

**General ordering data**

Type	HPG 60	Version	
Order No.	<a href="#">2453820000</a>	Version	6mm <sup>2</sup> , 300mm <sup>2</sup> , Hexagonal crimp, WM crimp, Indent crimp, Trapezoidal crimp, Oval crimping
GTIN (EAN)	4050118468427		
Qty.	1 ST		

## KRN-M12/-240 S

**Weidmüller Interface GmbH & Co. KG**  
 Klingenbergstraße 26  
 D-32758 Detmold  
 Germany

www.weidmueller.com

## Accessories

### ... for tubular cable lugs (acc. to EN 13600)



Crimping tools for cable lugs, connectors and wire-end ferrules with interchangeable inserts

- extremely fast processing thanks to hydraulic support
- large processing range up to 400 mm<sup>2</sup>
- 360° revolving quick action crimping head
- automatic pressure limitation and monitoring via pressure sensor
- Additional features for APG series:
  - electronic control and monitoring of the crimping process
  - Saving of all crimping cycles and error messages to internal memory
  - Reading of all cycles and error messages via USB

#### General ordering data

Type	ES APG 80 WM 240	Version	
Order No.	<a href="#">1502580000</a>	Version	240mm <sup>2</sup> , WM crimp
GTIN (EAN)	4050118310689		
Qty.	1 ST		

### ... for compression cable lugs (acc. to DIN 46235)



Crimping tools for cable lugs, connectors and wire-end ferrules with interchangeable inserts

- extremely fast processing thanks to hydraulic support
- large processing range up to 400 mm<sup>2</sup>
- 360° revolving quick action crimping head
- automatic pressure limitation and monitoring via pressure sensor
- Additional features for APG series:
  - electronic control and monitoring of the crimping process
  - Saving of all crimping cycles and error messages to internal memory
  - Reading of all cycles and error messages via USB

#### General ordering data

Type	ES APG 80 HEX 240	Version	
Order No.	<a href="#">1502740000</a>	Version	240mm <sup>2</sup> , Hexagonal crimp
GTIN (EAN)	4050118310481		
Qty.	1 ST		