

KSI/1,5-2,5

Weidmüller Interface GmbH & Co. KG

Klingenbergstraße 26

D-32758 Detmold

Germany

www.weidmueller.com



Insulated pin-cable connector made from PVC or PC/PA

- Conventional designs
- Not soldered
- With conical entry funnel

General ordering data

Version	cable lug, terminal end, Insulated cable connector, 2.5 mm ² , 1.5 mm ² - 2.5 mm ²
Order No.	1491410000
Type	KSI/1,5-2,5
GTIN (EAN)	4050118301632
Qty.	100 items

Technical data

Approvals

ROHS	Conform
------	---------

Dimensions and weights

Net weight	0.1 g
------------	-------

Environmental Product Compliance

RoHS Compliance Status	Compliant without exemption
REACH SVHC	No SVHC above 0.1 wt%

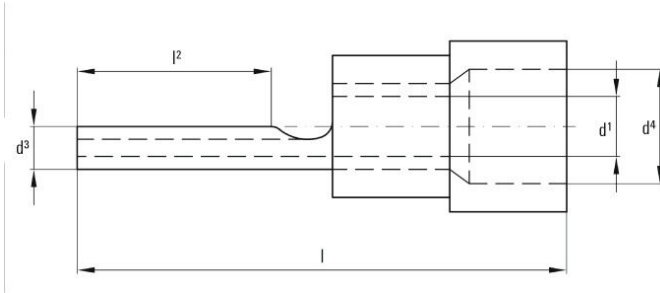
Connectors

Conductor cross-section, max.	2.5 mm ²	Conductor cross-section, min.	1.5 mm ²
Conductor cross-section	2.5 mm ²	Insulation	Available, PC
Material/plastic	PC	Length 1 (I1)	27 mm
Identification colour	blue	Inside diameter of shaft (d1)	2.3 mm
Length 2 (I2)	14 mm	Outside diameter of shaft (d3)	1.9 mm
Inside diameter of collar (d4)	4.5 mm		

Classifications

ETIM 8.0	EC001059	ETIM 9.0	EC001059
ETIM 10.0	EC001059	ECLASS 14.0	27-40-02-92
ECLASS 15.0	27-40-02-92		

Drawings



Crimping tools



Crimping tools for insulated connectors
 cable lugs, terminal pins, parallel and serial connectors,
 plug-in connectors

- Ratchet guarantees precise crimping
- Release option in the event of incorrect operation
- With stop for exact positioning of the contacts.
- Tested to DIN EN 60352 part 2

General ordering data

Type	HTI 15	Version
Order No.	9014400000	Pressing tool, Tool for insulated cable connectors, 0.5mm ² , 2.5mm ² ,
GTIN (EAN)	4008190159412	Double crimp
Qty.	1 ST	
Type	CTI 6	Version
Order No.	9006120000	Pressing tool, Crimping tool for contacts, 0.5mm ² , 6mm ² , Oval
GTIN (EAN)	4008190044527	crimping, Double crimp
Qty.	1 ST	
Type	CTI 6 G	Version
Order No.	9202850000	Pressing tool, Tool for insulated cable connectors, 0.5mm ² , 6mm ² ,
GTIN (EAN)	4032248517855	Oval crimping, Parallel crimp
Qty.	1 ST	