

## IE-SR-2GT-LAN-FN

**Weidmüller Interface GmbH & Co. KG**

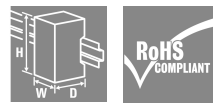
Klingenbergstraße 26

D-32758 Detmold

Germany

[www.weidmueller.com](http://www.weidmueller.com)

### Product image



#### Weidmüller Industrial Security Routers

- Secure networks
  - Stateful packet inspection Firewall
  - IP/Port- forwarding
  - Network segmentation
- Easy integration of machine networks into manufacturing networks through 1: 1 NAT
- Secure and easy remote maintenance with Weidmüller u-link remote access service
- Enable modular and future proof network architectures with static and dynamic routing
- Secure communication over the Internet by using IPsec and OpenVPN
- Reliable internet connection, even without on-site internet access, thanks to integrated 4G/LTE cellular modem
- Full flexibility thanks to Fast Ethernet and Gigabit Ethernet interfaces ranging from 2 up to 4 ports.

#### General ordering data

Version	Security/NAT Router, Gigabit Ethernet, 2x RJ45 10/100/1000BaseT(X), IP20, -20 °C...70
Order No.	<a href="#">1489940000</a>
Type	IE-SR-2GT-LAN-FN
GTIN (EAN)	4050118299533
Qty.	1 items
Delivery status	Discontinued
Available until	2022-10-31T00:00:00+01:00
Alternative product	<a href="#">IE-SR-4GT</a>

**Technical data**

**Approvals**

Approvals



ROHS	Conform
UL File Number Search	<a href="#">UL Website</a>
Certificate no. (cULus)	E141197

**Dimensions and weights**

Depth	140	Depth (inches)	5.5118 inch
Height	170 mm	Height (inches)	6.6929 inch
Width	35 mm	Width (inches)	1.378 inch
Net weight	700 g		

**Temperatures**

Storage temperature	-20 °C...85 °C	Operating temperature	-20 °C...70
Humidity	5 - 90 %, no condensation		

**Environmental Product Compliance**

RoHS Compliance Status	Compliant with exemption
RoHS Exemption (if applicable/known)	6c
REACH SVHC	Lead 7439-92-1
SCIP	9229992a-00b9-4096-8962-200a7f33e289

**Network Services/Firewall/Management**

Management	Configuration via WEB interface (HTTP/HTTPS), Language interface can be switched to German or English, Configuration support through detailed help information (tool tip), Configurable multi-user access with freely definable rights, Support for SNMP v1/v2/v3, event log/syslog	Network services	DHCP Server / DHCP Relay, DNS relay, NTP client, DynDNS (DHCP client acc. to RFC 2136)
Firewall	IPv4 Stateful Packet Inspection Firewall (incoming/outgoing), NAT masquerading, 1:1 NAT, Port forwarding, layer 2/3 filter (VLAN ID, VLAN QoS Tag, MAC address, EtherType frame), Auto-learning function to create packet filter rules (analysis of network traffic), Layer 2/3-based packet prioritisation (Ethernet Frame, IP Header, VLAN Tag)		

## IE-SR-2GT-LAN-FN

**Weidmüller Interface GmbH & Co. KG**  
 Klingenbergstraße 26  
 D-32758 Detmold  
 Germany

www.weidmueller.com

## Technical data

### Miscellaneous

Modbus/TCP	Integral modbus TCP server for status queries	Monitoring	Client monitoring (per ICMP) with alarm function in the event of a fault
Diagnostics	Remote capture function for network diagnostics via a connected PC (Wireshark)		

### Modes of operation

IP router	IP routing (IPv4, Layer-3) with SPI firewall (Stateful Packet Inspection)	Transparent bridge	2-port switch with additional layer-2 filter
-----------	---	--------------------	--

### EMC conformity and approvals

EMC standards	FCC Part 15, Class A, EN 61000-6-4, EN 61000-6-2	Vibration	according to IEC 60068-2-6
Shock	according to IEC 60068-2-27	Safety standard	UL508

### Environmental conditions

Operating temperature, max.	70		
Operating temperature, min.	-20 °C		
Humidity	5 - 90 %, no condensation		
Storage temperature, max.	85 °C		
Storage temperature, min.	-20 °C		
Operating altitude	Altitude, max.	2000 m	
	Note	in acc. with UL	
	Altitude, max.	6000 m	
	Note	for restrictions, see the manufacturer's declaration for operating altitude in section downloads	

### Guarantee

Time interval	3 years		
---------------	---------	--	--

### Interfaces

RJ45 ports	10/100/1000BaseT(X), auto negotiation, Full-/half-duplex mode, Auto MDI/MDI-X port	Number of ports	2x RJ45 10/100/1000BaseT(X)
Function reset button	Restoration of factory settings	Digital outputs	Alarm: indicates a configurable network state or fault (24 V out)
Digital inputs	Cut: physically disconnects (Link Down) the WAN port (24 V in)	SCM-Card slot type	Smart Card (ID-000 format), Save and restore the configuration using smart card (memory chip)
USB port	USB 2.0 interface for firmware update or restoration of the device configuration via USB flash drive	Number of SCM-Card slots	1
LED indicator	Indication of voltage status, Status, CUT, Alarm,		

## IE-SR-2GT-LAN-FN

**Weidmüller Interface GmbH & Co. KG**  
 Klingenbergstraße 26  
 D-32758 Detmold  
 Germany

www.weidmueller.com

## Technical data

Active VPN connection,  
 Port LED: Link/ACT, Speed  
 (RJ45 port)

### MTBF

MTBF	Operating time (hours), min.	135270 h
------	------------------------------	----------

### Power supply

Supply voltage	24 V DC, 1 single input, NEC class 2, (for use in conformity with UL specifications: 7 - 30 V DC)		
Voltage supply range	Voltage type	DC	
	Voltage, min.	7 V	
	Voltage, max.	36 V	
Current consumption	Voltage	24 V	
	Current	0.6 A	

### Technical data

Housing main material	diecast aluminium	Type of mounting	DIN rail, VESA 75
Protection degree	IP20	Speed	Gigabit Ethernet

### Classifications

ETIM 8.0	EC001478	ETIM 9.0	EC001478
ETIM 10.0	EC001478	ECLASS 14.0	19-17-04-05
ECLASS 15.0	19-17-04-05		

## IE-SR-2GT-LAN-FN

**Weidmüller Interface GmbH & Co. KG**  
 Klingenbergstraße 26  
 D-32758 Detmold  
 Germany

www.weidmueller.com

## Accessories

## Ethernet



- Suitable for Cat. 5 (up to 100 MHz) and Cat. 6 (up to 250 MHz Class E)
- Suitable for PoE+ (according to IEEE 802.3at, IEEE 802.3bt Type 3 and 4)
- Protection of all wire pairs
- Connection via RJ45 sockets
- Metal housing

## General ordering data

Type	VDATA CAT6	Version	
Order No.	<a href="#">1348590000</a>	Terminal rail fixing, Surge protection, Cat.6, PoE, 802.3 bt at Type 1,	
GTIN (EAN)	4050118153002	802.3 bt at Type 2, 802.3 bt at Type 3, 802.3 bt at Type 4	
Qty.	1 ST		

## Mounting kit for 19" rack assembly

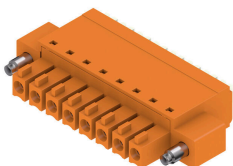
- For assembling DIN rail-based devices on 19" racks



## General ordering data

Type	RM-KIT	Version	
Order No.	<a href="#">1241440000</a>	Kit for 19"-rack mounting	
GTIN (EAN)	4050118029154		
Qty.	1 ST		

## BCF 3.81/180F



**PUSH IN** - Weidmüller's innovative connection system simplifies the wire connection process.

The benefits for users and applications:

- High packaging density due to very low component height. Simply insert the prepared wire - finished
- High component density with the compact SCDN / SCDN-THR two-tier pin header
- Simplified processing due to integrated push buttons for opening the clamping unit
- Intuitive handling – since the wire-entry area and handling area are clearly separated
- tool-free locking and releasing when using Weidmüller's patented release latch (LR)

The Weidmüller plug-in connectors, pitch 3.81 mm (0.15 inch), are compatible with the layout of customary plug-in connectors, can be coded and provide space for printing.

## IE-SR-2GT-LAN-FN

**Weidmüller Interface GmbH & Co. KG**  
 Klingenbergstraße 26  
 D-32758 Detmold  
 Germany

## Accessories

www.weidmueller.com

### General ordering data

Type	BCF 3.81/04/180F SN BK ...	Version
Order No.	<a href="#">1347870000</a>	PCB plug-in connector, female plug, 3.81 mm, Number of poles: 4,
GTIN (EAN)	4050118152609	180°, PUSH IN with push button, Clamping range, max. : 1.5 mm²,
Qty.	50 ST	Box
Type	BCF 3.81/03/180F SN BK ...	Version
Order No.	<a href="#">1347850000</a>	PCB plug-in connector, female plug, 3.81 mm, Number of poles: 3,
GTIN (EAN)	4050118152517	180°, PUSH IN with push button, Clamping range, max. : 1.5 mm²,
Qty.	50 ST	Box