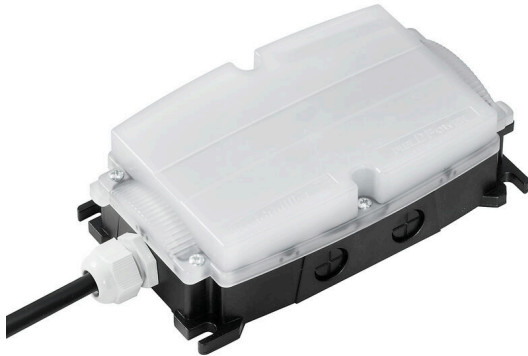


FP MONO LED DC SA

Weidmüller Interface GmbH & Co. KG
Klingenbergstraße 26
D-32758 Detmold
Germany

www.weidmueller.com



Energy-efficient emergency lighting with a long service life

- developed and to be used in accordance with DIN EN 60598-2-22
- LED lamp for harsh environmental conditions (shocks and vibration, temperature range)
- higher energy efficiency and service life than fluorescent lamps
- Can be used worldwide thanks to the multi-voltage input (20 V...60 VDC)
- high fire protection classification V0
- Beam direction to one side
- 5W Power

Versions

- Pluggable with heavy duty connector and round connector
- Pre-assembled 2.5 mm²

General ordering data

Order No.	1488520000
Type	FP MONO LED DC SA
GTIN (EAN)	4050118298666

FP MONO LED DC SA

Weidmüller Interface GmbH & Co. KG

Klingenbergstraße 26
D-32758 Detmold
Germany

www.weidmueller.com

Technical data

Approvals

Approvals



ROHS	Conform
UL File Number Search	UL Website
Certificate no. (cULus)	E345151

Dimensions and weights

Depth	208 mm	Depth (inches)	8.189 inch
Height	55 mm	Height (inches)	2.1654 inch
Width	104 mm	Width (inches)	4.0945 inch
Length	208 mm	Length (inches)	8.189 inch
Net weight	602 g		

Temperatures

Storage temperature	-40 °C...85 °C	Operating temperature	-40 °C...55 °C
Humidity	92 % @ 25 °C		

Environmental Product Compliance

RoHS Compliance Status	Compliant with exemption
RoHS Exemption (if applicable/known)	6c, 7a, 7cl
REACH SVHC	Lead 7439-92-1, Potassium perfluorobutane sulfonate 29420-49-3
SCIP	cfe9d4bf-2d88-4e4b-aa73-fe200a7615a0

General data

Line type	Heluwind WK 103w-Torsion 2x2.5 mm ²	Silicone	No
Type of connection	Open cable end/length 2 m	UL 94 flammability rating	V-0
Halogen	yes (PVC cable)	Type of mounting	Screw mounting
Nominal voltage	24 V	Protection degree	IP54
Surge voltage category	II	Pollution severity	2
Insulation voltage	<500 V (housing/PE)	Mounting position, installation notice	Arbitrary
Protection class	II	Amplitude of deflection	1.5 mm (2-9 Hz)
Vibration resistance EN 60721-3-3	Class 3M3 sinusoidal, stationary	Shock resistance EN 60721-3-3	Class 3M3 portable
Light current	393 lm	Connector cross-section, max.	2.5 mm ²
Connector cross-section, min.	0.5 mm ²	Altitude	≤ 3000 m
Pre-assembled connector cross-section	2.5 mm ²	Short-circuit protection	Yes, internal
Light colour (CCT)	Cool White, 6000K, 6000K	Amplitude of acceleration	5 m/s ² (@ 9-200 Hz)
LED operating life	> 50.000 h	Shape of the LED module	Other
Efficiency class (according to EU Directive No. 874/2012)	Not required	Luminosity	6000 cd
Peak acceleration, type L	70 m/s ²		

Rated data acc. to IEC 60598-1

Power rating	5 W	Nominal current	0.2 A
DC input voltage range	20...60 V DC		

FP MONO LED DC SA

Weidmüller Interface GmbH & Co. KG
Klingenbergstraße 26
D-32758 Detmold
Germany

www.weidmueller.com

Technical data

Classifications

ETIM 8.0	EC000996	ETIM 9.0	EC000996
ETIM 10.0	EC000996	ECLASS 14.0	27-11-06-35
ECLASS 15.0	27-11-06-35		

FP MONO LED DC SA

Weidmüller Interface GmbH & Co. KG
Klingenbergstraße 26
D-32758 Detmold
Germany

Drawings

www.weidmueller.com

