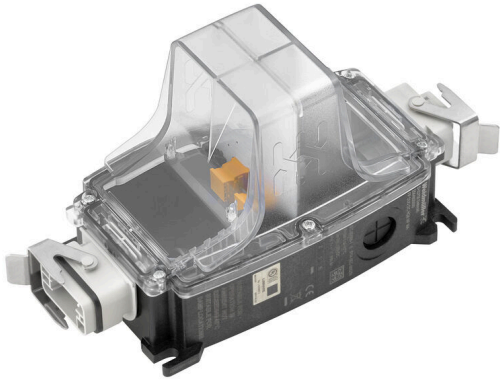


FP DUO LED DC HQ8



Energy-efficient emergency lighting with a long service life

- developed and to be used in accordance with DIN EN 60598-2-22
- LED lamp for harsh environmental conditions (shocks and vibration, temperature range)
- higher energy efficiency and service life than fluorescent lamps
- Can be used worldwide thanks to the multi-voltage input (20 V...60 VDC)
- high fire protection classification V0
- Beam direction to one side
- 5W Power

Versions

- Pluggable with heavy duty connector and round connector
- Pre-assembled 2.5 mm²

General ordering data

Order No.	1488480000
Type	FP DUO LED DC HQ8
GTIN (EAN)	4050118298567

FP DUO LED DC HQ8

Weidmüller Interface GmbH & Co. KG
Klingenbergstraße 26
D-32758 Detmold
Germany

www.weidmueller.com

Technical data

Approvals

Approvals



ROHS Conform

UL File Number Search [UL Website](#)

Certificate no. (cULus) E345151

Dimensions and weights

Height	128 mm	Height (inches)	5.0394 inch
Width	104 mm	Width (inches)	4.0945 inch
Length	271 mm	Length (inches)	10.6693 inch
Net weight	662 g		

Temperatures

Storage temperature	-40 °C...85 °C	Operating temperature	-40 °C...70 °C
Humidity	92 % @ 25 °C		

Environmental Product Compliance

RoHS Compliance Status	Compliant with exemption
RoHS Exemption (if applicable/known)	6c, 7a, 7cl
REACH SVHC	Lead 7439-92-1, Potassium perfluorobutane sulfonate 29420-49-3, 6,6'-di-tert-butyl-2,2'-methylenedi-p-cresol 119-47-1
SCIP	1058cf56-abda-4cb6-a963-1c7ea664989f

General data

Silicone	No	Type of connection	Plug-in connector with fixed number of poles, HQ 8
UL 94 flammability rating	V-0	Halogen	No
Protection degree	IP54	Surge voltage category	II
Pollution severity	2	Insulation voltage	<500 V (housing/PE)
Mounting position, installation notice	Arbitrary	Protection class	II
Amplitude of deflection	1.5 mm (2-9 Hz)	Vibration resistance EN 60721-3-3	Class 3M3 sinusoidal, stationary
Shock resistance EN 60721-3-3	Class 3M3 portable	Connector cross-section, max.	2.5 mm ²
Connector cross-section, min.	0.5 mm ²	Altitude	≤ 3000 m
Short-circuit protection	Yes, internal	Light colour (CCT)	Cool White, 6000K, 6000K
Amplitude of acceleration	5 m/s ² (@ 9-200 Hz)	LED operating life	> 50.000 h
Light current (in total in both directions)	496 lm	Shape of the LED module	Other
Efficiency class (according to EU Directive No. 874/2012)	E	Peak acceleration, type L	70 m/s ²

Rated data acc. to IEC 60598-1

Power rating	5 W	Input voltage	21.6 V ... 144 V DC / protected against reverse polarity
DC input voltage range	24...120 V DC		

FP DUO LED DC HQ8

Weidmüller Interface GmbH & Co. KG
Klingenbergstraße 26
D-32758 Detmold
Germany

www.weidmueller.com

Technical data

Classifications

ETIM 8.0	EC001959	ETIM 9.0	EC001959
ETIM 10.0	EC001959	ECLASS 14.0	27-11-06-40
ECLASS 15.0	27-11-06-40		