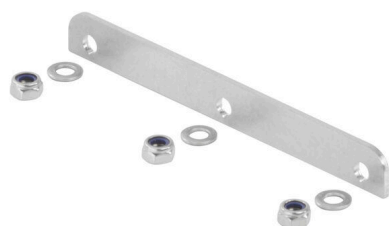


HDC HP550 MTA 3P SET**Weidmüller Interface GmbH & Co. KG**

Klingenbergstraße 26

D-32758 Detmold

Germany

www.weidmueller.com

Accessories especially suitable for the demands of wagon-to-wagon coupling have been developed for the HighPower end-wall connectors and thus significantly enhance the added value of the plug-in connectors. Easy-to-install coding pins ensure reverse polarity protection, plastic cover caps provide sufficient dust protection, while aluminium covers are designed to be absolutely water and dust-proof. The accessories intelligently round off the overall system.

General ordering data

Version	HDC enclosures, 0 V, Number of poles: 3, Screw connection
Order No.	1488230000
Type	HDC HP550 MTA 3P SET
GTIN (EAN)	4050118298291
Qty.	1 items

HDC HP550 MTA 3P SET

Weidmüller Interface GmbH & Co. KG
 Klingenbergstraße 26
 D-32758 Detmold
 Germany

www.weidmueller.com

Technical data

Approvals

ROHS	Conform
------	---------

Dimensions and weights

Depth	2.5 mm	Depth (inches)	0.0984 inch
Height	16 mm	Height (inches)	0.6299 inch
Width	140 mm	Width (inches)	5.5118 inch
Length	16 mm	Length (inches)	0.6299 inch
Net weight	49.39 g		

Temperatures

Limit temperature	-40 °C ... 120 °C
-------------------	-------------------

Environmental Product Compliance

RoHS Compliance Status	Compliant without exemption
REACH SVHC	No SVHC above 0.1 wt%

Dimensions

Width	140 mm
-------	--------

General data

Number of poles	3	Type of connection	Screw connection
UL 94 flammability rating	V-0	Surface finish	all others
Basic material	Sheet steel	Series	HighPower
Rated voltage (DIN EN 61984)	0 V	Free from halogens	false
Protection degree	None		

General data

Type of connection	Screw connection	Surface finish	all others
Basic material	Sheet steel	Series	HighPower

Important note

Product information	Depending on the intended operation, internally generated voltages can superimpose the working voltage and contain corresponding peaks. It is imperative to ensure that these peak voltages do not exceed the rated voltage. For applications outside of this specification, please contact us.
---------------------	---

Classifications

ETIM 8.0	EC002641	ETIM 9.0	EC002641
ETIM 10.0	EC002641	ECLASS 14.0	27-44-03-06
ECLASS 15.0	27-44-03-06		