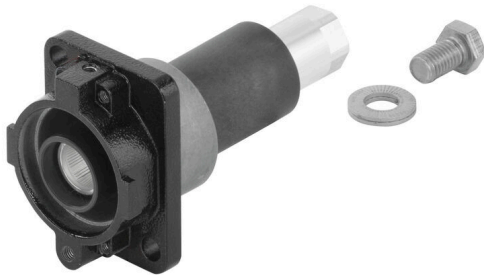


HDC HP550 ABGH BG**Weidmüller Interface GmbH & Co. KG**Klingenbergstraße 26
D-32758 Detmold
Germany

www.weidmueller.com



The protective housing is manufactured from seawater-resistant aluminium using pressure die casting. High standards of water and dust protection, as well as particularly high impact resistance, are the hallmarks of this housing series.

A sophisticated two-stage surface coating ensures years of reliability.

All screws, crimp contacts and other exterior accessory parts are made of corrosion-resistant stainless steel.

General ordering data

Version	HDC enclosures, 1500 V, Screw connection, Installation size: 550
Order No.	1475700000
Type	HDC HP550 ABGH BG
GTIN (EAN)	4050118282313
Qty.	1 items

HDC HP550 ABGH BG

Weidmüller Interface GmbH & Co. KG

Klingenbergstraße 26

D-32758 Detmold

Germany

www.weidmueller.com

Technical data

Approvals

ROHS	Conform
------	---------

Dimensions and weights

Depth	80 mm	Depth (inches)	3.1496 inch
Height	152 mm	Height (inches)	5.9842 inch
Width	60 mm	Width (inches)	2.3622 inch
Net weight	725.26 g		

Temperatures

Limit temperature	-40 °C ... 120 °C
-------------------	-------------------

Environmental Product Compliance

RoHS Compliance Status	Compliant with exemption
RoHS Exemption (if applicable/known)	6c
REACH SVHC	Lead 7439-92-1
SCIP	d447edfa-0214-4f34-b5ba-82eae491b46a

Dimensions

Width	60 mm
-------	-------

General data

Type of connection	Screw connection	Design of housing	Bulkhead housing
Installation size	550	UL 94 flammability rating	V-0
Colour	black (similar to RAL 9005)	Surface finish	Powder coating
Series	HighPower	Rated voltage (DIN EN 61984)	1500 V
Free from halogens	false	BG	550
Protection degree	IP68, in plugged condition		

General data

Type of connection	Screw connection	Colour	black (similar to RAL 9005)
Surface finish	Powder coating	Enclosure material	Aluminium diecast
Series	HighPower	Material of gasket	Silicone rubber
Material of contact	Copper alloy		

Important note

Product information	Depending on the intended operation, internally generated voltages can superimpose the working voltage and contain corresponding peaks. It is imperative to ensure that these peak voltages do not exceed the rated voltage. For applications outside of this specification, please contact us.
---------------------	---

Classifications

ETIM 8.0	EC000437	ETIM 9.0	EC000437
ETIM 10.0	EC000437	ECLASS 14.0	27-44-02-02
ECLASS 15.0	27-44-02-02		

HDC HP550 ABGH BG**Weidmüller Interface GmbH & Co. KG**

Klingenbergstraße 26

D-32758 Detmold

Germany

www.weidmueller.com**Accessories****Housings**

The protective housing is manufactured from seawater-resistant aluminium using pressure die casting. High standards of water and dust protection, as well as particularly high impact resistance, are the hallmarks of this housing series.

A sophisticated two-stage surface coating ensures years of reliability.

All screws, crimp contacts and other exterior accessory parts are made of corrosion-resistant stainless steel.

General ordering data

Type	HDC HP ABGH COVER	Version	
Order No.	1473470000	HDC enclosures, Cover	
GTIN (EAN)	4050118279917		
Qty.	1 ST		