

CH20M22 S RPP AGY 3747

Weidmüller Interface GmbH & Co. KG
Klingenbergstraße 26
D-32758 Detmold
Germany

www.weidmueller.com

Product image

The side element of the CH2OM housing offers you the option of an individual structure that can be flexibly adapted to your needs. A particularly practical advantage is that slots that are not required can simply be closed with covers. This not only ensures a clean and tidy appearance, but also protects against dust and other environmental influences. Take advantage of the versatility of the CH2OM housing to design your projects efficiently and according to your ideas!

General ordering data

Version	Side element, OMNIMATE Housing - series CH2OM Agate grey, Side element, RJ45 connection preparation, Width: 22.5 mm
Order No.	1472820000
Type	CH20M22 S RPP AGY 3747
GTIN (EAN)	4050118279351
Qty.	10 items

CH20M22 S RPP AGY 3747

Weidmüller Interface GmbH & Co. KG
Klingenbergstraße 26
D-32758 Detmold
Germany

www.weidmueller.com

Technical data

Approvals

ROHS	Conform
------	---------

Dimensions and weights

Depth	105.5 mm	Depth (inches)	4.1535 inch
Height	22.8 mm	Height (inches)	0.8976 inch
Width	22.5 mm	Width (inches)	0.8858 inch
Net weight	8.4 g		

Temperatures

Ambient temperature	-25 °C...85 °C	Operating temperature range	-40...120 °C
Humidity	5 - 93% rel. humidity, Tu = 40°C, no condensation		

Environmental Product Compliance

RoHS Compliance Status	Compliant without exemption
REACH SVHC	No SVHC above 0.1 wt%

Material data

UL 94 flammability rating	V-0	Insulating material	PA 66 GF 30
Insulating material group	I	Surface finish	untreated
Basic material	Plastic	Comparative Tracking Index (CTI)	600 ≤ CTI

General data

Colour	Agate grey	Protection degree	IP20 in installed state
Colour chart (similar)	RAL 7038	Information regarding whole assembly, see referenced articles	CH20M22 B BK/OR 2010
Encapsulation option	No		

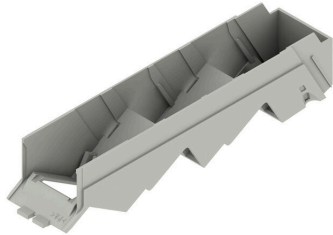
Component properties

Cut out as preparation for functional port integrated	Yes	Type of cut out as preparation for functional port	RJ45
Number of poles, max.	8	Number of ventilation openings	0
Number of slots for female plugs	2	Number of connection levels	3

Classifications

ETIM 8.0	EC001031	ETIM 9.0	EC001031
ETIM 10.0	EC001031	ECLASS 14.0	27-19-06-02
ECLASS 15.0	27-19-06-02		

Product image



Product image



Dimensioned drawing

