

CH20M22 S RPP AGY 3747**Weidmüller Interface GmbH & Co. KG**

Klingenbergstraße 26

D-32758 Detmold

Germany

www.weidmueller.com

Product image

The side element of the CH20M housing offers you the option of an individual structure that can be flexibly adapted to your needs. A particularly practical advantage is that slots that are not required can simply be closed with covers. This not only ensures a clean and tidy appearance, but also protects against dust and other environmental influences. Take advantage of the versatility of the CH20M housing to design your projects efficiently and according to your ideas!

General ordering data

| | |
|------------|---|
| Version | Side element, OMNIMATE Housing - series CH20M Agate grey, Side element, RJ45 connection preparation, Width: 22.5 mm |
| Order No. | 1472820000 |
| Type | CH20M22 S RPP AGY 3747 |
| GTIN (EAN) | 4050118279351 |
| Qty. | 10 items |

CH20M22 S RPP AGY 3747

Weidmüller Interface GmbH & Co. KG
Klingenbergstraße 26
D-32758 Detmold
Germany

www.weidmueller.com

Technical data

Approvals

| | |
|------|---------|
| ROHS | Conform |
|------|---------|

Dimensions and weights

| | | | |
|------------|----------|-----------------|-------------|
| Depth | 105.5 mm | Depth (inches) | 4.1535 inch |
| Height | 22.8 mm | Height (inches) | 0.8976 inch |
| Width | 22.5 mm | Width (inches) | 0.8858 inch |
| Net weight | 8.4 g | | |

Temperatures

| | | | |
|---------------------|---|-----------------------------|--------------|
| Ambient temperature | -25 °C...85 °C | Operating temperature range | -40...120 °C |
| Humidity | 5 - 93% rel. humidity, Tu = 40°C, no condensation | | |

Environmental Product Compliance

| | |
|------------------------|-----------------------------|
| RoHS Compliance Status | Compliant without exemption |
| REACH SVHC | No SVHC above 0.1 wt% |

Material data

| | | | |
|---------------------------|---------|----------------------------------|-------------|
| UL 94 flammability rating | V-0 | Insulating material | PA 66 GF 30 |
| Insulating material group | I | Surface finish | untreated |
| Basic material | Plastic | Comparative Tracking Index (CTI) | 600 ≤ CTI |

General data

| | | | |
|------------------------|------------|---|--------------------------------------|
| Colour | Agate grey | Protection degree | IP20 in installed state |
| Colour chart (similar) | RAL 7038 | Information regarding whole assembly, see referenced articles | CH20M22 B BK/OR 2010 |
| Encapsulation option | No | | |

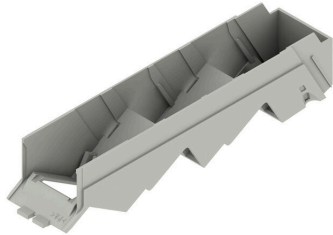
Component properties

| | | | |
|---|-----|--|------|
| Cut out as preparation for functional port integrated | Yes | Type of cut out as preparation for functional port | RJ45 |
| Number of poles, max. | 8 | Number of ventilation openings | 0 |
| Number of slots for female plugs | 2 | Number of connection levels | 3 |

Classifications

| | | | |
|-------------|-------------|-------------|-------------|
| ETIM 8.0 | EC001031 | ETIM 9.0 | EC001031 |
| ETIM 10.0 | EC001031 | ECLASS 14.0 | 27-19-06-02 |
| ECLASS 15.0 | 27-19-06-02 | | |

Product image



Product image



Dimensioned drawing

