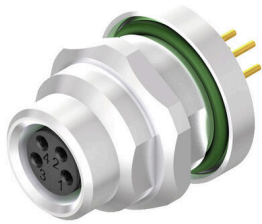


SAIE-M8B-8-TL-HW

Weidmüller Interface GmbH & Co. KG
Klingenbergstraße 26
D-32758 Detmold
Germany

www.weidmueller.com

Similar to illustration



Various build-in connectors are required for the connections on the device side of the sensor/actuator cabling. These are available in the versions M12, M8 and M5.

General ordering data

Version	Built-in plugs, M8 thread, Mounting thread: M 12, Number of poles: 8, Strand / cable length:
Order No.	1467650000
Type	SAIE-M8B-8-TL-HW
GTIN (EAN)	4050118273366
Qty.	20 items

SAIE-M8B-8-TL-HW

Weidmüller Interface GmbH & Co. KG

Klingenbergstraße 26

D-32758 Detmold

Germany

www.weidmueller.com

Technical data

Approvals

ROHS	Conform
------	---------

Dimensions and weights

Net weight	13 g
------------	------

Environmental Product Compliance

RoHS Compliance Status	Compliant with exemption
RoHS Exemption (if applicable/known)	6c
REACH SVHC	Lead 7439-92-1
SCIP	ebf89fc8-a87f-4691-b87a-dfb9921774b4

Technical specifications for cable

Number of poles	8
-----------------	---

Technical data customisable plug-in connectors

Number of poles	8	Coding	none
Contact surface	Gold-plated	Type of connection	Socket connector
Housing main material	Brass, nickel-plated	Nominal voltage	30 V
Nominal current	1.5 A	Protection degree	IP67, when screwed in
Cable gland	M 12	Gender of contact	Female
Temperature range of housing	-25...+85 °C		

Standards

Connector standard	IEC 61076-2-104
--------------------	-----------------

General data

Number of poles	8	Coding	none
Connection thread	M8 thread	Contact surface	Gold-plated
Type of connection	Socket connector	Housing main material	Brass, nickel-plated
Nominal voltage	30 V	Nominal current	1.5 A
Protection degree	IP67, when screwed in	Cable gland	M 12
Rated voltage	30 V	Connection 1	M8
Connection 2	Dip soldering	Mounting thread	M 12
Temperature range of housing	-25...+85 °C	Conductor O.D.	-

Classifications

ETIM 8.0	EC003568	ETIM 9.0	EC003568
ETIM 10.0	EC003568	ECLASS 14.0	27-44-01-10
ECLASS 15.0	27-44-01-10		

SAIE-M8B-8-TL-HW

Weidmüller Interface GmbH & Co. KG
Klingenbergstraße 26
D-32758 Detmold
Germany

Drawings

www.weidmueller.com

Pole scheme

