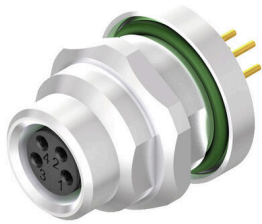


**SAIE-M8B-8-TL-HW**

**Weidmüller Interface GmbH & Co. KG**  
Klingenbergstraße 26  
D-32758 Detmold  
Germany

www.weidmueller.com

**Similar to illustration**

Various build-in connectors are required for the connections on the device side of the sensor/actuator cabling. These are available in the versions M12, M8 and M5.

**General ordering data**

|            |  |
|------------|--|
| Version    | Built-in plugs, M8 thread, Mounting thread: M 12, Number of poles: 8, Strand / cable length: |
| Order No.  | <a href="#">1467650000</a>   |
| Type       | SAIE-M8B-8-TL-HW   |
| GTIN (EAN) | 4050118273366  |
| Qty.       | 20 items   |

## SAIE-M8B-8-TL-HW

**Weidmüller Interface GmbH & Co. KG**  
 Klingenbergstraße 26  
 D-32758 Detmold  
 Germany

www.weidmueller.com

## Technical data

### Approvals

|      |         |
|------|---------|
| ROHS | Conform |
|------|---------|

### Dimensions and weights

|            |      |
|------------|------|
| Net weight | 13 g |
|------------|------|

### Environmental Product Compliance

|                                      |                                      |
|--------------------------------------|--------------------------------------|
| RoHS Compliance Status               | Compliant with exemption             |
| RoHS Exemption (if applicable/known) | 6c                                   |
| REACH SVHC                           | Lead 7439-92-1                       |
| SCIP                                 | ebf89fc8-a87f-4691-b87a-dfb9921774b4 |

### Technical specifications for cable

|                 |   |
|-----------------|---|
| Number of poles | 8 |
|-----------------|---|

### Technical data customisable plug-in connectors

|                              |                      |                    |                       |
|------------------------------|----------------------|--------------------|-----------------------|
| Number of poles              | 8                    | Coding             | none                  |
| Contact surface              | Gold-plated          | Type of connection | Socket connector      |
| Housing main material        | Brass, nickel-plated | Nominal voltage    | 30 V                  |
| Nominal current              | 1.5 A                | Protection degree  | IP67, when screwed in |
| Cable gland                  | M 12                 | Gender of contact  | Female                |
| Temperature range of housing | -25...+85 °C         |                    |                       |

### Standards

|                    |                 |
|--------------------|-----------------|
| Connector standard | IEC 61076-2-104 |
|--------------------|-----------------|

### General data

|                              |                       |                       |                      |
|------------------------------|-----------------------|-----------------------|----------------------|
| Number of poles              | 8                     | Coding                | none                 |
| Connection thread            | M8 thread             | Contact surface       | Gold-plated          |
| Type of connection           | Socket connector      | Housing main material | Brass, nickel-plated |
| Nominal voltage              | 30 V                  | Nominal current       | 1.5 A                |
| Protection degree            | IP67, when screwed in | Cable gland           | M 12                 |
| Rated voltage                | 30 V                  | Connection 1          | M8                   |
| Connection 2                 | Dip soldering         | Mounting thread       | M 12                 |
| Temperature range of housing | -25...+85 °C          | Conductor O.D.        | -                    |

### Classifications

|             |             |             |             |
|-------------|-------------|-------------|-------------|
| ETIM 8.0    | EC003568    | ETIM 9.0    | EC003568    |
| ETIM 10.0   | EC003568    | ECLASS 14.0 | 27-44-01-10 |
| ECLASS 15.0 | 27-44-01-10 |             |             |

**SAIE-M8B-8-TL-HW**

**Weidmüller Interface GmbH & Co. KG**  
Klingenbergstraße 26  
D-32758 Detmold  
Germany

**Drawings**

[www.weidmueller.com](http://www.weidmueller.com)

**Pole scheme**

