

## WS 10/12 MC NE GE

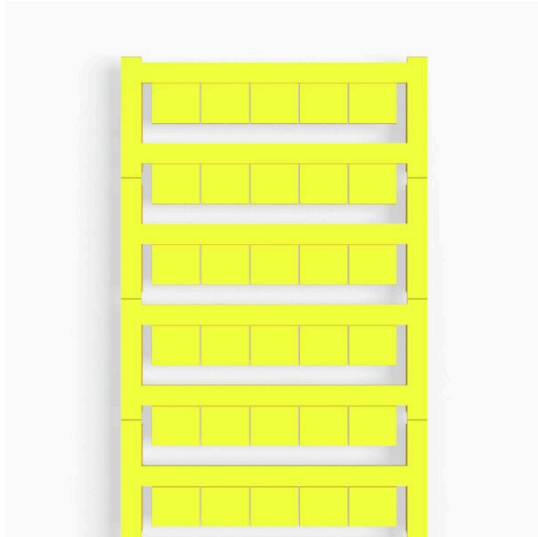
**Weidmüller Interface GmbH & Co. KG**

Klingenbergstraße 26

D-32758 Detmold

Germany

[www.weidmueller.com](http://www.weidmueller.com)



WS markers are the perfect match for the W-series connectors. Thanks to their system compatibility, the WS tags can also be used with the I-series and the Z-series. The large marking surfaces do not only permit long character strings but also multi-line text.

WS markers are ideal for labels with long, customised character strings. Thanks to the proven MultiCard format, printing with PrintJet CONNECT oder/or Plotter is possible.

- Can be fitted in strips or individually
- Markers in proven MultiCard format

For custom printing: Please send us a file of our labeling software M-Print PRO or M-Print PRO Online (without installation) for your labeling specifications.

### General ordering data

Version	WS, Terminal marker, 10 x 12 mm, Pitch in mm (P): 12.00 Weidmueller, yellow
Order No.	<a href="#">1466140000</a>
Type	WS 10/12 MC NE GE
GTIN (EAN)	4050118272376
Qty.	300 items

## WS 10/12 MC NE GE

Weidmüller Interface GmbH & Co. KG  
Klingenbergstraße 26  
D-32758 Detmold  
Germany

www.weidmueller.com

## Technical data

## Approvals

ROHS	Conform
------	---------

## Dimensions and weights

Height	10 mm	Height (inches)	0.3937 inch
Width	12 mm	Width (inches)	0.4724 inch
Net weight	0.29 g		

## Temperatures

Operating temperature range	-40...100 °C
-----------------------------	--------------

## Environmental Product Compliance

RoHS Compliance Status	Compliant without exemption		
REACH SVHC	No SVHC above 0.1 wt%		
Product Carbon Footprint	Cradle to gate	0.002 kg CO2eq.	

## General data

Width	12 mm		
UL 94 flammability rating	V-2		
Operating temperature range, max.	100 °C		
Operating temperature range, min.	-40 °C		
Colour	yellow		
Halogen	No		
Basic material	Polyamide 66		
Printed characters	neutral		
Number of markers per packaging unit	Form of supply	MultiCard	
compatible printer	<a href="#">PRINTJET CONNECT</a> , <a href="#">MCP BASIC 2</a> , <a href="#">MCP PLUS 2</a>		
Number of markers per combination	1 MultiCard = Terminal marker		
Operating temperature range	-40...100 °C		
Application/manufacturer	Weidmueller		

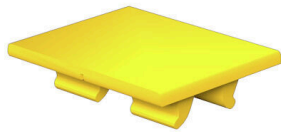
## Connector markers

Pitch in mm (P)	12.00 mm
-----------------	----------

## Classifications

ETIM 8.0	EC000761	ETIM 9.0	EC000761
ETIM 10.0	EC000761	ECLASS 14.0	27-28-11-01
ECLASS 15.0	27-28-11-01		

**Drawings**



**Drawing**

