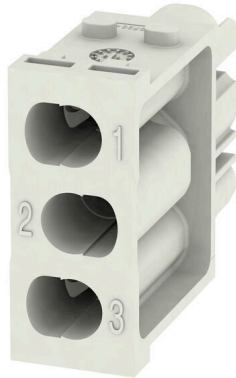


HDC MHX 3 FC

Weidmüller Interface GmbH & Co. KG
Klingenbergstraße 26
D-32758 Detmold
Germany

www.weidmueller.com



Flexible

The four module sizes make for individual plug solutions that save a huge amount of space. The smaller pitch translates into an optimised design too.

General ordering data

Version	Power module, 690 V, 40 A, Number of poles: 3, Crimp connection, Female, Required plug-in slots: 1
Order No.	1429350000
Type	HDC MHX 3 FC
GTIN (EAN)	4050118233476
Qty.	1 items

HDC MHX 3 FC

Weidmüller Interface GmbH & Co. KG

Klingenbergstraße 26
D-32758 Detmold
Germany

www.weidmueller.com

Technical data

Approvals

Approvals



ROHS Conform

UL File Number Search [UL Website](#)

Certificate No. (cURus) E92202

Dimensions and weights

Depth	34 mm	Depth (inches)	1.3386 inch
Height	43 mm	Height (inches)	1.6929 inch
Width	14.5 mm	Width (inches)	0.5709 inch
Net weight	8.19 g		

Temperatures

Limit temperature -40 °C ... 125 °C

Environmental Product Compliance

RoHS Compliance Status	Compliant without exemption
REACH SVHC	Potassium perfluorobutane sulfonate 29420-49-3
SCIP	1609748e-c278-4c9b-b3d1-e6215d2988cd

General data

Number of poles	3	UL 94 flammability rating	V-0
Insulation resistance	1012 Ω	Plugging cycles	≥ 500
Type	Female	Surge voltage category	III
Pollution severity	3	Basic material	Polycarbonate, glass fibre reinforced
Series	ModuPlug	Rated voltage (DIN EN 61984)	690 V
Rated voltage according to UL/CSA	600 V	Rated impulse voltage (DIN EN 61984)	8 kV
Rated current (DIN EN 61984)	40 A	Required plug-in slots	1

PE connection data

Connection type PE	Screw connection via module frame
--------------------	-----------------------------------

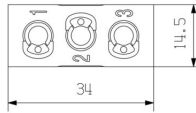
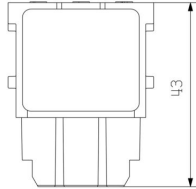
Version

Wire connection cross section AWG, max.	AWG 8	Stripping length, rated connection	8 mm
Type of connection	Crimp connection	Wire connection cross section AWG, min.	AWG 16
Conductor cross-section, max.	10 mm ²	Conductor cross-section, min.	1.5 mm ²

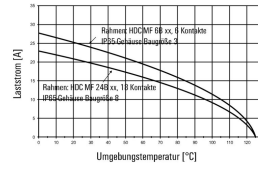
Classifications

ETIM 8.0	EC000438	ETIM 9.0	EC000438
ETIM 10.0	EC000438	ECLASS 14.0	27-44-02-17
ECLASS 15.0	27-44-02-17		

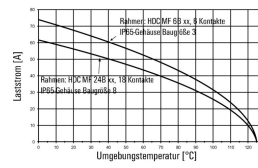
Drawings



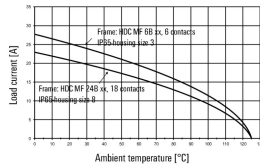
HDC-MHX 3-Module im IP65-Gehäuse,
 Leiter H07V-K1,5:



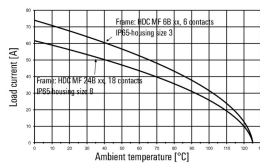
HDC-MHX 3-Module im IP65-Gehäuse,
 Leiter H07V-K10:



HDC-MHX 3-modules in the IP65-housing,
 Conductor H07V-K1,5:



HDC-MHX 3-modules in the IP65-housing,
 Conductor H07V-K10:



HDC MHX 3 FC

Weidmüller Interface GmbH & Co. KG
 Klingenbergstraße 26
 D-32758 Detmold
 Germany

www.weidmueller.com

Accessories

Crimp contacts HX

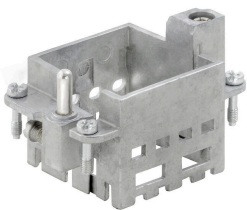
Crimps provide a electrical and mechanical connection between wire and contact that is both secure and reliable. The optimal crimp connection is gas-tight and corrosion-resistant.



General ordering data

Type	HDC C HX BM1.5AG	Version
Order No.	1002950000	Heavy-duty connectors, Crimp contact, MixMate, Female, Conductor
GTIN (EAN)	4032248697236	cross-section, max.: 1.5, turned, Copper alloy
Qty.	25 ST	
Type	HDC C HX BM2.5AG	Version
Order No.	1002960000	Heavy-duty connectors, Crimp contact, MixMate, Female, Conductor
GTIN (EAN)	4032248697243	cross-section, max.: 2.5, turned, Copper alloy
Qty.	25 ST	
Type	HDC C HX BM4.0AG	Version
Order No.	1002970000	Heavy-duty connectors, Crimp contact, HQ, MixMate, Female,
GTIN (EAN)	4032248697250	Conductor cross-section, max.: 4, turned, Copper alloy
Qty.	25 ST	
Type	HDC C HX BM6.0AG	Version
Order No.	1002980000	Heavy-duty connectors, Crimp contact, MixMate, Female, Conductor
GTIN (EAN)	4032248697267	cross-section, max.: 6, turned, Copper alloy
Qty.	25 ST	
Type	HDC C MHX BM10.0AG	Version
Order No.	2494560000	Heavy-duty connectors, Crimp contact, MHX, Female, Conductor
GTIN (EAN)	4050118504538	cross-section, max.: 8, turned, Copper alloy
Qty.	25 ST	

Standard



General ordering data

Type	HDC MF 6B AB	Version
Order No.	1428920000	Frame
GTIN (EAN)	4050118233414	
Qty.	1 ST	

HDC MHX 3 FC

Weidmüller Interface GmbH & Co. KG
 Klingenbergstraße 26
 D-32758 Detmold
 Germany

www.weidmueller.com

Accessories

Type	HDC MF 6B BA	Version
Order No.	1428940000	Frame
GTIN (EAN)	4050118233353	
Qty.	1 ST	
Type	HDC MF 10B AC	Version
Order No.	1428960000	Frame
GTIN (EAN)	4050118233223	
Qty.	1 ST	
Type	HDC MF 10B CA	Version
Order No.	1428980000	Frame
GTIN (EAN)	4050118233278	
Qty.	1 ST	
Type	HDC MF 16B AD	Version
Order No.	1429010000	Frame
GTIN (EAN)	4050118233315	
Qty.	1 ST	
Type	HDC MF 16B DA	Version
Order No.	1429030000	Frame
GTIN (EAN)	4050118233407	
Qty.	1 ST	
Type	HDC MF 24B AF	Version
Order No.	1429050000	Frame
GTIN (EAN)	4050118233285	
Qty.	1 ST	
Type	HDC MF 24B FA	Version
Order No.	1429070000	Frame
GTIN (EAN)	4050118233520	
Qty.	1 ST	

Counterpart

Electrical modules



Flexible

The four module sizes make for individual plug solutions that save a huge amount of space. The smaller pitch translates into an optimised design too.

General ordering data

Type	HDC MHX 3 MC	Version	
Order No.	1429340000	Power module, 690 V, 40 A, Number of poles: 3, Crimp connection,	
GTIN (EAN)	4050118233599	Pin, Required plug-in slots: 1	
Qty.	1 ST		