

**HDC MHX 3 MC****Weidmüller Interface GmbH & Co. KG**

Klingenbergstraße 26

D-32758 Detmold

Germany

www.weidmueller.com

**Flexible**

The four module sizes make for individual plug solutions that save a huge amount of space. The smaller pitch translates into an optimised design too.

**General ordering data**

Version	Power module, 690 V, 40 A, Number of poles: 3, Crimp connection, Pin, Required plug-in slots: 1
Order No.	<a href="#">1429340000</a>
Type	HDC MHX 3 MC
GTIN (EAN)	4050118233599
Qty.	1 items

## HDC MHX 3 MC

Weidmüller Interface GmbH & Co. KG  
Klingenbergstraße 26  
D-32758 Detmold  
Germany

www.weidmueller.com

## Technical data

## Approvals

Approvals



ROHS Conform

UL File Number Search [UL Website](#)

Certificate No. (cURus) E92202

## Dimensions and weights

Depth	34 mm	Depth (inches)	1.3386 inch
Height	40.75 mm	Height (inches)	1.6043 inch
Width	14.5 mm	Width (inches)	0.5709 inch
Net weight	8.6 g		

## Temperatures

Limit temperature -40 °C ... 125 °C

## Environmental Product Compliance

RoHS Compliance Status	Compliant without exemption
REACH SVHC	Potassium perfluorobutane sulfonate 29420-49-3
SCIP	1609748e-c278-4c9b-b3d1-e6215d2988cd

## General data

Number of poles	3	UL 94 flammability rating	V-0
Insulation resistance	1012 Ω	Plugging cycles	≥ 500
Type	Pin	Surge voltage category	III
Pollution severity	3	Basic material	Polycarbonate, glass fibre reinforced
Series	ModuPlug	Rated voltage (DIN EN 61984)	690 V
Rated voltage according to UL/CSA	600 V	Rated impulse voltage (DIN EN 61984)	8 kV
Rated current (DIN EN 61984)	40 A	Required plug-in slots	1

## PE connection data

Connection type PE	Screw connection via module frame
--------------------	-----------------------------------

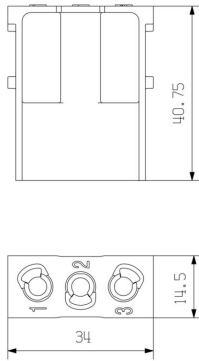
## Version

Wire connection cross section AWG, max.	AWG 8	Stripping length, rated connection	8 mm
Type of connection	Crimp connection	Wire connection cross section AWG, min.	AWG 16
Conductor cross-section, max.	10 mm <sup>2</sup>	Conductor cross-section, min.	1.5 mm <sup>2</sup>

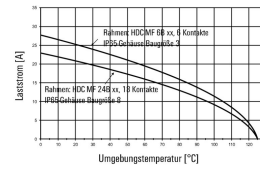
## Classifications

ETIM 8.0	EC000438	ETIM 9.0	EC000438
ETIM 10.0	EC000438	ECLASS 14.0	27-44-02-17
ECLASS 15.0	27-44-02-17		

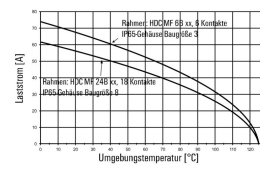
Drawings



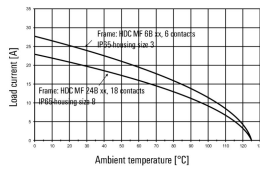
HDC-MHX 3-Module im IP65-Gehäuse,  
 Leiter H07V-K1.5:



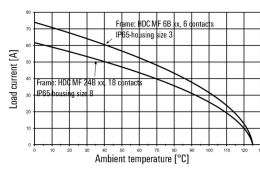
HDC-MHX 3-Module im IP65-Gehäuse,  
 Leiter H07V-K10:



HDC-MHX 3-modules in the IP65-housing,  
 Conductor H07V-K1.5:



HDC-MHX 3-modules in the IP65-housing,  
 Conductor H07V-K10:



## HDC MHX 3 MC

**Weidmüller Interface GmbH & Co. KG**  
 Klingenbergstraße 26  
 D-32758 Detmold  
 Germany

## Accessories

www.weidmueller.com

## Crimp contacts HX

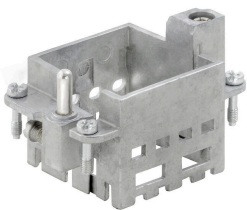


Crimps provide a electrical and mechanical connection between wire and contact that is both secure and reliable. The optimal crimp connection is gas-tight and corrosion-resistant.

## General ordering data

Type	HDC C HX SM1.5AG	Version
Order No.	<a href="#">1002910000</a>	Heavy-duty connectors, Crimp contact, MixMate, Male, Conductor
GTIN (EAN)	4032248697090	cross-section, max.: 1.5, turned, Copper alloy
Qty.	25 ST	
Type	HDC C HX SM2.5AG	Version
Order No.	<a href="#">1002920000</a>	Heavy-duty connectors, Crimp contact, MixMate, Male, Conductor
GTIN (EAN)	4032248697106	cross-section, max.: 2.5, turned, Copper alloy
Qty.	25 ST	
Type	HDC C HX SM4.0AG	Version
Order No.	<a href="#">1002930000</a>	Heavy-duty connectors, Crimp contact, MixMate, Male, Conductor
GTIN (EAN)	4032248697212	cross-section, max.: 4, turned, Copper alloy
Qty.	25 ST	
Type	HDC C HX SM6.0AG	Version
Order No.	<a href="#">1002940000</a>	Heavy-duty connectors, Crimp contact, MixMate, Male, Conductor
GTIN (EAN)	4032248697229	cross-section, max.: 6, turned, Copper alloy
Qty.	25 ST	
Type	HDC C MHX SM10.0AG	Version
Order No.	<a href="#">2494550000</a>	Heavy-duty connectors, Crimp contact, MHX, Male, Conductor cross-
GTIN (EAN)	4050118504521	section, max.: 8, turned, Copper alloy
Qty.	25 ST	

## Standard



## General ordering data

Type	HDC MF 6B AB	Version
Order No.	<a href="#">1428920000</a>	Frame
GTIN (EAN)	4050118233414	
Qty.	1 ST	

## HDC MHX 3 MC

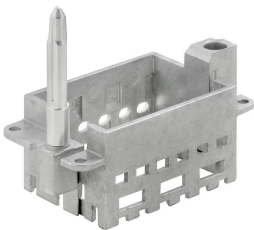
**Weidmüller Interface GmbH & Co. KG**  
 Klingenbergstraße 26  
 D-32758 Detmold  
 Germany

www.weidmueller.com

## Accessories

Type	HDC MF 6B BA	Version
Order No.	<a href="#">1428940000</a>	Frame
GTIN (EAN)	4050118233353	
Qty.	1 ST	
Type	HDC MF 10B AC	Version
Order No.	<a href="#">1428960000</a>	Frame
GTIN (EAN)	4050118233223	
Qty.	1 ST	
Type	HDC MF 10B CA	Version
Order No.	<a href="#">1428980000</a>	Frame
GTIN (EAN)	4050118233278	
Qty.	1 ST	
Type	HDC MF 16B AD	Version
Order No.	<a href="#">1429010000</a>	Frame
GTIN (EAN)	4050118233315	
Qty.	1 ST	
Type	HDC MF 16B DA	Version
Order No.	<a href="#">1429030000</a>	Frame
GTIN (EAN)	4050118233407	
Qty.	1 ST	
Type	HDC MF 24B AF	Version
Order No.	<a href="#">1429050000</a>	Frame
GTIN (EAN)	4050118233285	
Qty.	1 ST	
Type	HDC MF 24B FA	Version
Order No.	<a href="#">1429070000</a>	Frame
GTIN (EAN)	4050118233520	
Qty.	1 ST	

## With long guiding pin



## General ordering data

Type	HDC MFGL 10B AC	Version
Order No.	<a href="#">2736990000</a>	Frame
GTIN (EAN)	4050118823042	
Qty.	1 ST	
Type	HDC MFGL 6B AB	Version
Order No.	<a href="#">2736970000</a>	Frame
GTIN (EAN)	4050118823035	
Qty.	1 ST	

## HDC MHX 3 MC

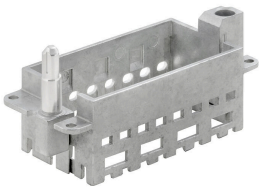
**Weidmüller Interface GmbH & Co. KG**  
 Klingenbergstraße 26  
 D-32758 Detmold  
 Germany

www.weidmueller.com

## Accessories

Type	HDC MFGL 24B FA	Version	
Order No.	<a href="#">2737040000</a>	Frame	
GTIN (EAN)	4050118823097		
Qty.	1 ST		

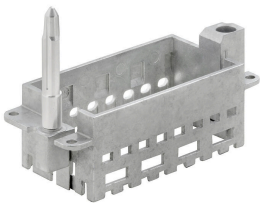
### With short guiding pin



### General ordering data

Type	HDC MFGL 24B FA	Version	
Order No.	<a href="#">2737040000</a>	Frame	
GTIN (EAN)	4050118823097		
Qty.	1 ST		
Type	HDC MFGL 16B DA	Version	
Order No.	<a href="#">2736940000</a>	Frame	
GTIN (EAN)	4050118823004		
Qty.	1 ST		
Type	HDC MFGL 24B AF	Version	
Order No.	<a href="#">2736950000</a>	Frame	
GTIN (EAN)	4050118823011		
Qty.	1 ST		

### With long guiding pin



### General ordering data

Type	HDC MFGL 16B DA	Version	
Order No.	<a href="#">2737020000</a>	Frame	
GTIN (EAN)	4050118823073		
Qty.	1 ST		

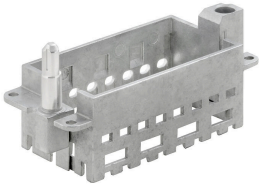
## HDC MHX 3 MC

**Weidmüller Interface GmbH & Co. KG**  
Klingenbergstraße 26  
D-32758 Detmold  
Germany

[www.weidmueller.com](http://www.weidmueller.com)

## Accessories

### With short guiding pin

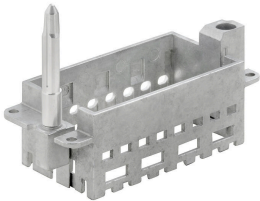


#### General ordering data

Type	HDC MFGS 16B AD
Order No.	<a href="#">2736930000</a>
GTIN (EAN)	4050118822298
Qty.	1 ST

Version
Frame

### With long guiding pin

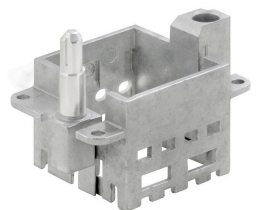


#### General ordering data

Type	HDC MFGL 16B AD
Order No.	<a href="#">2737010000</a>
GTIN (EAN)	4050118823066
Qty.	1 ST

Version
Frame

### With short guiding pin



#### General ordering data

Type	HDC MFGL 6B AB
Order No.	<a href="#">2736890000</a>
GTIN (EAN)	4050118822250
Qty.	1 ST

Version
Frame

## HDC MHX 3 MC

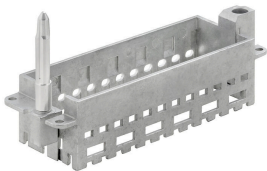
**Weidmüller Interface GmbH & Co. KG**  
 Klingenbergstraße 26  
 D-32758 Detmold  
 Germany

www.weidmueller.com

## Accessories

Type	HDC MFGS 24B FA	Version
Order No.	<a href="#">2736960000</a>	Frame
GTIN (EAN)	4050118823028	
Qty.	1 ST	
Type	HDC MFGS 10B AC	Version
Order No.	<a href="#">2736910000</a>	Frame
GTIN (EAN)	4050118822274	
Qty.	1 ST	

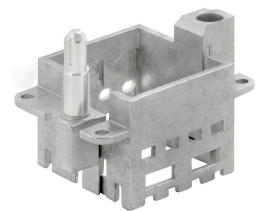
### With long guiding pin



### General ordering data

Type	HDC MFGL 24B AF	Version
Order No.	<a href="#">2737030000</a>	Frame
GTIN (EAN)	4050118823080	
Qty.	1 ST	
Type	HDC MFGL 10B CA	Version
Order No.	<a href="#">2737000000</a>	Frame
GTIN (EAN)	4050118823059	
Qty.	1 ST	

### With short guiding pin



### General ordering data

Type	HDC MFGL 6B BA	Version
Order No.	<a href="#">2736900000</a>	Frame
GTIN (EAN)	4050118822267	
Qty.	1 ST	
Type	HDC MFGL 10B CA	Version
Order No.	<a href="#">2736920000</a>	Frame
GTIN (EAN)	4050118822281	
Qty.	1 ST	

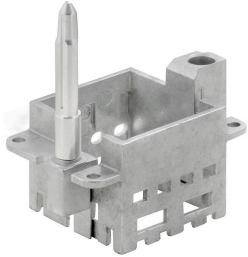
## HDC MHX 3 MC

**Weidmüller Interface GmbH & Co. KG**  
Klingenbergstraße 26  
D-32758 Detmold  
Germany

## Accessories

[www.weidmueller.com](http://www.weidmueller.com)

### With long guiding pin



### General ordering data

Type	HDC MFGL 6B BA	Version	
Order No.	<a href="#">2736980000</a>	Frame	
GTIN (EAN)	4050118822908		
Qty.	1 ST		

## HDC MHX 3 MC

**Weidmüller Interface GmbH & Co. KG**  
 Klingenbergstraße 26  
 D-32758 Detmold  
 Germany

## Counterpart

[www.weidmueller.com](http://www.weidmueller.com)

### Electrical modules



#### Flexible

The four module sizes make for individual plug solutions that save a huge amount of space. The smaller pitch translates into an optimised design too.

### General ordering data

Type	HDC MHX 3 FC	Version	
Order No.	<a href="#">1429350000</a>	Power module, 690 V, 40 A, Number of poles: 3, Crimp connection,	
GTIN (EAN)	4050118233476	Female, Required plug-in slots: 1	
Qty.	1 ST		