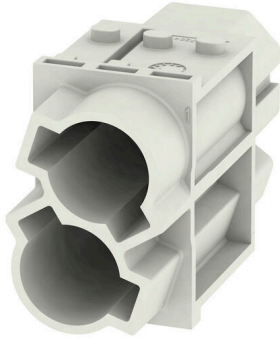


HDC MHP 100 FC**Weidmüller Interface GmbH & Co. KG**

Klingenbergstraße 26

D-32758 Detmold

Germany

www.weidmueller.com**Flexible**

The four module sizes make for individual plug solutions that save a huge amount of space. The smaller pitch translates into an optimised design too.

General ordering data

Version	Power module, 1000 V, 100 A, Number of poles: 2, Crimp connection, Female, Required plug-in slots: 1.5
Order No.	1429080000
Type	HDC MHP 100 FC
GTIN (EAN)	4050118233513
Qty.	1 items

HDC MHP 100 FC

Weidmüller Interface GmbH & Co. KG
 Klingenbergstraße 26
 D-32758 Detmold
 Germany

www.weidmueller.com

Technical data

Approvals

Approvals



ROHS	Conform
UL File Number Search	UL Website
Certificate No. (cURus)	E92202

Dimensions and weights

Depth	34 mm	Depth (inches)	1.3386 inch
Height	50.9 mm	Height (inches)	2.0039 inch
Width	21.85 mm	Width (inches)	0.8602 inch
Net weight	14.16 g		

Temperatures

Limit temperature	-40 °C ... 125 °C
-------------------	-------------------

Environmental Product Compliance

RoHS Compliance Status	Compliant without exemption
REACH SVHC	Potassium perfluorobutane sulfonate 29420-49-3
SCIP	1609748e-c278-4c9b-b3d1-e6215d2988cd

General data

Number of poles	2	
UL 94 flammability rating	V-0	
Insulation resistance	1012 Ω	
Plugging cycles	≥ 500	
Type	Female	
Surge voltage category	III	
Pollution severity	3	
Basic material	Polycarbonate, glass fibre reinforced	
Series	ModuPlug	
Rated voltage (DIN EN 61984)	1000 V	
Rated voltage according to UL/CSA	600 V	
Rated impulse voltage (DIN EN 61984)	8 kV	
Rated current (DIN EN 61984)	100 A	
Rated current (UR)	Wire connection cross section AWG	AWG 2
	Rated current	164 A
	Wire connection cross section AWG	AWG 4
	Rated current	114 A
	Wire connection cross section AWG	AWG 6
	Rated current	99 A
Rated current (cUR)	Wire connection cross section AWG	AWG 8
	Rated current	73 A
	Wire connection cross section AWG	AWG 2
	Rated current	83 A
	Wire connection cross section AWG	AWG 4
	Rated current	57 A
Rated current (cUR)	Wire connection cross section AWG	AWG 6
	Rated current	50 A
	Wire connection cross section AWG	AWG 8
	Rated current	50 A

HDC MHP 100 FC

Weidmüller Interface GmbH & Co. KG
 Klingenbergstraße 26
 D-32758 Detmold
 Germany

www.weidmueller.com

Technical data

Required plug-in slots	Rated current	38 A
	1.5	

PE connection data

Connection type PE	Screw connection via module frame
--------------------	-----------------------------------

Version

Type of connection	Crimp connection	Conductor cross-section, max.	35 mm ²
Conductor cross-section, min.	10 mm ²		

Classifications

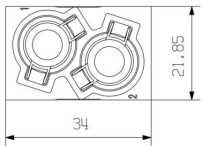
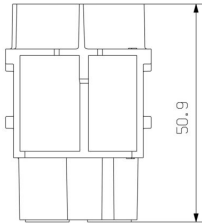
ETIM 8.0	EC000438	ETIM 9.0	EC000438
ETIM 10.0	EC000438	ECLASS 14.0	27-44-02-17
ECLASS 15.0	27-44-02-17		

HDC MHP 100 FC

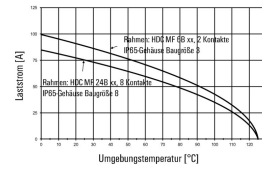
Weidmüller Interface GmbH & Co. KG
 Klingenbergstraße 26
 D-32758 Detmold
 Germany

Drawings

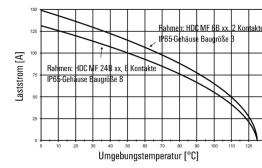
www.weidmueller.com



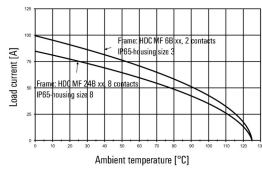
HDC-MHP100-Module im IP65-Gehäuse,
 Leiter H07V-K10:



HDC-MHP100-Module im IP65-Gehäuse,
 Leiter H07V-K35:



HDC-MHP100-modules in the IP65-housing,
 Conductor H07V-K10:



HDC-MHP100-modules in the IP65-housing,
 Conductor H07V-K35:

