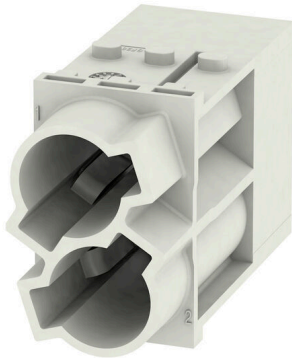


HDC MHP 100 MC

Weidmüller Interface GmbH & Co. KG
Klingenbergstraße 26
D-32758 Detmold
Germany

www.weidmueller.com



Flexible

The four module sizes make for individual plug solutions that save a huge amount of space. The smaller pitch translates into an optimised design too.

General ordering data

Version	Power module, 1000 V, 100 A, Number of poles: 2, Crimp connection, Male, Required plug-in slots: 1.5
Order No.	1429060000
Type	HDC MHP 100 MC
GTIN (EAN)	4050118233292
Qty.	1 items

HDC MHP 100 MC

Weidmüller Interface GmbH & Co. KG
Klingenbergstraße 26
D-32758 Detmold
Germany

www.weidmueller.com

Technical data

Approvals

Approvals



ROHS Conform

UL File Number Search [UL Website](#)

Certificate No. (cURus) E92202

Dimensions and weights

Depth	34 mm	Depth (inches)	1.3386 inch
Height	50.4 mm	Height (inches)	1.9842 inch
Width	21.85 mm	Width (inches)	0.8602 inch
Net weight	12.94 g		

Temperatures

Limit temperature -40 °C ... 125 °C

Environmental Product Compliance

RoHS Compliance Status	Compliant without exemption
REACH SVHC	Potassium perfluorobutane sulfonate 29420-49-3
SCIP	1609748e-c278-4c9b-b3d1-e6215d2988cd

General data

Number of poles	2	
UL 94 flammability rating	V-0	
Insulation resistance	1012 Ω	
Plugging cycles	≥ 500	
Type	Male	
Surge voltage category	III	
Pollution severity	3	
Basic material	Polycarbonate, glass fibre reinforced	
Series	ModuPlug	
Rated voltage (DIN EN 61984)	1000 V	
Rated voltage according to UL/CSA	600 V	
Rated impulse voltage (DIN EN 61984)	8 kV	
Rated current (DIN EN 61984)	100 A	
Rated current (UR)	Wire connection cross section AWG	AWG 2
	Rated current	164 A
Rated current (cUR)	Wire connection cross section AWG	AWG 4
	Rated current	114 A
	Wire connection cross section AWG	AWG 6
	Rated current	99 A
	Wire connection cross section AWG	AWG 8
	Rated current	73 A
Required plug-in slots	1.5	

PE connection data

Connection type PE Screw connection via module frame

HDC MHP 100 MC

Weidmüller Interface GmbH & Co. KG
Klingenbergstraße 26
D-32758 Detmold
Germany

www.weidmueller.com

Technical data**Version**

Type of connection	Crimp connection	Conductor cross-section, max.	35 mm ²
Conductor cross-section, min.	10 mm ²		

Classifications

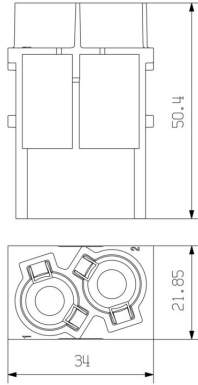
ETIM 8.0	EC000438	ETIM 9.0	EC000438
ETIM 10.0	EC000438	ECLASS 14.0	27-44-02-17
ECLASS 15.0	27-44-02-17		

HDC MHP 100 MC

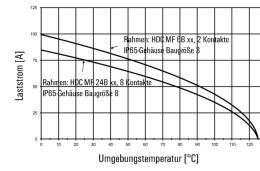
Weidmüller Interface GmbH & Co. KG
 Klingenbergstraße 26
 D-32758 Detmold
 Germany

Drawings

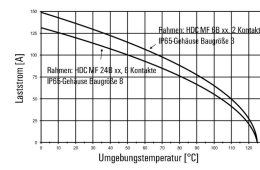
www.weidmueller.com



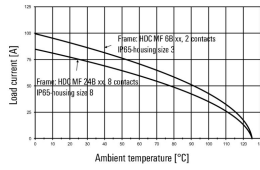
HDC-MHP100-Module im IP65-Gehäuse,
 Leiter H07V-K10:



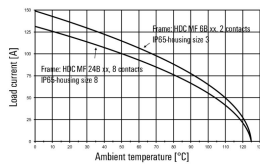
HDC-MHP100-Module im IP65-Gehäuse,
 Leiter H07V-K35:



HDC-MHP100-modules in the IP65-housing,
 Conductor H07V-K10:



HDC-MHP100-modules in the IP65-housing,
 Conductor H07V-K35:



HDC MHP 100 MC

Weidmüller Interface GmbH & Co. KG
 Klingenbergstraße 26
 D-32758 Detmold
 Germany

www.weidmueller.com

Accessories

100 A crimp contacts



Crimps provide a electrical and mechanical connection between wire and contact that is both secure and reliable. The optimal crimp connection is gas-tight and corrosion-resistant.

General ordering data

Type	HDC MHP100 M 10	Version
Order No.	1435750000	Male, silver, 10 - 10 mm ²
GTIN (EAN)	4050118240566	
Qty.	10 ST	
Type	HDC MHP100 M 16	Version
Order No.	1435760000	Male, silver, 16 - 16 mm ²
GTIN (EAN)	4050118240689	
Qty.	10 ST	
Type	HDC MHP100 M 25	Version
Order No.	1435770000	Male, silver, 25 - 25 mm ²
GTIN (EAN)	4050118240573	
Qty.	10 ST	
Type	HDC MHP100 M 35	Version
Order No.	1435780000	Male, silver, 35 - 35 mm ²
GTIN (EAN)	4050118240672	
Qty.	10 ST	

Miscellaneous



In addition to heavy-duty connectors, RockStar® includes the appropriate accessories for effective, functional and safe system cabling; e.g. coding systems, shield clamps, cover plates and replacement seals

General ordering data

Type	HDC MHP100 REMOVAL TOOL	Version
Order No.	1480380000	ModuPlug, Contact Removal Tool
GTIN (EAN)	4050118288933	
Qty.	1 ST	

HDC MHP 100 MC

Weidmüller Interface GmbH & Co. KG
Klingenbergstraße 26
D-32758 Detmold
Germany

www.weidmueller.com

Counterpart

Electrical modules



Flexible

The four module sizes make for individual plug solutions that save a huge amount of space. The smaller pitch translates into an optimised design too.

General ordering data

Type	HDC MHP 100 FC	Version	
Order No.	1429080000	Power module, 1000 V, 100 A, Number of poles: 2, Crimp connection, Female, Required plug-in slots: 1.5	
GTIN (EAN)	4050118233513		
Qty.	1 ST		