

HDC MDU**Weidmüller Interface GmbH & Co. KG**

Klingenbergstraße 26

D-32758 Detmold

Germany

www.weidmueller.com

**Flexible**

The four module sizes make for individual plug solutions that save a huge amount of space. The smaller pitch translates into an optimised design too.

General ordering data

Version	Dummy module, Number of poles: 0, Without contacts, Required plug-in slots: 0.5
Order No.	1429040000
Type	HDC MDU
GTIN (EAN)	4050118233421
Qty.	1 items

HDC MDU

Weidmüller Interface GmbH & Co. KG
 Klingenbergstraße 26
 D-32758 Detmold
 Germany

www.weidmueller.com

Technical data

Approvals

ROHS	Conform
------	---------

Dimensions and weights

Depth	34 mm	Depth (inches)	1.3386 inch
Height	20.6 mm	Height (inches)	0.811 inch
Width	7.15 mm	Width (inches)	0.2815 inch
Net weight	2.58 g		

Temperatures

Limit temperature	-40 °C ... 125 °C
-------------------	-------------------

Environmental Product Compliance

RoHS Compliance Status	Compliant without exemption
REACH SVHC	Potassium perfluorobutane sulfonate 29420-49-3
SCIP	1609748e-c278-4c9b-b3d1-e6215d2988cd

General data

Number of poles	0	UL 94 flammability rating	V-0
Plugging cycles	≥ 500	Type	Without contacts
Pollution severity	3	Basic material	Polycarbonate, glass fibre reinforced
Series	ModuPlug	Required plug-in slots	0.5

Classifications

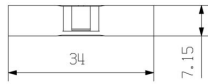
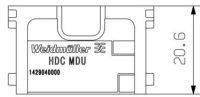
ETIM 8.0	EC000438	ETIM 9.0	EC000438
ETIM 10.0	EC000438	ECLASS 14.0	27-44-02-17
ECLASS 15.0	27-44-02-17		

HDC MDU

Weidmüller Interface GmbH & Co. KG
Klingenbergstraße 26
D-32758 Detmold
Germany

Drawings

www.weidmueller.com



HDC MDU

Weidmüller Interface GmbH & Co. KG
Klingenbergstraße 26
D-32758 Detmold
Germany

Counterpart

www.weidmueller.com

Electrical modules



Flexible

The four module sizes make for individual plug solutions that save a huge amount of space. The smaller pitch translates into an optimised design too.

General ordering data

Type	HDC MDU	Version	
Order No.	1429040000	Dummy module, Number of poles: 0, Without contacts, Required	
GTIN (EAN)	4050118233421	plug-in slots: 0.5	
Qty.	1 ST		