

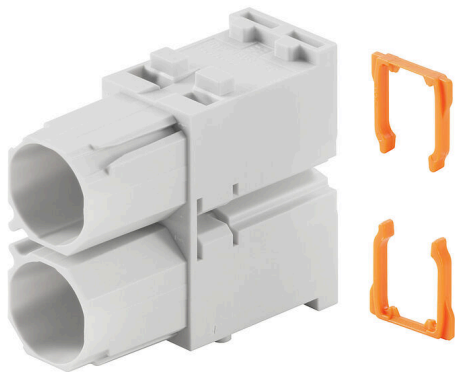
**HDC MBUS 2 FC****Weidmüller Interface GmbH & Co. KG**

Klingenbergstraße 26

D-32758 Detmold

Germany

www.weidmueller.com

**Flexible**

The four module sizes make for individual plug solutions that save a huge amount of space. The smaller pitch translates into an optimised design too.

**General ordering data**

Version	Data module, 0 V, 0 A, Number of poles: 2, Crimp connection, Female, Required plug-in slots: 1
Order No.	<a href="#">1429020000</a>
Type	HDC MBUS 2 FC
GTIN (EAN)	4050118233506
Qty.	1 items

## HDC MBUS 2 FC

**Weidmüller Interface GmbH & Co. KG**  
 Klingenbergstraße 26  
 D-32758 Detmold  
 Germany

www.weidmueller.com

## Technical data

## Approvals

Approvals



ROHS Conform

## Dimensions and weights

Depth	34 mm	Depth (inches)	1.3386 inch
Height	41.2 mm	Height (inches)	1.622 inch
Width	14.5 mm	Width (inches)	0.5709 inch
Net weight	6.71 g		

## Temperatures

Limit temperature -40 °C ... 125 °C

## Environmental Product Compliance

RoHS Compliance Status	Compliant without exemption
REACH SVHC	Potassium perfluorobutane sulfonate 29420-49-3
SCIP	1609748e-c278-4c9b-b3d1-e6215d2988cd

## General data

Number of poles	2	UL 94 flammability rating	V-0
Insulation resistance	1012 Ω	Plugging cycles	≥ 500
Type	Female	Surge voltage category	III
Pollution severity	3	Basic material	Polycarbonate, glass fibre reinforced
Series	ModuPlug	Rated voltage (DIN EN 61984)	0 V
Rated impulse voltage (DIN EN 61984)	0 kV	Rated current (DIN EN 61984)	0 A
Required plug-in slots	1		

## PE connection data

Connection type PE Screw connection via module frame

## Version

Type of connection Crimp connection

## Classifications

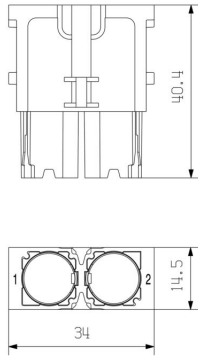
ETIM 8.0	EC000438	ETIM 9.0	EC000438
ETIM 10.0	EC000438	ECLASS 14.0	27-44-02-18
ECLASS 15.0	27-44-02-18		

**HDC MBUS 2 FC**

**Weidmüller Interface GmbH & Co. KG**  
Klingenbergstraße 26  
D-32758 Detmold  
Germany

**Drawings**

[www.weidmueller.com](http://www.weidmueller.com)



## HDC MBUS 2 FC

**Weidmüller Interface GmbH & Co. KG**  
 Klingenbergstraße 26  
 D-32758 Detmold  
 Germany

www.weidmueller.com

## Accessories

### Data use



Comprehensive portfolio for flexible on site data cabling: from dedicated tools to Cat.#5 D coded and Cat.#6 X coded connectors, as well as robust shielding sleeves. These components enable reliable, field assembled data connections – ideal for industrial applications, quick installation, and maximum flexibility.

### General ordering data

Type	HDC MBUS8 X6A MC	Version
Order No.	<a href="#">2427900000</a>	Insert
GTIN (EAN)	4050118436976	
Qty.	2 ST	
Type	HDC MBUS8 X6A FC	Version
Order No.	<a href="#">2427910000</a>	Insert
GTIN (EAN)	4050118437102	
Qty.	2 ST	
Type	HDC MBUS4 D5E MC	Version
Order No.	<a href="#">2427920000</a>	Accessories
GTIN (EAN)	4050118437119	
Qty.	2 ST	
Type	HDC MBUS4 D5E FC	Version
Order No.	<a href="#">2427930000</a>	Accessories
GTIN (EAN)	4050118437010	
Qty.	2 ST	

### Miscellaneous



In addition to heavy-duty connectors, RockStar® includes the appropriate accessories for effective, functional and safe system cabling; e.g. coding systems, shield clamps, cover plates and replacement seals

### General ordering data

Type	HDC MBUS 2 MCLIP	Version
Order No.	<a href="#">1989290000</a>	Fixing clip
GTIN (EAN)	4050118373745	
Qty.	2 ST	
Type	HDC MBUS 2 PCLIP	Version
Order No.	<a href="#">1989300000</a>	Fixing clip
GTIN (EAN)	4050118373752	
Qty.	10 ST	

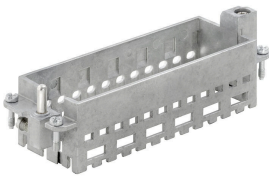
## HDC MBUS 2 FC

**Weidmüller Interface GmbH & Co. KG**  
 Klingenbergstraße 26  
 D-32758 Detmold  
 Germany

## Accessories

www.weidmueller.com

## Standard



## Simple

The innovative sliding frame has two defined lock-in positions for opening and closing. This enables simple and tool-free module assembly.

## General ordering data

Type	HDC MF 24B AF	Version
Order No.	<a href="#">1429050000</a>	Frame
GTIN (EAN)	4050118233285	
Qty.	1 ST	
Type	HDC MF 24B FA	Version
Order No.	<a href="#">1429070000</a>	Frame
GTIN (EAN)	4050118233520	
Qty.	1 ST	
Type	HDC MF 16B AD	Version
Order No.	<a href="#">1429010000</a>	Frame
GTIN (EAN)	4050118233315	
Qty.	1 ST	
Type	HDC MF 16B DA	Version
Order No.	<a href="#">1429030000</a>	Frame
GTIN (EAN)	4050118233407	
Qty.	1 ST	
Type	HDC MF 10B AC	Version
Order No.	<a href="#">1428960000</a>	Frame
GTIN (EAN)	4050118233223	
Qty.	1 ST	
Type	HDC MF 10B CA	Version
Order No.	<a href="#">1428980000</a>	Frame
GTIN (EAN)	4050118233278	
Qty.	1 ST	
Type	HDC MF 6B AB	Version
Order No.	<a href="#">1428920000</a>	Frame
GTIN (EAN)	4050118233414	
Qty.	1 ST	
Type	HDC MF 6B BA	Version
Order No.	<a href="#">1428940000</a>	Frame
GTIN (EAN)	4050118233353	
Qty.	1 ST	

## HDC MBUS 2 FC

**Weidmüller Interface GmbH & Co. KG**  
 Klingenbergstraße 26  
 D-32758 Detmold  
 Germany

## Accessories

www.weidmueller.com

### With long guiding pin



#### Simple

The innovative sliding frame has two defined lock-in positions for opening and closing. This enables simple and tool-free module assembly.

### General ordering data

Type	HDC MFGL 16B AD	Version
Order No.	<a href="#">2737010000</a>	Frame
GTIN (EAN)	4050118823066	
Qty.	1 ST	
Type	HDC MFGL 16B DA	Version
Order No.	<a href="#">2737020000</a>	Frame
GTIN (EAN)	4050118823073	
Qty.	1 ST	
Type	HDC MFGL 24B AF	Version
Order No.	<a href="#">2737030000</a>	Frame
GTIN (EAN)	4050118823080	
Qty.	1 ST	
Type	HDC MFGL 24B FA	Version
Order No.	<a href="#">2737040000</a>	Frame
GTIN (EAN)	4050118823097	
Qty.	1 ST	
Type	HDC MFGL 10B AC	Version
Order No.	<a href="#">2736990000</a>	Frame
GTIN (EAN)	4050118823042	
Qty.	1 ST	
Type	HDC MFGL 10B CA	Version
Order No.	<a href="#">2737000000</a>	Frame
GTIN (EAN)	4050118823059	
Qty.	1 ST	
Type	HDC MFGL 6B AB	Version
Order No.	<a href="#">2736970000</a>	Frame
GTIN (EAN)	4050118823035	
Qty.	1 ST	
Type	HDC MFGL 6B BA	Version
Order No.	<a href="#">2736980000</a>	Frame
GTIN (EAN)	4050118822908	
Qty.	1 ST	

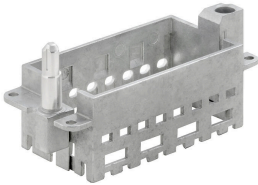
**HDC MBUS 2 FC**

**Weidmüller Interface GmbH & Co. KG**  
 Klingenbergstraße 26  
 D-32758 Detmold  
 Germany

**Accessories**

www.weidmueller.com

**With short guiding pin**



**Simple**

The innovative sliding frame has two defined lock-in positions for opening and closing. This enables simple and tool-free module assembly.

**General ordering data**

Type	HDC MFGS 16B AD	Version
Order No.	<a href="#">2736930000</a>	Frame
GTIN (EAN)	4050118822298	
Qty.	1 ST	
Type	HDC MFGS 16B DA	Version
Order No.	<a href="#">2736940000</a>	Frame
GTIN (EAN)	4050118823004	
Qty.	1 ST	
Type	HDC MFGS 24B AF	Version
Order No.	<a href="#">2736950000</a>	Frame
GTIN (EAN)	4050118823011	
Qty.	1 ST	
Type	HDC MFGS 24B FA	Version
Order No.	<a href="#">2736960000</a>	Frame
GTIN (EAN)	4050118823028	
Qty.	1 ST	
Type	HDC MFGS 10B AC	Version
Order No.	<a href="#">2736910000</a>	Frame
GTIN (EAN)	4050118822274	
Qty.	1 ST	
Type	HDC MFGS 10B CA	Version
Order No.	<a href="#">2736920000</a>	Frame
GTIN (EAN)	4050118822281	
Qty.	1 ST	
Type	HDC MFGS 6B AB	Version
Order No.	<a href="#">2736890000</a>	Frame
GTIN (EAN)	4050118822250	
Qty.	1 ST	
Type	HDC MFGS 6B BA	Version
Order No.	<a href="#">2736900000</a>	Frame
GTIN (EAN)	4050118822267	
Qty.	1 ST	

## HDC MBUS 2 FC

Weidmüller Interface GmbH &amp; Co. KG

Klingenbergstraße 26

D-32758 Detmold

Germany

www.weidmueller.com

## Accessories

## Pin / open end



## Compact

The two pole bus module accommodates Megabit and Gigabit data inserts and enables the transmission of two lines within a single module. It is highly versatile – suitable for railway cables, industrial cables, drag chain applications, Profibus, and field assembly data connectors.

## General ordering data

Type	HDC XX5E01 MOXXXXX-0100	Version
Order No.	<a href="#">2003890100</a>	Data use
GTIN (EAN)	4050118464481	
Qty.	1 ST	
Type	HDC XX5E02 MOXXXXX-0100	Version
Order No.	<a href="#">2003900100</a>	
GTIN (EAN)	4050118523102	
Qty.	1 ST	

## Pin / pin



Robust data cables designed for use in railway applications. The Cat#6 X coded and Cat#5 D coded variants provide reliable and interference resistant data transmission for demanding onboard and trackside environments. Ideal for applications with high mechanical stress and for ensuring consistent performance under harsh conditions.

## General ordering data

Type	HDC XX5E02 MMSXXXX-0100	Version
Order No.	<a href="#">2659960100</a>	
GTIN (EAN)	4050118673784	
Qty.	1 ST	

## Pin / pin M12



Robust data cables designed for use in railway applications. The Cat#6 X coded and Cat#5 D coded variants provide reliable and interference resistant data transmission for demanding onboard and trackside environments. Ideal for applications with high mechanical stress and for ensuring consistent performance under harsh conditions.

## HDC MBUS 2 FC

**Weidmüller Interface GmbH & Co. KG**  
 Klingenbergstraße 26  
 D-32758 Detmold  
 Germany

[www.weidmueller.com](http://www.weidmueller.com)

## Accessories

## General ordering data

Type	HDC XX5E02 MMSM12D-0100	Version	
Order No.	<a href="#">2503750100</a>		
GTIN (EAN)	4050118523553		
Qty.	1 ST		

## Pin / pin RJ45



Robust data cables designed for use in railway applications. The Cat#6 X coded and Cat#5 D coded variants provide reliable and interference resistant data transmission for demanding onboard and trackside environments. Ideal for applications with high mechanical stress and for ensuring consistent performance under harsh conditions.

## General ordering data

Type	HDC XX5E02 MMSRJ45-0100	Version	
Order No.	<a href="#">2503710100</a>		
GTIN (EAN)	4050118523454		
Qty.	1 ST		

## Pin / socket



Robust data cables designed for use in railway applications. The Cat#6 X coded and Cat#5 D coded variants provide reliable and interference resistant data transmission for demanding onboard and trackside environments. Ideal for applications with high mechanical stress and for ensuring consistent performance under harsh conditions.

## General ordering data

Type	HDC XX5E02 MFSXXXX-0100	Version	
Order No.	<a href="#">2503790100</a>		
GTIN (EAN)	4050118523256		
Qty.	1 ST		

## HDC MBUS 2 FC

**Weidmüller Interface GmbH & Co. KG**  
 Klingenbergstraße 26  
 D-32758 Detmold  
 Germany

[www.weidmueller.com](http://www.weidmueller.com)

## Accessories

## Pin / socket M12

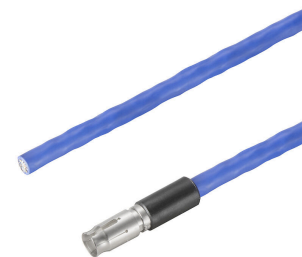


Robust data cables designed for use in railway applications. The Cat#6 X coded and Cat#5 D coded variants provide reliable and interference resistant data transmission for demanding onboard and trackside environments. Ideal for applications with high mechanical stress and for ensuring consistent performance under harsh conditions.

## General ordering data

Type	HDC XX5E02 MFSM12D-0100	Version
Order No.	<a href="#">2503700100</a>	
GTIN (EAN)	4050118523652	
Qty.	1 ST	

## Socket / open end



Robust data cables designed for use in railway applications. The Cat#6 X coded and Cat#5 D coded variants provide reliable and interference resistant data transmission for demanding onboard and trackside environments. Ideal for applications with high mechanical stress and for ensuring consistent performance under harsh conditions.

## General ordering data

Type	HDC XX5E02 FOXXXXX-0100	Version
Order No.	<a href="#">2003930100</a>	
GTIN (EAN)	4050118522952	
Qty.	1 ST	

## Socket / pin M12



Robust data cables designed for use in railway applications. The Cat#6 X coded and Cat#5 D coded variants provide reliable and interference resistant data transmission for demanding onboard and trackside environments. Ideal for applications with high mechanical stress and for ensuring consistent performance under harsh conditions.

## General ordering data

Type	HDC XX5E02 FMSM12D-0100	Version
Order No.	<a href="#">2503760100</a>	
GTIN (EAN)	4050118523508	
Qty.	1 ST	

## HDC MBUS 2 FC

**Weidmüller Interface GmbH & Co. KG**  
 Klingenbergstraße 26  
 D-32758 Detmold  
 Germany

www.weidmueller.com

## Accessories

### Socket / pin RJ45



Robust data cables designed for use in railway applications. The Cat#6 X coded and Cat#5 D coded variants provide reliable and interference resistant data transmission for demanding onboard and trackside environments. Ideal for applications with high mechanical stress and for ensuring consistent performance under harsh conditions.

#### General ordering data

Type	HDC XX5E02 FMSRJ45-0100	Version
Order No.	<a href="#">2503720100</a>	
GTIN (EAN)	4050118523409	
Qty.	1 ST	

### Socket / socket M12



Robust data cables designed for use in railway applications. The Cat#6 X coded and Cat#5 D coded variants provide reliable and interference resistant data transmission for demanding onboard and trackside environments. Ideal for applications with high mechanical stress and for ensuring consistent performance under harsh conditions.

#### General ordering data

Type	HDC XX5E02 FFSM12D-0100	Version
Order No.	<a href="#">2503810100</a>	
GTIN (EAN)	4050118523607	
Qty.	1 ST	

### Pin / open end



Robust data cables designed for use in railway applications. The Cat#6 X coded and Cat#5 D coded variants provide reliable and interference resistant data transmission for demanding onboard and trackside environments. Ideal for applications with high mechanical stress and for ensuring consistent performance under harsh conditions.

#### General ordering data

Type	HDC XX6A01 MOXXXXX-0100	Version
Order No.	<a href="#">2003820100</a>	Data use
GTIN (EAN)	4050118464504	
Qty.	1 ST	

## HDC MBUS 2 FC

**Weidmüller Interface GmbH & Co. KG**  
 Klingenbergstraße 26  
 D-32758 Detmold  
 Germany

[www.weidmueller.com](http://www.weidmueller.com)

## Accessories

## Pin / pin M12



Robust data cables designed for use in railway applications. The Cat#6 X coded and Cat#5 D coded variants provide reliable and interference resistant data transmission for demanding onboard and trackside environments. Ideal for applications with high mechanical stress and for ensuring consistent performance under harsh conditions.

## General ordering data

Type	HDC XX6A01 MMSM12X-0100	Version
Order No.	<a href="#">2451130100</a>	
GTIN (EAN)	4050118485684	
Qty.	1 ST	

## Pin / pin RJ45



Robust data cables designed for use in railway applications. The Cat#6 X coded and Cat#5 D coded variants provide reliable and interference resistant data transmission for demanding onboard and trackside environments. Ideal for applications with high mechanical stress and for ensuring consistent performance under harsh conditions.

## General ordering data

Type	HDC XX6A01 MMSRJ45-0100	Version
Order No.	<a href="#">2451090100</a>	
GTIN (EAN)	4050118468502	
Qty.	1 ST	

## Pin / socket



Robust data cables designed for use in railway applications. The Cat#6 X coded and Cat#5 D coded variants provide reliable and interference resistant data transmission for demanding onboard and trackside environments. Ideal for applications with high mechanical stress and for ensuring consistent performance under harsh conditions.

## HDC MBUS 2 FC

**Weidmüller Interface GmbH & Co. KG**  
 Klingenbergstraße 26  
 D-32758 Detmold  
 Germany

[www.weidmueller.com](http://www.weidmueller.com)

## Accessories

## General ordering data

Type	HDC XX6A01 MFSXXX-0100	Version
Order No.	<a href="#">2453540100</a>	Data use
GTIN (EAN)	4050118467529	
Qty.	1 ST	

## Pin/socket M12

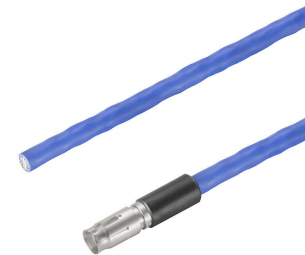


Robust data cables designed for use in railway applications. The Cat#6 X coded and Cat#5 D coded variants provide reliable and interference resistant data transmission for demanding onboard and trackside environments. Ideal for applications with high mechanical stress and for ensuring consistent performance under harsh conditions.

## General ordering data

Type	HDC XX6A01 MFSM12X-0100	Version
Order No.	<a href="#">2450440100</a>	Data use
GTIN (EAN)	4050118464528	
Qty.	1 ST	

## Socket / open end



Robust data cables designed for use in railway applications. The Cat#6 X coded and Cat#5 D coded variants provide reliable and interference resistant data transmission for demanding onboard and trackside environments. Ideal for applications with high mechanical stress and for ensuring consistent performance under harsh conditions.

## General ordering data

Type	HDC XX6A01 FOXXXX-0100	Version
Order No.	<a href="#">2003850100</a>	Data use
GTIN (EAN)	4050118464498	
Qty.	1 ST	

## HDC MBUS 2 FC

**Weidmüller Interface GmbH & Co. KG**  
 Klingenbergstraße 26  
 D-32758 Detmold  
 Germany

[www.weidmueller.com](http://www.weidmueller.com)

## Accessories

## Socket / pin M12



Robust data cables designed for use in railway applications. The Cat#6 X coded and Cat#5 D coded variants provide reliable and interference resistant data transmission for demanding onboard and trackside environments. Ideal for applications with high mechanical stress and for ensuring consistent performance under harsh conditions.

## General ordering data

Type	HDC XX6A01 FMSM12X-0100	Version
Order No.	<a href="#">2451140100</a>	
GTIN (EAN)	4050118485677	
Qty.	1 ST	

## Socket / pin RJ45



Robust data cables designed for use in railway applications. The Cat#6 X coded and Cat#5 D coded variants provide reliable and interference resistant data transmission for demanding onboard and trackside environments. Ideal for applications with high mechanical stress and for ensuring consistent performance under harsh conditions.

## General ordering data

Type	HDC XX6A01 FMSRJ45-0100	Version
Order No.	<a href="#">2451100100</a>	
GTIN (EAN)	4050118468519	
Qty.	1 ST	

## Socket / socket M12



Robust data cables designed for use in railway applications. The Cat#6 X coded and Cat#5 D coded variants provide reliable and interference resistant data transmission for demanding onboard and trackside environments. Ideal for applications with high mechanical stress and for ensuring consistent performance under harsh conditions.

## General ordering data

Type	HDC XX6A01 FFSM12X-0100	Version
Order No.	<a href="#">2503550100</a>	
GTIN (EAN)	4050118520996	
Qty.	1 ST	

## HDC MBUS 2 FC

**Weidmüller Interface GmbH & Co. KG**  
 Klingenbergstraße 26  
 D-32758 Detmold  
 Germany

[www.weidmueller.com](http://www.weidmueller.com)

## Accessories

## pin/pin



Robust data cables designed for use in railway applications. The Cat#6 X coded and Cat#5 D coded variants provide reliable and interference resistant data transmission for demanding onboard and trackside environments. Ideal for applications with high mechanical stress and for ensuring consistent performance under harsh conditions.

## General ordering data

Type	HDC XX6A01 MMSXXX-0100	Version
Order No.	<a href="#">2659970100</a>	
GTIN (EAN)	4050118673630	
Qty.	1 ST	

## Pin / pin M12



**Compact**  
 The two pole bus module accommodates Megabit and Gigabit data inserts and enables the transmission of two lines within a single module. It is highly versatile – suitable for railway cables, industrial cables, drag chain applications, Profibus, and field assembly data connectors.

## General ordering data

Type	HDC XX5E01	Version
	MMSM12D-0100	
Order No.	<a href="#">2451110100</a>	
GTIN (EAN)	4050118485660	
Qty.	1 ST	

## Pin / pin RJ45



**Compact**  
 The two pole bus module accommodates Megabit and Gigabit data inserts and enables the transmission of two lines within a single module. It is highly versatile – suitable for railway cables, industrial cables, drag chain applications, Profibus, and field assembly data connectors.

## HDC MBUS 2 FC

**Weidmüller Interface GmbH & Co. KG**  
 Klingenbergstraße 26  
 D-32758 Detmold  
 Germany

www.weidmueller.com

## Accessories

### General ordering data

Type	HDC XX5E01 MMSRJ45-0100	Version
Order No.	<a href="#">2450490100</a>	
GTIN (EAN)	4050118467987	
Qty.	1 ST	

### Pin / socket



**Compact**  
 The two pole bus module accommodates Megabit and Gigabit data inserts and enables the transmission of two lines within a single module. It is highly versatile – suitable for railway cables, industrial cables, drag chain applications, Profibus, and field assembly data connectors.

### General ordering data

Type	HDC XX5E01 MFSXXX-0100	Version
Order No.	<a href="#">2453550100</a>	Data use
GTIN (EAN)	4050118467284	
Qty.	1 ST	

### Pin/socket M12



**Compact**  
 The two pole bus module accommodates Megabit and Gigabit data inserts and enables the transmission of two lines within a single module. It is highly versatile – suitable for railway cables, industrial cables, drag chain applications, Profibus, and field assembly data connectors.

### General ordering data

Type	HDC XX5E01 MFSM12D-0100	Version
Order No.	<a href="#">2450450100</a>	Data use
GTIN (EAN)	4050118465242	
Qty.	1 ST	

## HDC MBUS 2 FC

Weidmüller Interface GmbH &amp; Co. KG

Klingenbergstraße 26

D-32758 Detmold

Germany

www.weidmueller.com

## Accessories

## Socket / open end



## Compact

The two pole bus module accommodates Megabit and Gigabit data inserts and enables the transmission of two lines within a single module. It is highly versatile – suitable for railway cables, industrial cables, drag chain applications, Profibus, and field assembly data connectors.

## General ordering data

Type	HDC XX5E01 FOXXXX-0100	Version	
Order No.	<a href="#">2003920100</a>	Data use	
GTIN (EAN)	4050118464450		
Qty.	1 ST		

## Socket / pin M12



## Compact

The two pole bus module accommodates Megabit and Gigabit data inserts and enables the transmission of two lines within a single module. It is highly versatile – suitable for railway cables, industrial cables, drag chain applications, Profibus, and field assembly data connectors.

## General ordering data

Type	HDC XX5E01 FMSM12D-0100	Version	
Order No.	<a href="#">2451120100</a>		
GTIN (EAN)	4050118485653		
Qty.	1 ST		

## Socket / pin RJ45



## Compact

The two pole bus module accommodates Megabit and Gigabit data inserts and enables the transmission of two lines within a single module. It is highly versatile – suitable for railway cables, industrial cables, drag chain applications, Profibus, and field assembly data connectors.

## General ordering data

Type	HDC XX5E01 FMSRJ45-0100	Version	
Order No.	<a href="#">2451080100</a>		
GTIN (EAN)	4050118467994		
Qty.	1 ST		

## HDC MBUS 2 FC

Weidmüller Interface GmbH &amp; Co. KG

Klingenbergstraße 26

D-32758 Detmold

Germany

www.weidmueller.com

## Accessories

## Socket / socket



## Compact

The two pole bus module accommodates Megabit and Gigabit data inserts and enables the transmission of two lines within a single module. It is highly versatile – suitable for railway cables, industrial cables, drag chain applications, Profibus, and field assembly data connectors.

## General ordering data

Type	HDC XX5E01 FFSXXX-0100	Version
Order No.	<a href="#">2652760100</a>	
GTIN (EAN)	4050118660708	
Qty.	1 ST	

## Socket / socket M12



## Compact

The two pole bus module accommodates Megabit and Gigabit data inserts and enables the transmission of two lines within a single module. It is highly versatile – suitable for railway cables, industrial cables, drag chain applications, Profibus, and field assembly data connectors.

## General ordering data

Type	HDC XX5E01 FFSM12D-0100	Version
Order No.	<a href="#">2503540100</a>	
GTIN (EAN)	4050118522099	
Qty.	1 ST	

## Pin / open end



## Compact

The two pole bus module accommodates Megabit and Gigabit data inserts and enables the transmission of two lines within a single module. It is highly versatile – suitable for railway cables, industrial cables, drag chain applications, Profibus, and field assembly data connectors.

## General ordering data

Type	HDC XX6A02 MOXXXXX-0100	Version
Order No.	<a href="#">2003830100</a>	
GTIN (EAN)	4050118522365	
Qty.	1 ST	

## HDC MBUS 2 FC

**Weidmüller Interface GmbH & Co. KG**  
 Klingenbergstraße 26  
 D-32758 Detmold  
 Germany

[www.weidmueller.com](http://www.weidmueller.com)

## Accessories

### Pin / pin M12



#### Compact

The two pole bus module accommodates Megabit and Gigabit data inserts and enables the transmission of two lines within a single module. It is highly versatile – suitable for railway cables, industrial cables, drag chain applications, Profibus, and field assembly data connectors.

#### General ordering data

Type	HDC XX6A02	Version
	MMSM12X-0100	
Order No.	<a href="#">2503770100</a>	
GTIN (EAN)	4050118522815	
Qty.	1 ST	

### Pin / pin RJ45



#### Compact

The two pole bus module accommodates Megabit and Gigabit data inserts and enables the transmission of two lines within a single module. It is highly versatile – suitable for railway cables, industrial cables, drag chain applications, Profibus, and field assembly data connectors.

#### General ordering data

Type	HDC XX6A02 MMSRJ45-0100	Version
Order No.	<a href="#">2503730100</a>	
GTIN (EAN)	4050118522716	
Qty.	1 ST	

### Pin / socket



#### Compact

The two pole bus module accommodates Megabit and Gigabit data inserts and enables the transmission of two lines within a single module. It is highly versatile – suitable for railway cables, industrial cables, drag chain applications, Profibus, and field assembly data connectors.

## HDC MBUS 2 FC

**Weidmüller Interface GmbH & Co. KG**  
 Klingenbergstraße 26  
 D-32758 Detmold  
 Germany

www.weidmueller.com

## Accessories

## General ordering data

Type	HDC XX6A02 MFSXXX-0100	Version
Order No.	<a href="#">2503800100</a>	
GTIN (EAN)	4050118522518	
Qty.	1 ST	

## Pin/socket M12



## Compact

The two pole bus module accommodates Megabit and Gigabit data inserts and enables the transmission of two lines within a single module. It is highly versatile – suitable for railway cables, industrial cables, drag chain applications, Profibus, and field assembly data connectors.

## General ordering data

Type	HDC XX6A02 MFSM12X-0100	Version
Order No.	<a href="#">2503690100</a>	
GTIN (EAN)	4050118522914	
Qty.	1 ST	

## Socket / open end



## Compact

The two pole bus module accommodates Megabit and Gigabit data inserts and enables the transmission of two lines within a single module. It is highly versatile – suitable for railway cables, industrial cables, drag chain applications, Profibus, and field assembly data connectors.

## General ordering data

Type	HDC XX6A02 FOXXXX-0100	Version
Order No.	<a href="#">2003860100</a>	
GTIN (EAN)	4050118522211	
Qty.	1 ST	

## HDC MBUS 2 FC

Weidmüller Interface GmbH &amp; Co. KG

Klingenbergstraße 26

D-32758 Detmold

Germany

www.weidmueller.com

## Accessories

## Socket / pin M12



## Compact

The two pole bus module accommodates Megabit and Gigabit data inserts and enables the transmission of two lines within a single module. It is highly versatile – suitable for railway cables, industrial cables, drag chain applications, Profibus, and field assembly data connectors.

## General ordering data

Type	HDC XX6A02 FMSM12X-0100	Version
Order No.	<a href="#">2503780100</a>	
GTIN (EAN)	4050118522761	
Qty.	1 ST	

## Socket / pin RJ45



## Compact

The two pole bus module accommodates Megabit and Gigabit data inserts and enables the transmission of two lines within a single module. It is highly versatile – suitable for railway cables, industrial cables, drag chain applications, Profibus, and field assembly data connectors.

## General ordering data

Type	HDC XX6A02 FMSRJ45-0100	Version
Order No.	<a href="#">2503740100</a>	
GTIN (EAN)	4050118522662	
Qty.	1 ST	

## Socket / socket



## Compact

The two pole bus module accommodates Megabit and Gigabit data inserts and enables the transmission of two lines within a single module. It is highly versatile – suitable for railway cables, industrial cables, drag chain applications, Profibus, and field assembly data connectors.

## General ordering data

Type	HDC XX6A02 FFSXXXX-0100	Version
Order No.	<a href="#">2634700100</a>	
GTIN (EAN)	4050118650112	
Qty.	1 ST	

## HDC MBUS 2 FC

**Weidmüller Interface GmbH & Co. KG**  
 Klingenbergstraße 26  
 D-32758 Detmold  
 Germany

[www.weidmueller.com](http://www.weidmueller.com)

## Accessories

### Socket / socket M12



#### Compact

The two pole bus module accommodates Megabit and Gigabit data inserts and enables the transmission of two lines within a single module. It is highly versatile – suitable for railway cables, industrial cables, drag chain applications, Profibus, and field assembly data connectors.

#### General ordering data

Type	HDC XX6A02 FFSM12X-0100	Version	
Order No.	<a href="#">2503820100</a>		
GTIN (EAN)	4050118522860		
Qty.	1 ST		

### PROFIBUS cable



The pre-assembled PROFIBUS cable is the ideal solution for fast, reliable, and interference free data transmission in industrial automation environments. It is perfectly suited for applications in mechanical engineering, plant engineering, and process automation.

#### General ordering data

Type	HDC XXPB01 MOXXXXX-0100	Version	
Order No.	<a href="#">2755350100</a>		
GTIN (EAN)	4099987305990		
Qty.	1 ST		

## HDC MBUS 2 FC

**Weidmüller Interface GmbH & Co. KG**  
Klingenbergstraße 26  
D-32758 Detmold  
Germany

[www.weidmueller.com](http://www.weidmueller.com)

## Counterpart

### Electrical modules



#### Flexible

The four module sizes make for individual plug solutions that save a huge amount of space. The smaller pitch translates into an optimised design too.

### General ordering data

Type	HDC MBUS 2 MC	Version	
Order No.	<a href="#">1428990000</a>	Data module, 0 V, 0 A, Number of poles: 2, Crimp connection, Male,	
GTIN (EAN)	4050118233346	Required plug-in slots: 1	
Qty.	1 ST		