

## HDC MHX 4P MC

**Weidmüller Interface GmbH & Co. KG**  
Klingenbergstraße 26  
D-32758 Detmold  
Germany

[www.weidmueller.com](http://www.weidmueller.com)



### Flexible

The four module sizes make for individual plug solutions that save a huge amount of space. The smaller pitch translates into an optimised design too.

### General ordering data

Version	Power module, 830 V, 40 A, Number of poles: 4, Crimp connection, Pin, Required plug-in slots: 1
Order No.	<a href="#">1428950000</a>
Type	HDC MHX 4P MC
GTIN (EAN)	4050118233339
Qty.	1 items

## HDC MHX 4P MC

Weidmüller Interface GmbH & Co. KG  
Klingenbergstraße 26  
D-32758 Detmold  
Germany

www.weidmueller.com

## Technical data

## Approvals

Approvals



ROHS Conform

UL File Number Search [UL Website](#)

Certificate No. (cURus) E92202

## Dimensions and weights

Depth	34 mm	Depth (inches)	1.3386 inch
Height	48.1 mm	Height (inches)	1.8937 inch
Width	14.5 mm	Width (inches)	0.5709 inch
Net weight	12.36 g		

## Temperatures

Limit temperature -40 °C ... 125 °C

## Environmental Product Compliance

RoHS Compliance Status	Compliant without exemption
REACH SVHC	Potassium perfluorobutane sulfonate 29420-49-3
SCIP	1609748e-c278-4c9b-b3d1-e6215d2988cd

## General data

Number of poles	4	UL 94 flammability rating	V-0
Insulation resistance	1012 Ω	Plugging cycles	≥ 500
Type	Pin	Surge voltage category	III
Pollution severity	3	Basic material	Polycarbonate, glass fibre reinforced
Series	ModuPlug	Rated voltage (DIN EN 61984)	830 V
Rated voltage according to UL/CSA	600 V	Rated impulse voltage (DIN EN 61984)	8 kV
Rated current (DIN EN 61984)	40 A	Required plug-in slots	1

## PE connection data

Connection type PE	Screw connection via module frame
--------------------	-----------------------------------

## Version

Wire connection cross section AWG, max.	AWG 10	Stripping length, rated connection	8 mm
Type of connection	Crimp connection	Wire connection cross section AWG, min.	AWG 16
Conductor cross-section, max.	6 mm <sup>2</sup>	Conductor cross-section, min.	1.5 mm <sup>2</sup>

## Classifications

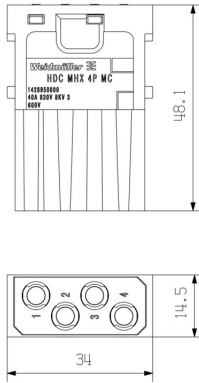
ETIM 8.0	EC000438	ETIM 9.0	EC000438
ETIM 10.0	EC000438	ECLASS 14.0	27-44-02-17
ECLASS 15.0	27-44-02-17		

HDC MHX 4P MC

Weidmüller Interface GmbH & Co. KG  
 Klingenbergstraße 26  
 D-32758 Detmold  
 Germany

Drawings

www.weidmueller.com



HDC-ModuPlug - HDC-MHX 4P - Module im IP65-Gehäuse / H07V-K6,0 / 8 bzw. 24 Pole

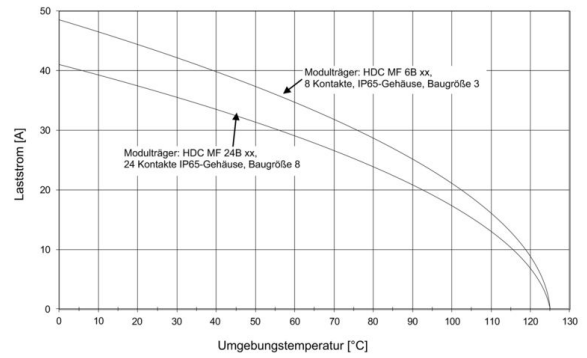


Abb. 006-04-03. Deratingkurve HDC-MHX 4P-Module im IP65-Gehäuse, Leiter H07V-K6,0

HDC-ModuPlug - HDC-MHX 4P - Module im IP65-Gehäuse / H07V-K1,5 / 8 bzw. 24 Pole

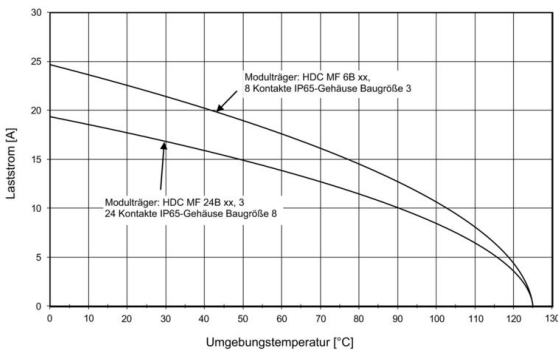


Abb. 006-04-02. Deratingkurve HDC-MHX 4P-Module im IP65-Gehäuse, Leiter H05V-K0,5

HDC-ModuPlug - HDC-MHX 4P - modules in the IP65-housing / H07V-K1,5 / 8 or. 24 poles

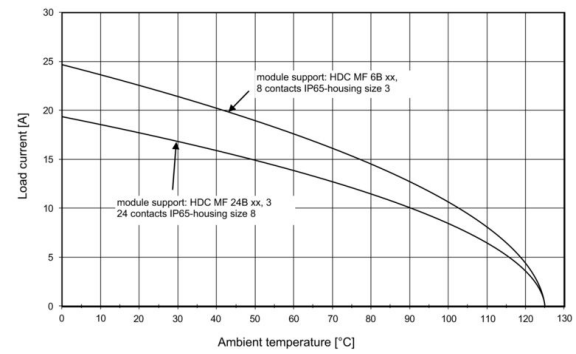


Illustration 006-04-02. derating curve HDC-MHX 4P-modules in the IP65-housing, conductor H05V-K0,5

HDC-ModuPlug - HDC-MHX 4P - modules in the IP65-housing / H07V-K6,0 / 8 or. 24 poles

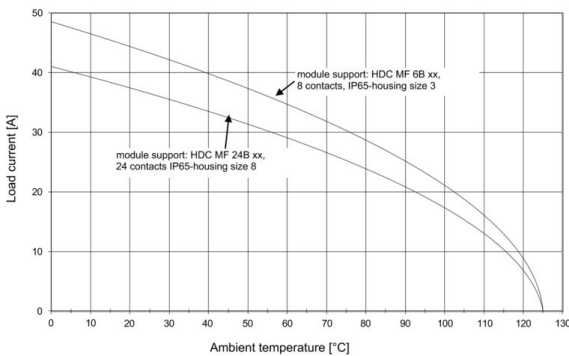


Illustration 006-04-03. derating curve HDC-MHX 4P-modules in the IP65-housing, conductor H07V-K6,0

## HDC MHX 4P MC

**Weidmüller Interface GmbH & Co. KG**  
 Klingenbergstraße 26  
 D-32758 Detmold  
 Germany

www.weidmueller.com

## Accessories

## Crimp contacts HX

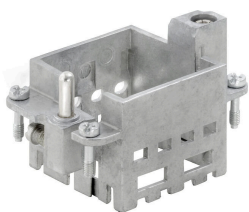


Crimps provide a electrical and mechanical connection between wire and contact that is both secure and reliable. The optimal crimp connection is gas-tight and corrosion-resistant.

## General ordering data

Type	HDC C HX SM1.5AG	Version
Order No.	<a href="#">1002910000</a>	Heavy-duty connectors, Crimp contact, MixMate, Male, Conductor
GTIN (EAN)	4032248697090	cross-section, max.: 1.5, turned, Copper alloy
Qty.	25 ST	
Type	HDC C HX SM2.5AG	Version
Order No.	<a href="#">1002920000</a>	Heavy-duty connectors, Crimp contact, MixMate, Male, Conductor
GTIN (EAN)	4032248697106	cross-section, max.: 2.5, turned, Copper alloy
Qty.	25 ST	
Type	HDC C HX SM4.0AG	Version
Order No.	<a href="#">1002930000</a>	Heavy-duty connectors, Crimp contact, MixMate, Male, Conductor
GTIN (EAN)	4032248697212	cross-section, max.: 4, turned, Copper alloy
Qty.	25 ST	
Type	HDC C HX SM6.0AG	Version
Order No.	<a href="#">1002940000</a>	Heavy-duty connectors, Crimp contact, MixMate, Male, Conductor
GTIN (EAN)	4032248697229	cross-section, max.: 6, turned, Copper alloy
Qty.	25 ST	

## Standard



Simple  
 The innovative sliding frame has two defined lock-in positions for opening and closing. This enables simple and tool-free module assembly.

## General ordering data

Type	HDC MF 6B AB	Version
Order No.	<a href="#">1428920000</a>	Frame
GTIN (EAN)	4050118233414	
Qty.	1 ST	
Type	HDC MF 6B BA	Version
Order No.	<a href="#">1428940000</a>	Frame
GTIN (EAN)	4050118233353	
Qty.	1 ST	

## HDC MHX 4P MC

**Weidmüller Interface GmbH & Co. KG**  
 Klingenbergstraße 26  
 D-32758 Detmold  
 Germany

www.weidmueller.com

## Accessories

Type	HDC MF 10B AC	Version
Order No.	<a href="#">1428960000</a>	Frame
GTIN (EAN)	4050118233223	
Qty.	1 ST	
Type	HDC MF 10B CA	Version
Order No.	<a href="#">1428980000</a>	Frame
GTIN (EAN)	4050118233278	
Qty.	1 ST	
Type	HDC MF 16B AD	Version
Order No.	<a href="#">1429010000</a>	Frame
GTIN (EAN)	4050118233315	
Qty.	1 ST	
Type	HDC MF 16B DA	Version
Order No.	<a href="#">1429030000</a>	Frame
GTIN (EAN)	4050118233407	
Qty.	1 ST	
Type	HDC MF 24B AF	Version
Order No.	<a href="#">1429050000</a>	Frame
GTIN (EAN)	4050118233285	
Qty.	1 ST	
Type	HDC MF 24B FA	Version
Order No.	<a href="#">1429070000</a>	Frame
GTIN (EAN)	4050118233520	
Qty.	1 ST	

## HDC MHX 4P MC

**Weidmüller Interface GmbH & Co. KG**  
Klingenbergstraße 26  
D-32758 Detmold  
Germany

[www.weidmueller.com](http://www.weidmueller.com)

## Counterpart

### Electrical modules



#### Flexible

The four module sizes make for individual plug solutions that save a huge amount of space. The smaller pitch translates into an optimised design too.

### General ordering data

Type	HDC MHX 4P FC	Version	
Order No.	<a href="#">1428970000</a>	Power module, 830 V, 40 A, Number of poles: 4, Crimp connection,	
GTIN (EAN)	4050118233308	Female, Required plug-in slots: 1	
Qty.	1 ST		