

SFX-M 11/60-5 AL

Weidmüller Interface GmbH & Co. KG

Klingenbergstraße 26

D-32758 Detmold

Germany

www.weidmueller.com



MetalliCards are available in aluminium or stainless steel to meet a wide range of labelling requirements. The chrome-coated aluminium tags are the inexpensive alternative for a variety of applications, and in particular, they prove themselves through the deep contrasts of their multi-colour print. In the technologically demanding chemical and process industries, you are on the safe side when using the stainless steel MetalliCard with its outstanding resistance characteristics. Its formats cover the needs of the entire system-identification spectrum. Whether small equipment or type plates, they ensure high-quality marking processes. The MetalliCard also offers optimum installation characteristics. MetalliCards can be used universally thanks to various fixation options: bonding, riveting, with tag holders or rails, or in combination with stainless steel cable ties. A special punching in the SFX-M allows the use of steel cable ties. For custom printing: Please send us a file of our labeling software M-Print PRO or M-Print PRO Online (without installation) for your labeling specifications.

General ordering data

Version	MetalliCard, Conductor and cable markers, 7 - 40 mm, 60 x 11 mm, silver
Order No.	1422560000
Type	SFX-M 11/60-5 AL
GTIN (EAN)	4050118226140
Qty.	50 items

SFX-M 11/60-5 AL

Weidmüller Interface GmbH & Co. KG
 Klingenbergstraße 26
 D-32758 Detmold
 Germany

www.weidmueller.com

Technical data

Approvals

ROHS Conform

Dimensions and weights

Depth	0.8 mm	Depth (inches)	0.0315 inch
Height	60 mm	Height (inches)	2.3622 inch
Width	11 mm	Width (inches)	0.4331 inch
Net weight	1.06 g		

Temperatures

Operating temperature range -55...130 °C

Environmental Product Compliance

RoHS Compliance Status Compliant without exemption
 REACH SVHC No SVHC above 0.1 wt%

General data

Number per sheet	50
Type of printing	neutral
Version	halogen-free
Width	11 mm
Operating temperature range, max.	130 °C
Operating temperature range, min.	-55 °C
Colour	silver
Basic material	Anodized aluminium
Printed characters	without
Number of markers per packaging unit	Form of supply MetalliCard
Size of labelling field	11.2 x 45 mm
Recommended industries	Process, Energy
compatible printer	
Number of markers per combination	1 MetalliCard = Conductor and cable markers
Operating temperature range	-55...130 °C

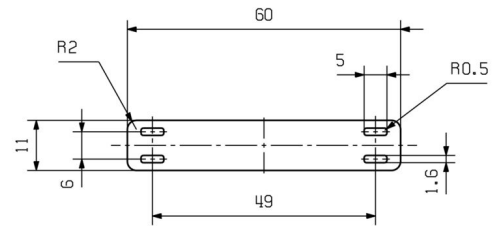
Conductor and cable markers

Conductor cross-section, max.	500 mm ²	Conductor cross-section, min.	16 mm ²
Conductor O.D., max.	40 mm	Conductor O.D., min.	7 mm
Cable tie passage	Flat	Conductor O.D.	7 - 40 mm
Suitable cable tie	Plastic	Cross-section for connected wire	16 - 500 mm ²

Classifications

ETIM 8.0	EC001530	ETIM 9.0	EC001530
ETIM 10.0	EC001530	ECLASS 14.0	27-28-11-02
ECLASS 15.0	27-28-11-02		

Drawings



SFX-M 11/60-5 AL

Weidmüller Interface GmbH & Co. KG

Klingenbergstraße 26

D-32758 Detmold

Germany

Accessories

www.weidmueller.com

Complementary products



General ordering data

Type	PRIMER CC-M	Version	
Order No.	2068020000		
GTIN (EAN)	4050118416534		
Qty.	100 ST		

Inlay



MetalliCards are available in aluminium or stainless steel to meet a wide range of labelling requirements. The chrome-coated aluminium tags are the inexpensive alternative for a variety of applications, and in particular, they prove themselves through the deep contrasts of their multi-colour print. In the technologically demanding chemical and process industries, you are on the safe side when using the stainless steel MetalliCard with its outstanding resistance characteristics. Its formats cover the needs of the entire system-identification spectrum. Whether small equipment or type plates, they ensure high-quality marking processes. The MetalliCard also offers optimum installation characteristics. MetalliCards can be used universally thanks to various fixation options: bonding, riveting, with tag holders or rails, or in combination with stainless steel cable ties. A special punching in the SFX-M allows the use of steel cable ties. For custom printing: Please send us a file of our labeling software M-Print PRO or M-Print PRO Online (without installation) for your labeling specifications.

General ordering data

Type	INLAY SFX-M 11/60	Version	
Order No.	1341110000		
GTIN (EAN)	4050118145601		
Qty.	1 ST		