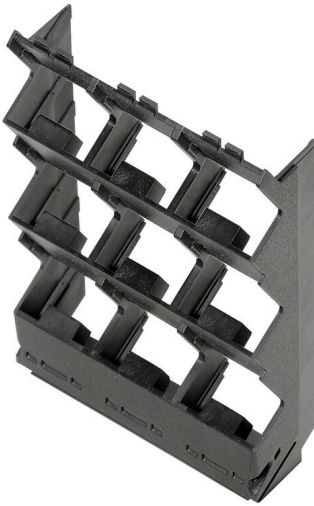


CH20M67 S 3P/3P/3P BK 2010

Weidmüller Interface GmbH & Co. KG
Klingenbergstraße 26
D-32758 Detmold
Germany

www.weidmueller.com

Product image

The side element of the CH20M housing offers you the option of an individual structure that can be flexibly adapted to your needs. A particularly practical advantage is that slots that are not required can simply be closed with covers. This not only ensures a clean and tidy appearance, but also protects against dust and other environmental influences. Take advantage of the versatility of the CH20M housing to design your projects efficiently and according to your ideas!

General ordering data

Version	Side element, OMNIMATE Housing - series CH20M black, Side element, Width: 67 mm
Order No.	1420370000
Type	CH20M67 S 3P/3P/3P BK 2010
GTIN (EAN)	4050118223859
Qty.	8 items

CH20M67 S 3P/3P/3P BK 2010

Weidmüller Interface GmbH & Co. KG
 Klingenbergstraße 26
 D-32758 Detmold
 Germany

www.weidmueller.com

Technical data

Approvals

ROHS	Conform
------	---------

Dimensions and weights

Depth	105.3 mm	Depth (inches)	4.1457 inch
Height	22.8 mm	Height (inches)	0.8976 inch
Width	67 mm	Width (inches)	2.6378 inch
Net weight	17.6 g		

Temperatures

Ambient temperature	-25 °C...85 °C	Operating temperature range	-40...120 °C
Humidity	5 - 93% rel. humidity, Tu = 40°C, no condensation		

Environmental Product Compliance

RoHS Compliance Status	Compliant without exemption
REACH SVHC	No SVHC above 0.1 wt%

Material data

UL 94 flammability rating	V-0	Insulating material	PA 66 GF 30
Insulating material group	I	Surface finish	untreated
Basic material	Plastic	Comparative Tracking Index (CTI)	600 ≤ CTI

General data

Colour	black	Protection degree	IP20 in installed state
Colour chart (similar)	RAL 9011	Information regarding whole assembly, see referenced articles	CH20M67 B BK/OR 2010
Encapsulation option	No		

Component properties

Cut out as preparation for functional portNo integrated		Number of poles, max.	36
Number of ventilation openings	0	Number of slots for female plugs	9
Number of connection levels	3		

Classifications

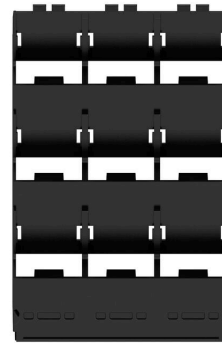
ETIM 8.0	EC001031	ETIM 9.0	EC001031
ETIM 10.0	EC001031	ECLASS 14.0	27-19-06-02
ECLASS 15.0	27-19-06-02		

Drawings

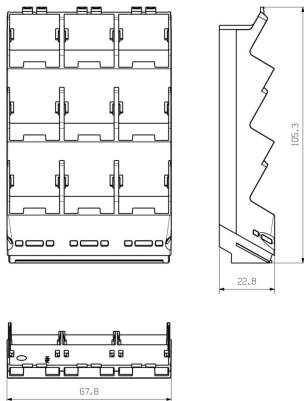
Product image



Product image



Dimensioned drawing



CH20M67 S 3P/3P/3P BK 2010

Weidmüller Interface GmbH & Co. KG
 Klingenbergstraße 26
 D-32758 Detmold
 Germany

www.weidmueller.com

Accessories

CH20M AD SHL 5.00/04 - Side element cover for CH20M22, CH20M45, CH20M67



Future-proof solutions for industrial electronics for mounting in the control cabinet

Electronichousings are crucial for the integration of electronic assemblies in the control cabinet. They protect sensitive components and ensure reliable connections. Thanks to high-quality materials, they offer long-term solutions for industrial applications.

Your advantages:

Flexibility: Scalable solutions for different requirements

Safety: Robust design to protect your electronics

Efficiency: Simple installation and optimized connection technology

Housing solutions for every application:

Our portfolio includes modular housings (e.g. CH20M), small housings and profile housings designed for control, signal conversion and safety applications. These housings offer customizable designs, easy mounting and high connection capacity.

Customization:

In addition to standard solutions, we offer customization in design, color and printing. The Weidmüller Configurator enables individual design.

Our service:

We offer expert advice and technical support for your projects. In the download area you will find CAD data, data sheets and installation instructions for efficient integration.

General ordering data

Type	CH20M AD SHL 5.00/04 BK...	Version
Order No.	1221310000	Hood, OMNIMATE Housing - series CH20M black, Side element
GTIN (EAN)	4050118004830	cover, Width: 22.5 mm
Qty.	50 ST	