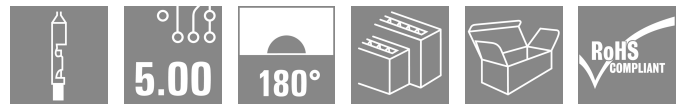
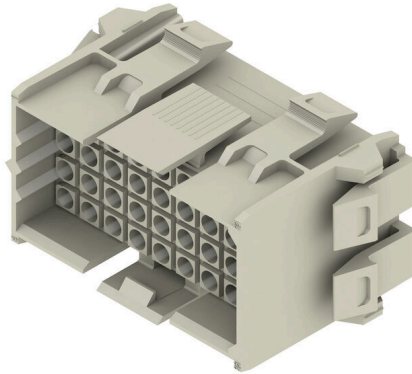


## RSV1,6 S36 GR BX

**Weidmüller Interface GmbH & Co. KG**  
 Klingenbergstraße 26  
 D-32758 Detmold  
 Germany

www.weidmueller.com

### Product image



Rectangular plug-in connector for use with crimp contacts. Can be used as universal coupling, but also with the PCB variations. The crimp contacts guarantee a high connection density. CS 1.6 or CB 1.6 contacts can be used here. The plug-in connectors can be coded and locked to the mating connector. Supplied in cardboard box.

### General ordering data

Version	PCB plug-in connector, male plug, 5.00 mm, Number of poles: 36, 180°, Crimp connection, Clamping range, max. : 3.31 mm <sup>2</sup> , Box
Order No.	<a href="#">1419100000</a>
Type	RSV1,6 S36 GR BX
GTIN (EAN)	4008190044244
Qty.	10 items
Product data	IEC: 630 V / 17 A UL: 600 V / 10 A / AWG 26 - AWG 12
Packaging	Box

## RSV1,6 S36 GR BX

Weidmüller Interface GmbH &amp; Co. KG

Klingenbergstraße 26

D-32758 Detmold

Germany

www.weidmueller.com

## Technical data

## Approvals

Approvals



ROHS Conform

UL File Number Search [UL Website](#)

Certificate No. (UR) E92202

## Dimensions and weights

Depth	33 mm	Depth (inches)	1.2992 inch
Height	27 mm	Height (inches)	1.063 inch
Width	61 mm	Width (inches)	2.4016 inch
Net weight	17.3 g		

## Environmental Product Compliance

RoHS Compliance Status Compliant without exemption

REACH SVHC No SVHC above 0.1 wt%

## System Parameters

Product family	OMNIMATE Signal - series RSV	Type of connection	Field connection
Wire connection method	Crimp connection	Pitch in mm (P)	5.00 mm
Pitch in inches (P)	0.197 "	Conductor outlet direction	180°
Number of poles	36	L1 in mm	40.00 mm
L1 in inches	1.575 "	Number of rows	4
Pin series quantity	9	Touch-safe protection acc. to DIN VDE 57 106	Safe from finger touch, plugged
Touch-safe protection acc. to DIN VDE 0470	IP20 plugged	Can be coded	Yes
Stripping length	4 mm	Plugging cycles	25
Plugging force/pole, max.	9 N	Pulling force/pole, max.	18 N

## Material data

Insulating material	PA 66/6	Colour	Pebble grey
Colour chart (similar)	RAL 7032	Insulating material group	I
Comparative Tracking Index (CTI)	≥ 600	Moisture Level (MSL)	
UL 94 flammability rating	V-0	Contact material	Cu-alloy
Storage temperature, min.	-40 °C	Storage temperature, max.	70 °C
Operating temperature, min.	-50 °C	Operating temperature, max.	100 °C
Temperature range, installation, min.	-25 °C	Temperature range, installation, max.	100 °C

## Conductors suitable for connection

Clamping range, min.	0.13 mm <sup>2</sup>	Clamping range, max.	3.31 mm <sup>2</sup>
Flexible, min. H05(07) V-K	0.2 mm <sup>2</sup>	Flexible, max. H05(07) V-K	2.5 mm <sup>2</sup>

## RSV1,6 S36 GR BX

**Weidmüller Interface GmbH & Co. KG**  
 Klingenbergstraße 26  
 D-32758 Detmold  
 Germany

www.weidmueller.com

## Technical data

### Rated data acc. to IEC

tested acc. to standard	IEC 60664-1, IEC 61984	Rated current, min. number of poles (Tu=20°C)	17 A
Rated current, max. number of poles (Tu=20°C)	13 A	Rated current, min. number of poles (Tu=40°C)	15 A
Rated current, max. number of poles (Tu=40°C)	11.5 A	Rated voltage for surge voltage class / pollution degree II/2	630 V
Rated voltage for surge voltage class / pollution degree III/2	400 V	Rated voltage for surge voltage class / pollution degree III/3	250 V
Rated impulse voltage for surge voltage class/ pollution degree II/2	4 kV	Rated impulse voltage for surge voltage class/ pollution degree III/2	4 kV
Rated impulse voltage for surge voltage class/ contamination degree III/3	4 kV	Short-time withstand current resistance	3 x 1s with 120 A

### Rated data acc. to CSA

Institute (CSA)	CSA	Certificate No. (CSA)	53975-13
Rated voltage (Use group C / CSA)	600 V	Rated current (Use group C / CSA)	13 A
Wire cross-section, AWG, min.	AWG 26	Wire cross-section, AWG, max.	AWG 12
Reference to approval values	Specifications are maximum values, details - see approval certificate.		

### Rated data acc. to UL 1059

Institute (UR)	UR	Certificate No. (UR)	E92202
Reference to approval values	Specifications are maximum values, details - see approval certificate.		

### Packing

Packaging	Box	VPE length	177.00 mm
VPE width	123.00 mm	VPE height	51.00 mm

### Important note

IPC conformity	Conformity: The products are developed, manufactured and delivered according international recognized standards and norms and comply with the assured properties in the data sheet resp. fulfill decorative properties in accordance with IPC-A-610 "Class 2". Further claims on the products can be evaluated on request.		
Notes	<ul style="list-style-type: none"> <li>• Additional variants on request</li> <li>• Rated current related to rated cross-section &amp; min. No. of poles.</li> <li>• Spacing between rows: see hole layout</li> <li>• Rated cross-section depends on crimp contact used.</li> <li>• Rated data refer only to the component itself. Clearance and creepage distances to other components are to be designed in accordance with the relevant application standards.</li> <li>• Max. outer diameter of the cable (with insulation): 3.5 mm</li> <li>• Long term storage of the product with average temperature of 50 °C and maximum humidity 70%, 36 months</li> </ul>		

### Classifications

ETIM 8.0	EC002638	ETIM 9.0	EC002638
ETIM 10.0	EC002638	ECLASS 14.0	27-46-02-02
ECLASS 15.0	27-46-02-02		

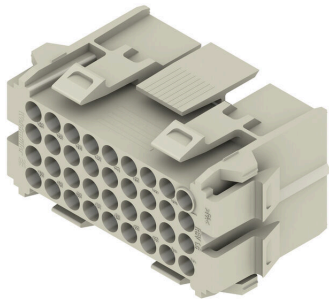
RSV1,6 S36 GR BX

Weidmüller Interface GmbH & Co. KG  
 Klingenbergstraße 26  
 D-32758 Detmold  
 Germany

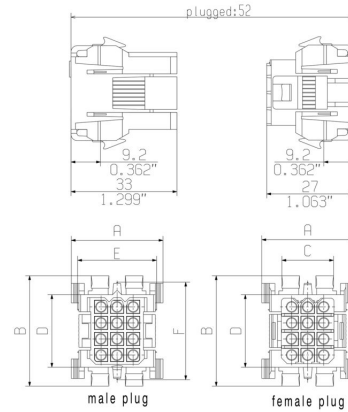
Drawings

www.weidmueller.com

Product image



Dimensional drawing



Dimensional drawing



poles	dimension male plug / female plug					mounting cut-out	
	A	B	C	D	E	a	b
4	23,0	25,0	10,8	12,0	17,8	20,3	18,1
6	23,0	30,0	10,8	17,6	17,8	25,1	18,1
8	29,0	30,0	16,1	17,6	23,8	25,1	24,0
12	29,0	35,0	16,1	22,6	23,8	30,0	24,0
18	29,0	46,0	16,1	33,0	23,8	40,5	24,0
24	33,0	46,0	20,6	33,0	27,8	40,5	28,3
36	33,0	61,0	20,6	48,0	27,8	55,5	28,3

Graph



## RSV1,6 S36 GR BX

Weidmüller Interface GmbH &amp; Co. KG

Klingenbergstraße 26

D-32758 Detmold

Germany

www.weidmueller.com

## Accessories

## Adapters for rail mounting



Clip on and use!

From the circuit board in the control cabinet: snap-on or mounting feet form the link between plug-in connectors and terminal rails.

Compatible with all standard sizes: TS 15 or TS 35.

Combination foot or variations available.

The quick alternative to screw connections: unbeatable ease of installation and service.

The mounting foot for the terminal rails allows the universal use of pluggable connection systems on the module, the enclosure and the control cabinet and avoids patchwork solutions.

## General ordering data

Type	RSV1,6 RF36/35X15 SW	Version
Order No.	<a href="#">1690170000</a>	PCB plug-in connector, Accessories, Clip-in foot, black, Number of
GTIN (EAN)	4008190863036	poles: 36
Qty.	10 ST	
Type	RSV1,6 RF36/35X7.5 SW	Version
Order No.	<a href="#">1582970000</a>	PCB plug-in connector, Accessories, Clip-in foot, black, Number of
GTIN (EAN)	4008190132163	poles: 36
Qty.	10 ST	

## Strain reliefs



For frequent load changes: the "trailer coupling" for plug-in connectors.

The strain relief can do more than just relieve the strain on conductors:

Simply clip onto the plug and

- bundle conductors
- guide cables
- use as a connection and disconnection aid

No damage to the connecting points, clear, tidy wiring and easy to handle.

User advantages: permanent heavy-duty connections for harsh industrial environments and convenient operation ensure improved system availability.

## General ordering data

Type	RSV1,6 ZE36 BK BX	Version
Order No.	<a href="#">1563000000</a>	PCB plug-in connector, Accessories, Strain relief, black, Number of
GTIN (EAN)	4008190187538	poles: 36
Qty.	10 ST	

## RSV1,6 S36 GR BX

**Weidmüller Interface GmbH & Co. KG**  
 Klingenbergstraße 26  
 D-32758 Detmold  
 Germany

www.weidmueller.com

## Accessories

## Coding elements



Only connects what is supposed to be connected: the right connection at the right place.  
 Coding elements and locking devices clearly assign connecting elements during the manufacturing process and operation  
 The coding elements and locking devices are inserted prior to assembly or during the cable assembly phase. The Weidmüller alternative: configure online using the variant configurator to precode prior to delivery. Incorrect assembly on the circuit board and incorrect plugging of connecting elements is no longer possible. The advantage: no troubleshooting during manufacture and no operational errors by the user.

## General ordering data

Type	RSV1,6 KO	Version	
Order No.	<a href="#">1567430000</a>	PCB plug-in connector, Accessories, Coding element, black, Number of poles: 1	
GTIN (EAN)	4008190169756		
Qty.	50 ST		

## Pin contact standard



For a reliable contact - CB/CS crimp contact. The combination of RSV housings and Weidmüller's crimp contacts enable custom adaptations to the specific requirements of your applications.  
 The following product options are available depending on the system:

- Safe centring of the contacts using the three-segment pin tips
- High contact reliability using four defined contact points
- Locking clasp in the cantilever spring for a secure mount of the contacts in the housing
- Pin contacts with two lengths to implement leading-pin contacts
- Up to 100 plugging cycles (tin version)
- Up to 500 plugging cycles (gold version)

The appropriate high-quality tools from Weidmüller guarantee professional processing.

## General ordering data

Type	CS1,6E14-12 AU,75 I3,5	Version	
Order No.	<a href="#">1428600000</a>	PCB plug-in connector, Crimp contact, Individual contact, Pin - standard, Gold-plated, Max. clamping range : 2.5 mm <sup>2</sup>	
GTIN (EAN)	4008190078867		
Qty.	250 ST		
Type	CS1,6E14-12 AU,75 I4,2	Version	
Order No.	<a href="#">1582290000</a>	PCB plug-in connector, Crimp contact, Individual contact, Pin - standard, Gold-plated, Max. clamping range : 2.5 mm <sup>2</sup>	
GTIN (EAN)	4008190015244		
Qty.	250 ST		
Type	CS1,6E14-12 SN I3,5	Version	
Order No.	<a href="#">1429600000</a>	PCB plug-in connector, Crimp contact, Individual contact, Pin - standard, tinned, Max. clamping range : 2.5 mm <sup>2</sup>	
GTIN (EAN)	4008190030728		
Qty.	250 ST		

## RSV1,6 S36 GR BX

**Weidmüller Interface GmbH & Co. KG**  
 Klingenbergstraße 26  
 D-32758 Detmold  
 Germany

www.weidmueller.com

## Accessories

Type	CS1,6E14-12 SN I4,2	Version
Order No.	<a href="#">1582310000</a>	PCB plug-in connector, Crimp contact, Individual contact, Pin –
GTIN (EAN)	4008190032975	standard, tinned, Max. clamping range : 2.5 mm <sup>2</sup>
Qty.	250 ST	
Type	CS1,6E18-16 AU,75 I2,5	Version
Order No.	<a href="#">1426600000</a>	PCB plug-in connector, Crimp contact, Individual contact, Pin –
GTIN (EAN)	4008190182861	standard, Gold-plated, Max. clamping range : 1.5 mm <sup>2</sup>
Qty.	250 ST	
Type	CS1,6E18-16 AU,75 I3,5	Version
Order No.	<a href="#">1582250000</a>	PCB plug-in connector, Crimp contact, Individual contact, Pin –
GTIN (EAN)	4008190135614	standard, Gold-plated, Max. clamping range : 1.5 mm <sup>2</sup>
Qty.	250 ST	
Type	CS1,6E18-16 SN I2,5	Version
Order No.	<a href="#">1427600000</a>	PCB plug-in connector, Crimp contact, Individual contact, Pin –
GTIN (EAN)	4008190090654	standard, tinned, Max. clamping range : 1.5 mm <sup>2</sup>
Qty.	250 ST	
Type	CS1,6E18-16 SN I3,5	Version
Order No.	<a href="#">1582270000</a>	PCB plug-in connector, Crimp contact, Individual contact, Pin –
GTIN (EAN)	4008190126049	standard, tinned, Max. clamping range : 1.5 mm <sup>2</sup>
Qty.	250 ST	
Type	CS1,6E22-20 AU,75 I1,8	Version
Order No.	<a href="#">1422600000</a>	PCB plug-in connector, Crimp contact, Individual contact, Pin –
GTIN (EAN)	4008190090463	standard, Gold-plated, Max. clamping range : 0.5 mm <sup>2</sup>
Qty.	250 ST	
Type	CS1,6E22-20 AU,75 I2,5	Version
Order No.	<a href="#">1424600000</a>	PCB plug-in connector, Crimp contact, Individual contact, Pin –
GTIN (EAN)	4008190186562	standard, Gold-plated, Max. clamping range : 0.5 mm <sup>2</sup>
Qty.	250 ST	
Type	CS1,6E22-20 SN I1,8	Version
Order No.	<a href="#">1423600000</a>	PCB plug-in connector, Crimp contact, Individual contact, Pin –
GTIN (EAN)	4008190061876	standard, tinned, Max. clamping range : 0.5 mm <sup>2</sup>
Qty.	250 ST	
Type	CS1,6E22-20 SN I2,5	Version
Order No.	<a href="#">1425600000</a>	PCB plug-in connector, Crimp contact, Individual contact, Pin –
GTIN (EAN)	4008190048884	standard, tinned, Max. clamping range : 0.5 mm <sup>2</sup>
Qty.	250 ST	
Type	CS1,6E26-24 AU,75 I1,4	Version
Order No.	<a href="#">1420600000</a>	PCB plug-in connector, Crimp contact, Individual contact, Pin –
GTIN (EAN)	4008190082772	standard, Gold-plated, Max. clamping range : 0.25 mm <sup>2</sup>
Qty.	250 ST	
Type	CS1,6E26-24 SN I1,4	Version
Order No.	<a href="#">1421600000</a>	PCB plug-in connector, Crimp contact, Individual contact, Pin –
GTIN (EAN)	4008190009939	standard, tinned, Max. clamping range : 0.25 mm <sup>2</sup>
Qty.	250 ST	
Type	CS1,6R14-12 AU,75 I3,5	Version
Order No.	<a href="#">1428500000</a>	PCB plug-in connector, Crimp contact, Reel packaged, Pin – standard,
GTIN (EAN)	4008190023201	Gold-plated, Max. clamping range : 2.5 mm <sup>2</sup>
Qty.	3000 ST	
Type	CS1,6R14-12 AU,75 I4,2	Version
Order No.	<a href="#">1582300000</a>	PCB plug-in connector, Crimp contact, Reel packaged, Pin &ndash;
GTIN (EAN)	4008190020668	standard, Gold-plated, Max. clamping range : 2.5 mm <sup>2</sup>
Qty.	3000 ST	

## RSV1,6 S36 GR BX

**Weidmüller Interface GmbH & Co. KG**  
 Klingenbergstraße 26  
 D-32758 Detmold  
 Germany

www.weidmueller.com

## Accessories

Type	CS1,6R14-12 SN I3,5	Version
Order No.	<a href="#">1429500000</a>	PCB plug-in connector, Crimp contact, Reel packaged, Pin – standard,
GTIN (EAN)	4008190113919	tinned, Max. clamping range : 2.5 mm <sup>2</sup>
Qty.	4000 ST	
Type	CS1,6R14-12 SN I4,2	Version
Order No.	<a href="#">1582320000</a>	PCB plug-in connector, Crimp contact, Reel packaged, Pin – standard,
GTIN (EAN)	4008190008680	tinned, Max. clamping range : 2.5 mm <sup>2</sup>
Qty.	3000 ST	
Type	CS1,6R18-16 AU,75 I2,5	Version
Order No.	<a href="#">1426500000</a>	PCB plug-in connector, Crimp contact, Reel packaged, Pin – standard,
GTIN (EAN)	4008190159146	Gold-plated, Max. clamping range : 1.5 mm <sup>2</sup>
Qty.	5000 ST	
Type	CS1,6R18-16 AU,75 I3,5	Version
Order No.	<a href="#">1582260000</a>	PCB plug-in connector, Crimp contact, Reel packaged, Pin – standard,
GTIN (EAN)	4008190184100	Gold-plated, Max. clamping range : 1.5 mm <sup>2</sup>
Qty.	4000 ST	
Type	CS1,6R18-16 SN I2,5	Version
Order No.	<a href="#">1427500000</a>	PCB plug-in connector, Crimp contact, Reel packaged, Pin – standard,
GTIN (EAN)	4008190014551	tinned, Max. clamping range : 1.5 mm <sup>2</sup>
Qty.	5000 ST	
Type	CS1,6R18-16 SN I3,5	Version
Order No.	<a href="#">1582280000</a>	PCB plug-in connector, Crimp contact, Reel packaged, Pin – standard,
GTIN (EAN)	4008190029401	tinned, Max. clamping range : 1.5 mm <sup>2</sup>
Qty.	4000 ST	
Type	CS1,6R22-20 AU,75 I1,8	Version
Order No.	<a href="#">1422500000</a>	PCB plug-in connector, Crimp contact, Reel packaged, Pin – standard,
GTIN (EAN)	4008190093648	Gold-plated, Max. clamping range : 0.5 mm <sup>2</sup>
Qty.	5000 ST	
Type	CS1,6R22-20 AU,75 I2,5	Version
Order No.	<a href="#">1424500000</a>	PCB plug-in connector, Crimp contact, Reel packaged, Pin – standard,
GTIN (EAN)	4008190158811	Gold-plated, Max. clamping range : 0.5 mm <sup>2</sup>
Qty.	5000 ST	
Type	CS1,6R22-20 SN I1,8	Version
Order No.	<a href="#">1423500000</a>	PCB plug-in connector, Crimp contact, Reel packaged, Pin – standard,
GTIN (EAN)	4008190085063	tinned, Max. clamping range : 0.5 mm <sup>2</sup>
Qty.	5000 ST	
Type	CS1,6R22-20 SN I2,5	Version
Order No.	<a href="#">1425500000</a>	PCB plug-in connector, Crimp contact, Reel packaged, Pin – standard,
GTIN (EAN)	4008190004781	tinned, Max. clamping range : 0.5 mm <sup>2</sup>
Qty.	5000 ST	
Type	CS1,6R26-24 AU,75 I1,4	Version
Order No.	<a href="#">1420500000</a>	PCB plug-in connector, Crimp contact, Reel packaged, Pin – standard;
GTIN (EAN)	4008190117931	standard, Gold-plated, Max. clamping range : 0.25 mm <sup>2</sup>
Qty.	5000 ST	
Type	CS1,6R26-24 SN I1,4	Version
Order No.	<a href="#">1421500000</a>	PCB plug-in connector, Crimp contact, Reel packaged, Pin – standard;
GTIN (EAN)	4008190064310	standard, tinned, Max. clamping range : 0.25 mm <sup>2</sup>
Qty.	5000 ST	
Type	CS1,6RB18-16 AU,75 I3,5	Version
Order No.	<a href="#">1017080000</a>	PCB plug-in connector, Crimp contact, Reel packaged, Pin – standard;
GTIN (EAN)	4032248727711	standard, Gold-plated, Max. clamping range : 1.5 mm <sup>2</sup>
Qty.	4000 ST	

## RSV1,6 S36 GR BX

**Weidmüller Interface GmbH & Co. KG**  
 Klingenbergstraße 26  
 D-32758 Detmold  
 Germany

## Accessories

www.weidmueller.com

## Pin contact, long



For a reliable contact - CB/CS crimp contact. The combination of RSV housings and Weidmüller's crimp contacts enable custom adaptations to the specific requirements of your applications. The following product options are available depending on the system:

- Safe centring of the contacts using the three-segment pin tips
- High contact reliability using four defined contact points
- Locking clasp in the cantilever spring for a secure mount of the contacts in the housing
- Pin contacts with two lengths to implement leading-pin contacts
- Up to 100 plugging cycles (tin version)
- Up to 500 plugging cycles (gold version)

The appropriate high-quality tools from Weidmüller guarantee professional processing.

## General ordering data

Type	CSL1,6E14-12 AU,75 I3,5	Version
Order No.	<a href="#">1428700000</a>	PCB plug-in connector, Crimp contact, Individual contact, Pin - long,
GTIN (EAN)	4008190098353	Gold-plated, Max. clamping range : 2.5 mm <sup>2</sup>
Qty.	250 ST	
Type	CSL1,6E14-12 AU,75 I4,2	Version
Order No.	<a href="#">1582370000</a>	PCB plug-in connector, Crimp contact, Individual contact, Pin - long,
GTIN (EAN)	4008190055608	Gold-plated, Max. clamping range : 2.5 mm <sup>2</sup>
Qty.	250 ST	
Type	CSL1,6E14-12 SN I3,5	Version
Order No.	<a href="#">1429700000</a>	PCB plug-in connector, Crimp contact, Individual contact, Pin - long,
GTIN (EAN)	4008190065577	tinned, Max. clamping range : 2.5 mm <sup>2</sup>
Qty.	250 ST	
Type	CSL1,6E14-12 SN I4,2	Version
Order No.	<a href="#">1582390000</a>	PCB plug-in connector, Crimp contact, Individual contact, Pin - long,
GTIN (EAN)	4008190166762	tinned, Max. clamping range : 2.5 mm <sup>2</sup>
Qty.	250 ST	
Type	CSL1,6E18-16 AU,75 I2,5	Version
Order No.	<a href="#">1426700000</a>	PCB plug-in connector, Crimp contact, Individual contact, Pin - long,
GTIN (EAN)	4008190170516	Gold-plated, Max. clamping range : 1.5 mm <sup>2</sup>
Qty.	250 ST	
Type	CSL1,6E18-16 AU,75 I3,5	Version
Order No.	<a href="#">1582330000</a>	PCB plug-in connector, Crimp contact, Individual contact, Pin - long,
GTIN (EAN)	4008190066079	Gold-plated, Max. clamping range : 1.5 mm <sup>2</sup>
Qty.	250 ST	
Type	CSL1,6E18-16 SN I2,5	Version
Order No.	<a href="#">1427700000</a>	PCB plug-in connector, Crimp contact, Individual contact, Pin - long,
GTIN (EAN)	4008190057725	tinned, Max. clamping range : 1.5 mm <sup>2</sup>
Qty.	250 ST	
Type	CSL1,6E18-16 SN I3,5	Version
Order No.	<a href="#">1582350000</a>	PCB plug-in connector, Crimp contact, Individual contact, Pin - long,
GTIN (EAN)	4008190033620	tinned, Max. clamping range : 1.5 mm <sup>2</sup>
Qty.	250 ST	

## RSV1,6 S36 GR BX

**Weidmüller Interface GmbH & Co. KG**  
 Klingenbergstraße 26  
 D-32758 Detmold  
 Germany

www.weidmueller.com

## Accessories

Type	CSL1,6E22-20 AU,75 I1,8	Version
Order No.	<a href="#">1422700000</a>	PCB plug-in connector, Crimp contact, Individual contact, Pin – long,
GTIN (EAN)	4008190168667	Gold-plated, Max. clamping range : 0.5 mm <sup>2</sup>
Qty.	250 ST	
Type	CSL1,6E22-20 AU,75 I2,5	Version
Order No.	<a href="#">1424700000</a>	PCB plug-in connector, Crimp contact, Individual contact, Pin – long,
GTIN (EAN)	4008190143350	Gold-plated, Max. clamping range : 0.5 mm <sup>2</sup>
Qty.	250 ST	
Type	CSL1,6E22-20 SN I1,8	Version
Order No.	<a href="#">1423700000</a>	PCB plug-in connector, Crimp contact, Individual contact, Pin – long,
GTIN (EAN)	4008190001766	tinned, Max. clamping range : 0.5 mm <sup>2</sup>
Qty.	250 ST	
Type	CSL1,6E22-20 SN I2,5	Version
Order No.	<a href="#">1425700000</a>	PCB plug-in connector, Crimp contact, Individual contact, Pin – long,
GTIN (EAN)	4008190175016	tinned, Max. clamping range : 0.5 mm <sup>2</sup>
Qty.	250 ST	
Type	CSL1,6E26-24 AU,75 I1,4	Version
Order No.	<a href="#">1420700000</a>	PCB plug-in connector, Crimp contact, Individual contact, Pin – long,
GTIN (EAN)	4008190130176	Gold-plated, Max. clamping range : 0.25 mm <sup>2</sup>
Qty.	250 ST	
Type	CSL1,6E26-24 SN I1,4	Version
Order No.	<a href="#">1421700000</a>	PCB plug-in connector, Crimp contact, Individual contact, Pin – long,
GTIN (EAN)	4008190109042	tinned, Max. clamping range : 0.25 mm <sup>2</sup>
Qty.	250 ST	
Type	CSL1,6R14-12 SN I3,5	Version
Order No.	<a href="#">1565780000</a>	PCB plug-in connector, Crimp contact, Reel packaged, Pin – long,
GTIN (EAN)	4008190056735	tinned, Max. clamping range : 2.5 mm <sup>2</sup>
Qty.	4000 ST	
Type	CSL1,6R18-16 AU,75 I2,5	Version
Order No.	<a href="#">1565790000</a>	PCB plug-in connector, Crimp contact, Reel packaged, Pin – long,
GTIN (EAN)	4008190021870	Gold-plated, Max. clamping range : 1.5 mm <sup>2</sup>
Qty.	5000 ST	
Type	CSL1,6R18-16 SN I2,5	Version
Order No.	<a href="#">1565810000</a>	PCB plug-in connector, Crimp contact, Reel packaged, Pin – long,
GTIN (EAN)	4008190056803	tinned, Max. clamping range : 1.5 mm <sup>2</sup>
Qty.	5000 ST	
Type	CSL1,6R18-16 SN I3,5	Version
Order No.	<a href="#">1582360000</a>	PCB plug-in connector, Crimp contact, Reel packaged, Pin – long,
GTIN (EAN)	4008190063214	tinned, Max. clamping range : 1.5 mm <sup>2</sup>
Qty.	4000 ST	
Type	CSL1,6R22-20 AU,75 I2,5	Version
Order No.	<a href="#">1565820000</a>	PCB plug-in connector, Crimp contact, Reel packaged, Pin – long,
GTIN (EAN)	4008190130732	Gold-plated, Max. clamping range : 0.5 mm <sup>2</sup>
Qty.	5000 ST	
Type	CSL1,6R22-20 SN I1,8	Version
Order No.	<a href="#">1565870000</a>	PCB plug-in connector, Crimp contact, Reel packaged, Pin – long,
GTIN (EAN)	4008190086596	tinned, Max. clamping range : 0.5 mm <sup>2</sup>
Qty.	5000 ST	
Type	CSL1,6R26-24 SN I1,4	Version
Order No.	<a href="#">1565900000</a>	PCB plug-in connector, Crimp contact, Reel packaged, Pin – long,
GTIN (EAN)	4008190139797	tinned, Max. clamping range : 0.25 mm <sup>2</sup>
Qty.	5000 ST	