

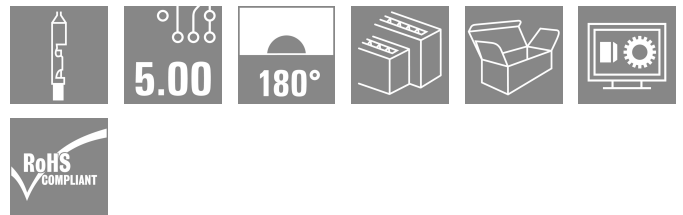
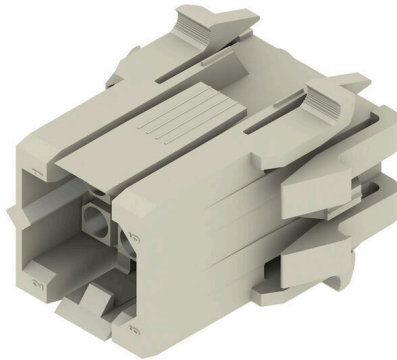
## RSV1,6 S6 GR

**Weidmüller Interface GmbH & Co. KG**

Klingenbergstraße 26  
D-32758 Detmold  
Germany

www.weidmueller.com

### Product image



Rectangular plug-in connector for use with crimp contacts. Can be used as universal coupling, but also with the PCB variations. The crimp contacts guarantee a high connection density. CS 1.6 or CB 1.6 contacts can be used here. The plug-in connectors can be coded and locked to the mating connector. Supplied in cardboard box.

### General ordering data

|              |   |
|--------------|---|
| Version      | PCB plug-in connector, male plug, 5.00 mm, Number of poles: 6, 180°, Crimp connection, Clamping range, max. : 3.31 mm², Box |
| Order No.    | <a href="#">1414100000</a>  |
| Type         | RSV1,6 S6 GR  |
| GTIN (EAN)   | 4008190103835   |
| Qty.         | 25 items  |
| Product data | IEC: 630 V / 17 A<br>UL: 600 V / 10 A / AWG 26 - AWG 12   |
| Packaging    | Box   |

## RSV1,6 S6 GR

Weidmüller Interface GmbH &amp; Co. KG

Klingenbergstraße 26  
D-32758 Detmold  
Germany

www.weidmueller.com

## Technical data

## Approvals

Approvals



ROHS Conform

UL File Number Search [UL Website](#)

Certificate No. (UR) E92202

## Dimensions and weights

|            |        |                 |             |
|------------|--------|-----------------|-------------|
| Depth      | 23 mm  | Depth (inches)  | 0.9055 inch |
| Height     | 27 mm  | Height (inches) | 1.063 inch  |
| Width      | 30 mm  | Width (inches)  | 1.1811 inch |
| Net weight | 6.61 g |                 |             |

## Environmental Product Compliance

RoHS Compliance Status Compliant without exemption

REACH SVHC No SVHC above 0.1 wt%

## System Parameters

|  |                              |  |                                 |
|--|------------------------------|--|---------------------------------|
| Product family                             | OMNIMATE Signal - series RSV | Type of connection                           | Field connection                |
| Wire connection method                     | Crimp connection             | Pitch in mm (P)                              | 5.00 mm                         |
| Pitch in inches (P)                        | 0.197 "                      | Conductor outlet direction                   | 180°                            |
| Number of poles                            | 6                            | L1 in mm                                     | 10.00 mm                        |
| L1 in inches                               | 0.394 "                      | Number of rows                               | 2                               |
| Pin series quantity                        | 3                            | Touch-safe protection acc. to DIN VDE 57 106 | Safe from finger touch, plugged |
| Touch-safe protection acc. to DIN VDE 0470 | IP20 plugged                 | Can be coded                                 | Yes                             |
| Stripping length                           | 4 mm                         | Plugging cycles                              | 25                              |
| Plugging force/pole, max.                  | 9 N                          | Pulling force/pole, max.                     | 18 N                            |

## Material data

|                                       |          |                                       |             |
|---------------------------------------|----------|---------------------------------------|-------------|
| Insulating material                   | PA 66/6  | Colour                                | Pebble grey |
| Colour chart (similar)                | RAL 7032 | Insulating material group             | I           |
| Comparative Tracking Index (CTI)      | ≥ 600    | Moisture Level (MSL)                  |             |
| UL 94 flammability rating             | V-0      | Contact material                      | Cu-alloy    |
| Storage temperature, min.             | -40 °C   | Storage temperature, max.             | 70 °C       |
| Operating temperature, min.           | -50 °C   | Operating temperature, max.           | 100 °C      |
| Temperature range, installation, min. | -25 °C   | Temperature range, installation, max. | 100 °C      |

## Conductors suitable for connection

|                            |                      |                            |                      |
|----------------------------|----------------------|----------------------------|----------------------|
| Clamping range, min.       | 0.13 mm <sup>2</sup> | Clamping range, max.       | 3.31 mm <sup>2</sup> |
| Flexible, min. H05(07) V-K | 0.2 mm <sup>2</sup>  | Flexible, max. H05(07) V-K | 2.5 mm <sup>2</sup>  |

## Technical data

### Rated data acc. to IEC

|   |                        |   |                   |
|---|------------------------|---|-------------------|
| tested acc. to standard   | IEC 60664-1, IEC 61984 | Rated current, min. number of poles (Tu=20°C)                         | 17 A              |
| Rated current, max. number of poles (Tu=20°C)                             | 13 A                   | Rated current, min. number of poles (Tu=40°C)                         | 15 A              |
| Rated current, max. number of poles (Tu=40°C)                             | 11.5 A                 | Rated voltage for surge voltage class / pollution degree II/2         | 630 V             |
| Rated voltage for surge voltage class / pollution degree III/2            | 400 V                  | Rated voltage for surge voltage class / pollution degree III/3        | 250 V             |
| Rated impulse voltage for surge voltage class/ pollution degree II/2      | 4 kV                   | Rated impulse voltage for surge voltage class/ pollution degree III/2 | 4 kV              |
| Rated impulse voltage for surge voltage class/ contamination degree III/3 | 4 kV                   | Short-time withstand current resistance                               | 3 x 1s with 120 A |

### Rated data acc. to CSA

|                                   |  |                                   |          |
|-----------------------------------|--|-----------------------------------|----------|
| Institute (CSA)                   | CSA  | Certificate No. (CSA)             | 53975-13 |
| Rated voltage (Use group C / CSA) | 600 V  | Rated current (Use group C / CSA) | 13 A     |
| Wire cross-section, AWG, min.     | AWG 26   | Wire cross-section, AWG, max.     | AWG 12   |
| Reference to approval values      | Specifications are maximum values, details - see approval certificate. |                                   |          |

### Rated data acc. to UL 1059

|                              |  |                      |        |
|------------------------------|--|----------------------|--------|
| Institute (UR)               | UR   | Certificate No. (UR) | E92202 |
| Reference to approval values | Specifications are maximum values, details - see approval certificate. |                      |        |

### Packing

|           |           |            |           |
|-----------|-----------|------------|-----------|
| Packaging | Box       | VPE length | 131.00 mm |
| VPE width | 105.00 mm | VPE height | 66.00 mm  |

### Important note

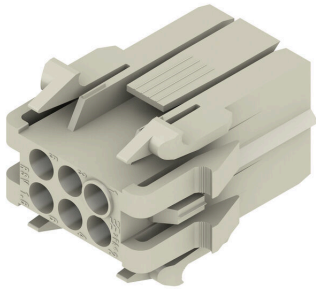
|                |   |  |  |
|----------------|---|--|--|
| IPC conformity | Conformity: The products are developed, manufactured and delivered according international recognized standards and norms and comply with the assured properties in the data sheet resp. fulfill decorative properties in accordance with IPC-A-610 "Class 2". Further claims on the products can be evaluated on request.  |  |  |
| Notes          | <ul style="list-style-type: none"> <li>• Additional variants on request</li> <li>• Rated current related to rated cross-section &amp; min. No. of poles.</li> <li>• Spacing between rows: see hole layout</li> <li>• Rated cross-section depends on crimp contact used.</li> <li>• Rated data refer only to the component itself. Clearance and creepage distances to other components are to be designed in accordance with the relevant application standards.</li> <li>• Max. outer diameter of the cable (with insulation): 3.5 mm</li> <li>• Long term storage of the product with average temperature of 50 °C and maximum humidity 70%, 36 months</li> </ul> |  |  |

### Classifications

|             |             |             |             |
|-------------|-------------|-------------|-------------|
| ETIM 8.0    | EC002638    | ETIM 9.0    | EC002638    |
| ETIM 10.0   | EC002638    | ECLASS 14.0 | 27-46-02-02 |
| ECLASS 15.0 | 27-46-02-02 |             |             |

### Drawings

#### Product image



#### Dimensional drawing



#### Dimensional drawing



| poles | dimension male plug / female plug |      |      |      |      | mounting cut-out |      |
|-------|-----------------------------------|------|------|------|------|------------------|------|
|       | A                                 | B    | C    | D    | E    | a                | b    |
| 4     | 23,0                              | 25,0 | 10,8 | 12,0 | 17,8 | 20,3             | 18,1 |
| 6     | 23,0                              | 30,0 | 10,8 | 17,6 | 17,8 | 25,1             | 18,1 |
| 8     | 29,0                              | 30,0 | 16,1 | 17,6 | 23,8 | 25,1             | 24,0 |
| 12    | 29,0                              | 35,0 | 16,1 | 22,6 | 23,8 | 30,0             | 24,0 |
| 18    | 29,0                              | 46,0 | 16,1 | 33,0 | 23,8 | 40,5             | 24,0 |
| 24    | 33,0                              | 46,0 | 20,6 | 33,0 | 27,8 | 40,5             | 28,3 |
| 36    | 33,0                              | 61,0 | 20,6 | 48,0 | 27,8 | 55,5             | 28,3 |

#### Graph



## RSV1,6 S6 GR

Weidmüller Interface GmbH &amp; Co. KG

Klingenbergstraße 26

D-32758 Detmold

Germany

www.weidmueller.com

## Accessories

## Adapters for rail mounting



Clip on and use!

From the circuit board in the control cabinet: snap-on or mounting feet form the link between plug-in connectors and terminal rails.

Compatible with all standard sizes: TS 15 or TS 35.

Combination foot or variations available.

The quick alternative to screw connections: unbeatable ease of installation and service.

The mounting foot for the terminal rails allows the universal use of pluggable connection systems on the module, the enclosure and the control cabinet and avoids patchwork solutions.

## General ordering data

|            |                            |  |
|------------|----------------------------|--|
| Type       | RSV1,6 RF6/35X15 SW        | Version  |
| Order No.  | <a href="#">1690120000</a> | PCB plug-in connector, Accessories, Clip-in foot, black, Number of |
| GTIN (EAN) | 4008190862985              | poles: 6   |
| Qty.       | 10 ST                      |  |
| Type       | RSV1,6 RF6/35X7.5 SW       | Version  |
| Order No.  | <a href="#">1582920000</a> | PCB plug-in connector, Accessories, Clip-in foot, black, Number of |
| GTIN (EAN) | 4008190146870              | poles: 6   |
| Qty.       | 10 ST                      |  |

## Strain reliefs



For frequent load changes: the "trailer coupling" for plug-in connectors.

The strain relief can do more than just relieve the strain on conductors:

Simply clip onto the plug and

- bundle conductors
- guide cables
- use as a connection and disconnection aid

No damage to the connecting points, clear, tidy wiring and easy to handle.

User advantages: permanent heavy-duty connections for harsh industrial environments and convenient operation ensure improved system availability.

## General ordering data

|            |                            |   |
|------------|----------------------------|---|
| Type       | RSV1,6 ZE06 BK BX          | Version   |
| Order No.  | <a href="#">1563500000</a> | PCB plug-in connector, Accessories, Strain relief, black, Number of |
| GTIN (EAN) | 4008190038472              | poles: 6  |
| Qty.       | 25 ST                      |   |

## RSV1,6 S6 GR

**Weidmüller Interface GmbH & Co. KG**  
Klingenbergstraße 26  
D-32758 Detmold  
Germany

www.weidmueller.com

## Accessories

## Coding elements



Only connects what is supposed to be connected: the right connection at the right place.  
Coding elements and locking devices clearly assign connecting elements during the manufacturing process and operation  
The coding elements and locking devices are inserted prior to assembly or during the cable assembly phase. The Weidmüller alternative: configure online using the variant configurator to precode prior to delivery. Incorrect assembly on the circuit board and incorrect plugging of connecting elements is no longer possible. The advantage: no troubleshooting during manufacture and no operational errors by the user.

## General ordering data

|            |                            |   |
|------------|----------------------------|---|
| Type       | RSV1,6 KO                  | Version   |
| Order No.  | <a href="#">1567430000</a> | PCB plug-in connector, Accessories, Coding element, black, Number of poles: 1 |
| GTIN (EAN) | 4008190169756              |   |
| Qty.       | 50 ST                      |   |

## Pin contact standard



For a reliable contact - CB/CS crimp contact. The combination of RSV housings and Weidmüller's crimp contacts enable custom adaptations to the specific requirements of your applications.  
The following product options are available depending on the system:

- Safe centring of the contacts using the three-segment pin tips
- High contact reliability using four defined contact points
- Locking clasp in the cantilever spring for a secure mount of the contacts in the housing
- Pin contacts with two lengths to implement leading-pin contacts
- Up to 100 plugging cycles (tin version)
- Up to 500 plugging cycles (gold version)

The appropriate high-quality tools from Weidmüller guarantee professional processing.

## General ordering data

|            |                            |  |
|------------|----------------------------|--|
| Type       | CS1,6E14-12 AU,75 I3,5     | Version  |
| Order No.  | <a href="#">1428600000</a> | PCB plug-in connector, Crimp contact, Individual contact, Pin - standard, Gold-plated, Max. clamping range : 2.5 mm <sup>2</sup> |
| GTIN (EAN) | 4008190078867              |  |
| Qty.       | 250 ST                     |  |
| Type       | CS1,6E14-12 AU,75 I4,2     | Version  |
| Order No.  | <a href="#">1582290000</a> | PCB plug-in connector, Crimp contact, Individual contact, Pin - standard, Gold-plated, Max. clamping range : 2.5 mm <sup>2</sup> |
| GTIN (EAN) | 4008190015244              |  |
| Qty.       | 250 ST                     |  |
| Type       | CS1,6E14-12 SN I3,5        | Version  |
| Order No.  | <a href="#">1429600000</a> | PCB plug-in connector, Crimp contact, Individual contact, Pin - standard, tinned, Max. clamping range : 2.5 mm <sup>2</sup>      |
| GTIN (EAN) | 4008190030728              |  |
| Qty.       | 250 ST                     |  |

## RSV1,6 S6 GR

**Weidmüller Interface GmbH & Co. KG**  
 Klingenbergstraße 26  
 D-32758 Detmold  
 Germany

www.weidmueller.com

## Accessories

|            |                            |  |
|------------|----------------------------|--|
| Type       | CS1,6E14-12 SN I4,2        | Version  |
| Order No.  | <a href="#">1582310000</a> | PCB plug-in connector, Crimp contact, Individual contact, Pin –      |
| GTIN (EAN) | 4008190032975              | standard, tinned, Max. clamping range : 2.5 mm <sup>2</sup>          |
| Qty.       | 250 ST                     |  |
| Type       | CS1,6E18-16 AU,75 I2,5     | Version  |
| Order No.  | <a href="#">1426600000</a> | PCB plug-in connector, Crimp contact, Individual contact, Pin –      |
| GTIN (EAN) | 4008190182861              | standard, Gold-plated, Max. clamping range : 1.5 mm <sup>2</sup>     |
| Qty.       | 250 ST                     |  |
| Type       | CS1,6E18-16 AU,75 I3,5     | Version  |
| Order No.  | <a href="#">1582250000</a> | PCB plug-in connector, Crimp contact, Individual contact, Pin –      |
| GTIN (EAN) | 4008190135614              | standard, Gold-plated, Max. clamping range : 1.5 mm <sup>2</sup>     |
| Qty.       | 250 ST                     |  |
| Type       | CS1,6E18-16 SN I2,5        | Version  |
| Order No.  | <a href="#">1427600000</a> | PCB plug-in connector, Crimp contact, Individual contact, Pin –      |
| GTIN (EAN) | 4008190090654              | standard, tinned, Max. clamping range : 1.5 mm <sup>2</sup>          |
| Qty.       | 250 ST                     |  |
| Type       | CS1,6E18-16 SN I3,5        | Version  |
| Order No.  | <a href="#">1582270000</a> | PCB plug-in connector, Crimp contact, Individual contact, Pin –      |
| GTIN (EAN) | 4008190126049              | standard, tinned, Max. clamping range : 1.5 mm <sup>2</sup>          |
| Qty.       | 250 ST                     |  |
| Type       | CS1,6E22-20 AU,75 I1,8     | Version  |
| Order No.  | <a href="#">1422600000</a> | PCB plug-in connector, Crimp contact, Individual contact, Pin –      |
| GTIN (EAN) | 4008190090463              | standard, Gold-plated, Max. clamping range : 0.5 mm <sup>2</sup>     |
| Qty.       | 250 ST                     |  |
| Type       | CS1,6E22-20 AU,75 I2,5     | Version  |
| Order No.  | <a href="#">1424600000</a> | PCB plug-in connector, Crimp contact, Individual contact, Pin –      |
| GTIN (EAN) | 4008190186562              | standard, Gold-plated, Max. clamping range : 0.5 mm <sup>2</sup>     |
| Qty.       | 250 ST                     |  |
| Type       | CS1,6E22-20 SN I1,8        | Version  |
| Order No.  | <a href="#">1423600000</a> | PCB plug-in connector, Crimp contact, Individual contact, Pin –      |
| GTIN (EAN) | 4008190061876              | standard, tinned, Max. clamping range : 0.5 mm <sup>2</sup>          |
| Qty.       | 250 ST                     |  |
| Type       | CS1,6E22-20 SN I2,5        | Version  |
| Order No.  | <a href="#">1425600000</a> | PCB plug-in connector, Crimp contact, Individual contact, Pin –      |
| GTIN (EAN) | 4008190048884              | standard, tinned, Max. clamping range : 0.5 mm <sup>2</sup>          |
| Qty.       | 250 ST                     |  |
| Type       | CS1,6E26-24 AU,75 I1,4     | Version  |
| Order No.  | <a href="#">1420600000</a> | PCB plug-in connector, Crimp contact, Individual contact, Pin –      |
| GTIN (EAN) | 4008190082772              | standard, Gold-plated, Max. clamping range : 0.25 mm <sup>2</sup>    |
| Qty.       | 250 ST                     |  |
| Type       | CS1,6E26-24 SN I1,4        | Version  |
| Order No.  | <a href="#">1421600000</a> | PCB plug-in connector, Crimp contact, Individual contact, Pin –      |
| GTIN (EAN) | 4008190009939              | standard, tinned, Max. clamping range : 0.25 mm <sup>2</sup>         |
| Qty.       | 250 ST                     |  |
| Type       | CS1,6R14-12 AU,75 I3,5     | Version  |
| Order No.  | <a href="#">1428500000</a> | PCB plug-in connector, Crimp contact, Reel packaged, Pin – standard, |
| GTIN (EAN) | 4008190023201              | Gold-plated, Max. clamping range : 2.5 mm <sup>2</sup>               |
| Qty.       | 3000 ST                    |  |
| Type       | CS1,6R14-12 AU,75 I4,2     | Version  |
| Order No.  | <a href="#">1582300000</a> | PCB plug-in connector, Crimp contact, Reel packaged, Pin &ndash;     |
| GTIN (EAN) | 4008190020668              | standard, Gold-plated, Max. clamping range : 2.5 mm <sup>2</sup>     |
| Qty.       | 3000 ST                    |  |

## RSV1,6 S6 GR

**Weidmüller Interface GmbH & Co. KG**  
 Klingenbergstraße 26  
 D-32758 Detmold  
 Germany

www.weidmueller.com

## Accessories

|            |                            |  |
|------------|----------------------------|--|
| Type       | CS1,6R14-12 SN I3,5        | Version  |
| Order No.  | <a href="#">1429500000</a> | PCB plug-in connector, Crimp contact, Reel packaged, Pin – standard, |
| GTIN (EAN) | 4008190113919              | tinned, Max. clamping range : 2.5 mm <sup>2</sup>                    |
| Qty.       | 4000 ST                    |  |
| Type       | CS1,6R14-12 SN I4,2        | Version  |
| Order No.  | <a href="#">1582320000</a> | PCB plug-in connector, Crimp contact, Reel packaged, Pin – standard, |
| GTIN (EAN) | 4008190008680              | tinned, Max. clamping range : 2.5 mm <sup>2</sup>                    |
| Qty.       | 3000 ST                    |  |
| Type       | CS1,6R18-16 AU,75 I2,5     | Version  |
| Order No.  | <a href="#">1426500000</a> | PCB plug-in connector, Crimp contact, Reel packaged, Pin – standard, |
| GTIN (EAN) | 4008190159146              | Gold-plated, Max. clamping range : 1.5 mm <sup>2</sup>               |
| Qty.       | 5000 ST                    |  |
| Type       | CS1,6R18-16 AU,75 I3,5     | Version  |
| Order No.  | <a href="#">1582260000</a> | PCB plug-in connector, Crimp contact, Reel packaged, Pin – standard, |
| GTIN (EAN) | 4008190184100              | Gold-plated, Max. clamping range : 1.5 mm <sup>2</sup>               |
| Qty.       | 4000 ST                    |  |
| Type       | CS1,6R18-16 SN I2,5        | Version  |
| Order No.  | <a href="#">1427500000</a> | PCB plug-in connector, Crimp contact, Reel packaged, Pin – standard, |
| GTIN (EAN) | 4008190014551              | tinned, Max. clamping range : 1.5 mm <sup>2</sup>                    |
| Qty.       | 5000 ST                    |  |
| Type       | CS1,6R18-16 SN I3,5        | Version  |
| Order No.  | <a href="#">1582280000</a> | PCB plug-in connector, Crimp contact, Reel packaged, Pin – standard, |
| GTIN (EAN) | 4008190029401              | tinned, Max. clamping range : 1.5 mm <sup>2</sup>                    |
| Qty.       | 4000 ST                    |  |
| Type       | CS1,6R22-20 AU,75 I1,8     | Version  |
| Order No.  | <a href="#">1422500000</a> | PCB plug-in connector, Crimp contact, Reel packaged, Pin – standard, |
| GTIN (EAN) | 4008190093648              | Gold-plated, Max. clamping range : 0.5 mm <sup>2</sup>               |
| Qty.       | 5000 ST                    |  |
| Type       | CS1,6R22-20 AU,75 I2,5     | Version  |
| Order No.  | <a href="#">1424500000</a> | PCB plug-in connector, Crimp contact, Reel packaged, Pin – standard, |
| GTIN (EAN) | 4008190158811              | Gold-plated, Max. clamping range : 0.5 mm <sup>2</sup>               |
| Qty.       | 5000 ST                    |  |
| Type       | CS1,6R22-20 SN I1,8        | Version  |
| Order No.  | <a href="#">1423500000</a> | PCB plug-in connector, Crimp contact, Reel packaged, Pin – standard, |
| GTIN (EAN) | 4008190085063              | tinned, Max. clamping range : 0.5 mm <sup>2</sup>                    |
| Qty.       | 5000 ST                    |  |
| Type       | CS1,6R22-20 SN I2,5        | Version  |
| Order No.  | <a href="#">1425500000</a> | PCB plug-in connector, Crimp contact, Reel packaged, Pin – standard, |
| GTIN (EAN) | 4008190004781              | tinned, Max. clamping range : 0.5 mm <sup>2</sup>                    |
| Qty.       | 5000 ST                    |  |
| Type       | CS1,6R26-24 AU,75 I1,4     | Version  |
| Order No.  | <a href="#">1420500000</a> | PCB plug-in connector, Crimp contact, Reel packaged, Pin – standard; |
| GTIN (EAN) | 4008190117931              | standard, Gold-plated, Max. clamping range : 0.25 mm <sup>2</sup>    |
| Qty.       | 5000 ST                    |  |
| Type       | CS1,6R26-24 SN I1,4        | Version  |
| Order No.  | <a href="#">1421500000</a> | PCB plug-in connector, Crimp contact, Reel packaged, Pin – standard; |
| GTIN (EAN) | 4008190064310              | standard, tinned, Max. clamping range : 0.25 mm <sup>2</sup>         |
| Qty.       | 5000 ST                    |  |
| Type       | CS1,6RB18-16 AU,75 I3,5    | Version  |
| Order No.  | <a href="#">1017080000</a> | PCB plug-in connector, Crimp contact, Reel packaged, Pin – standard; |
| GTIN (EAN) | 4032248727711              | standard, Gold-plated, Max. clamping range : 1.5 mm <sup>2</sup>     |
| Qty.       | 4000 ST                    |  |

### Pin contact, long



For a reliable contact - CB/CS crimp contact. The combination of RSV housings and Weidmüller's crimp contacts enable custom adaptations to the specific requirements of your applications.

The following product options are available depending on the system:

- Safe centring of the contacts using the three-segment pin tips
- High contact reliability using four defined contact points
- Locking clasp in the cantilever spring for a secure mount of the contacts in the housing
- Pin contacts with two lengths to implement leading-pin contacts
- Up to 100 plugging cycles (tin version)
- Up to 500 plugging cycles (gold version)

The appropriate high-quality tools from Weidmüller guarantee professional processing.

### General ordering data

|            |                            |   |
|------------|----------------------------|---|
| Type       | CSL1,6E14-12 AU,75 I3,5    | Version   |
| Order No.  | <a href="#">1428700000</a> | PCB plug-in connector, Crimp contact, Individual contact, Pin - long, |
| GTIN (EAN) | 4008190098353              | Gold-plated, Max. clamping range : 2.5 mm <sup>2</sup>                |
| Qty.       | 250 ST                     |   |
| Type       | CSL1,6E14-12 AU,75 I4,2    | Version   |
| Order No.  | <a href="#">1582370000</a> | PCB plug-in connector, Crimp contact, Individual contact, Pin - long, |
| GTIN (EAN) | 4008190055608              | Gold-plated, Max. clamping range : 2.5 mm <sup>2</sup>                |
| Qty.       | 250 ST                     |   |
| Type       | CSL1,6E14-12 SN I3,5       | Version   |
| Order No.  | <a href="#">1429700000</a> | PCB plug-in connector, Crimp contact, Individual contact, Pin - long, |
| GTIN (EAN) | 4008190065577              | tinned, Max. clamping range : 2.5 mm <sup>2</sup>                     |
| Qty.       | 250 ST                     |   |
| Type       | CSL1,6E14-12 SN I4,2       | Version   |
| Order No.  | <a href="#">1582390000</a> | PCB plug-in connector, Crimp contact, Individual contact, Pin - long, |
| GTIN (EAN) | 4008190166762              | tinned, Max. clamping range : 2.5 mm <sup>2</sup>                     |
| Qty.       | 250 ST                     |   |
| Type       | CSL1,6E18-16 AU,75 I2,5    | Version   |
| Order No.  | <a href="#">1426700000</a> | PCB plug-in connector, Crimp contact, Individual contact, Pin - long, |
| GTIN (EAN) | 4008190170516              | Gold-plated, Max. clamping range : 1.5 mm <sup>2</sup>                |
| Qty.       | 250 ST                     |   |
| Type       | CSL1,6E18-16 AU,75 I3,5    | Version   |
| Order No.  | <a href="#">1582330000</a> | PCB plug-in connector, Crimp contact, Individual contact, Pin - long, |
| GTIN (EAN) | 4008190066079              | Gold-plated, Max. clamping range : 1.5 mm <sup>2</sup>                |
| Qty.       | 250 ST                     |   |
| Type       | CSL1,6E18-16 SN I2,5       | Version   |
| Order No.  | <a href="#">1427700000</a> | PCB plug-in connector, Crimp contact, Individual contact, Pin - long, |
| GTIN (EAN) | 4008190057725              | tinned, Max. clamping range : 1.5 mm <sup>2</sup>                     |
| Qty.       | 250 ST                     |   |
| Type       | CSL1,6E18-16 SN I3,5       | Version   |
| Order No.  | <a href="#">1582350000</a> | PCB plug-in connector, Crimp contact, Individual contact, Pin - long, |
| GTIN (EAN) | 4008190033620              | tinned, Max. clamping range : 1.5 mm <sup>2</sup>                     |
| Qty.       | 250 ST                     |   |

## RSV1,6 S6 GR

**Weidmüller Interface GmbH & Co. KG**  
 Klingenbergstraße 26  
 D-32758 Detmold  
 Germany

www.weidmueller.com

## Accessories

|            |                            |   |
|------------|----------------------------|---|
| Type       | CSL1,6E22-20 AU,75 I1,8    | Version   |
| Order No.  | <a href="#">1422700000</a> | PCB plug-in connector, Crimp contact, Individual contact, Pin – long, |
| GTIN (EAN) | 4008190168667              | Gold-plated, Max. clamping range : 0.5 mm <sup>2</sup>                |
| Qty.       | 250 ST                     |   |
| Type       | CSL1,6E22-20 AU,75 I2,5    | Version   |
| Order No.  | <a href="#">1424700000</a> | PCB plug-in connector, Crimp contact, Individual contact, Pin – long, |
| GTIN (EAN) | 4008190143350              | Gold-plated, Max. clamping range : 0.5 mm <sup>2</sup>                |
| Qty.       | 250 ST                     |   |
| Type       | CSL1,6E22-20 SN I1,8       | Version   |
| Order No.  | <a href="#">1423700000</a> | PCB plug-in connector, Crimp contact, Individual contact, Pin – long, |
| GTIN (EAN) | 4008190001766              | tinned, Max. clamping range : 0.5 mm <sup>2</sup>                     |
| Qty.       | 250 ST                     |   |
| Type       | CSL1,6E22-20 SN I2,5       | Version   |
| Order No.  | <a href="#">1425700000</a> | PCB plug-in connector, Crimp contact, Individual contact, Pin – long, |
| GTIN (EAN) | 4008190175016              | tinned, Max. clamping range : 0.5 mm <sup>2</sup>                     |
| Qty.       | 250 ST                     |   |
| Type       | CSL1,6E26-24 AU,75 I1,4    | Version   |
| Order No.  | <a href="#">1420700000</a> | PCB plug-in connector, Crimp contact, Individual contact, Pin – long, |
| GTIN (EAN) | 4008190130176              | Gold-plated, Max. clamping range : 0.25 mm <sup>2</sup>               |
| Qty.       | 250 ST                     |   |
| Type       | CSL1,6E26-24 SN I1,4       | Version   |
| Order No.  | <a href="#">1421700000</a> | PCB plug-in connector, Crimp contact, Individual contact, Pin – long, |
| GTIN (EAN) | 4008190109042              | tinned, Max. clamping range : 0.25 mm <sup>2</sup>                    |
| Qty.       | 250 ST                     |   |
| Type       | CSL1,6R14-12 SN I3,5       | Version   |
| Order No.  | <a href="#">1565780000</a> | PCB plug-in connector, Crimp contact, Reel packaged, Pin – long,      |
| GTIN (EAN) | 4008190056735              | tinned, Max. clamping range : 2.5 mm <sup>2</sup>                     |
| Qty.       | 4000 ST                    |   |
| Type       | CSL1,6R18-16 AU,75 I2,5    | Version   |
| Order No.  | <a href="#">1565790000</a> | PCB plug-in connector, Crimp contact, Reel packaged, Pin – long,      |
| GTIN (EAN) | 4008190021870              | Gold-plated, Max. clamping range : 1.5 mm <sup>2</sup>                |
| Qty.       | 5000 ST                    |   |
| Type       | CSL1,6R18-16 SN I2,5       | Version   |
| Order No.  | <a href="#">1565810000</a> | PCB plug-in connector, Crimp contact, Reel packaged, Pin – long,      |
| GTIN (EAN) | 4008190056803              | tinned, Max. clamping range : 1.5 mm <sup>2</sup>                     |
| Qty.       | 5000 ST                    |   |
| Type       | CSL1,6R18-16 SN I3,5       | Version   |
| Order No.  | <a href="#">1582360000</a> | PCB plug-in connector, Crimp contact, Reel packaged, Pin – long,      |
| GTIN (EAN) | 4008190063214              | tinned, Max. clamping range : 1.5 mm <sup>2</sup>                     |
| Qty.       | 4000 ST                    |   |
| Type       | CSL1,6R22-20 AU,75 I2,5    | Version   |
| Order No.  | <a href="#">1565820000</a> | PCB plug-in connector, Crimp contact, Reel packaged, Pin – long,      |
| GTIN (EAN) | 4008190130732              | Gold-plated, Max. clamping range : 0.5 mm <sup>2</sup>                |
| Qty.       | 5000 ST                    |   |
| Type       | CSL1,6R22-20 SN I1,8       | Version   |
| Order No.  | <a href="#">1565870000</a> | PCB plug-in connector, Crimp contact, Reel packaged, Pin – long,      |
| GTIN (EAN) | 4008190086596              | tinned, Max. clamping range : 0.5 mm <sup>2</sup>                     |
| Qty.       | 5000 ST                    |   |
| Type       | CSL1,6R26-24 SN I1,4       | Version   |
| Order No.  | <a href="#">1565900000</a> | PCB plug-in connector, Crimp contact, Reel packaged, Pin – long,      |
| GTIN (EAN) | 4008190139797              | tinned, Max. clamping range : 0.25 mm <sup>2</sup>                    |
| Qty.       | 5000 ST                    |   |