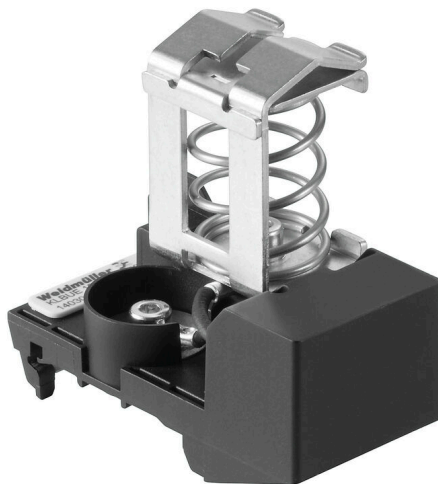


KLBUE 10-20 RC TS35**Weidmüller Interface GmbH & Co. KG**

Klingenbergstraße 26

D-32758 Detmold

Germany

www.weidmueller.com**Product image**

With our wide range of KLBÜ shield connections, you can achieve flexible and self-adjusting shield contacting and ensure error-free plant operation.

General ordering data

| | |
|------------|---|
| Version | Clamping yoke, Clamping yoke for shield connection, PA 66 GF 30 |
| Order No. | 1403080000 |
| Type | KLBUE 10-20 RC TS35 |
| GTIN (EAN) | 4050118205213 |
| Qty. | 1 items |

KLBUE 10-20 RC TS35

Weidmüller Interface GmbH & Co. KG

Klingenbergstraße 26

D-32758 Detmold

Germany

www.weidmueller.com

Technical data

Approvals

| | |
|------|---------|
| ROHS | Conform |
|------|---------|

Dimensions and weights

| | | | |
|------------|---------|-----------------|-------------|
| Depth | 63.6 mm | Depth (inches) | 2.5039 inch |
| Height | 67.5 mm | Height (inches) | 2.6575 inch |
| Width | 39.6 mm | Width (inches) | 1.5591 inch |
| Net weight | 86.24 g | | |

Temperatures

| | | | |
|----------------------------------|----------------|----------------------------------|---------------|
| Storage temperature | -25 °C...55 °C | Ambient temperature | -5 °C...40 °C |
| Continuous operating temp., min. | -25 °C | Continuous operating temp., max. | 105 °C |

Environmental Product Compliance

| | |
|--------------------------------------|--------------------------------------|
| RoHS Compliance Status | Compliant with exemption |
| RoHS Exemption (if applicable/known) | 6c |
| REACH SVHC | Lead 7439-92-1 |
| SCIP | 6fc8563f-82a2-46cf-b3da-0e2c7ddd4382 |

Material data

| | | | |
|---------------------------|-------------|--------|--------------------|
| Basic material | PA 66 GF 30 | Colour | black, Silver grey |
| UL 94 flammability rating | V-0 | | |

System specifications

| | | | |
|---------------|---|--------------------------|----|
| Version | For a shield connection, With resistor | End cover plate required | No |
| Mounting rail | TS 35 | | |

Additional technical data

| | | | |
|---------------------|-----------------|--------------------------|----|
| Installation advice | Direct mounting | Explosion-tested version | No |
| Type of mounting | Snap-on | | |

Conductors for clamping (rated connection)

| | | | |
|---|-------|--|--------------------|
| Stripping length | 30 mm | Type of connection | Spring connection |
| Number of connections | 1 | Cable diameter, max. | 20 mm |
| Cable diameter, min. | 10 mm | Connection cross-section, stranded, max. | 20 mm ² |
| Connection cross-section, stranded, min. 10 mm ² | | | |

General

| | | | |
|---------------------|-----------------|---------------|-------|
| Installation advice | Direct mounting | Mounting rail | TS 35 |
|---------------------|-----------------|---------------|-------|

Rating data

| | | | |
|---------------------|--------------------|---------------|-------|
| Rated cross-section | 20 mm ² | Rated voltage | 230 V |
|---------------------|--------------------|---------------|-------|

KLBUE 10-20 RC TS35

Weidmüller Interface GmbH & Co. KG

Klingenbergstraße 26

D-32758 Detmold

Germany

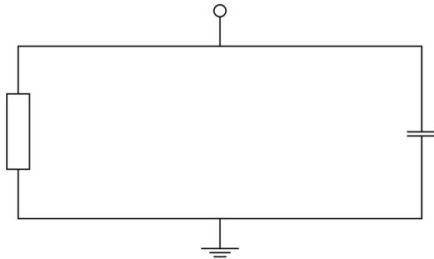
www.weidmueller.com

Technical data

Classifications

| | | | |
|-------------|-------------|-------------|-------------|
| ETIM 8.0 | EC002020 | ETIM 9.0 | EC002020 |
| ETIM 10.0 | EC002020 | ECLASS 14.0 | 27-25-01-20 |
| ECLASS 15.0 | 27-25-01-20 | | |

Drawings



KLBUE 10-20 RC TS35

Weidmüller Interface GmbH & Co. KG

Klingenbergstraße 26

D-32758 Detmold

Germany

www.weidmueller.com

Accessories

Steel



Steel DIN rails are the most widespread on the market. Among metal DIN rails, they have the lowest shortcircuit protection, similar to stainless steel.

General ordering data

| | | |
|------------|----------------------------|---|
| Type | TS 35X7.5 2M/ST/ZN | Version |
| Order No. | 0383400000 | Terminal rail, Accessories, Steel, galvanic zinc plated and passivated, |
| GTIN (EAN) | 4008190088026 | Width: 2000 mm, Height: 35 mm, Depth: 7.5 mm |
| Qty. | 40 M | |
| Type | TS 35X7.5/LL 2M/ST/ZN | Version |
| Order No. | 0514500000 | Terminal rail, Accessories, Steel, galvanic zinc plated and passivated, |
| GTIN (EAN) | 4008190046019 | Width: 2000 mm, Height: 35 mm, Depth: 7.5 mm |
| Qty. | 40 M | |
| Type | TS 35X15/2.3 2M/ST/ZN | Version |
| Order No. | 0498000000 | Terminal rail, Accessories, Steel, galvanic zinc plated and passivated, |
| GTIN (EAN) | 4008190042493 | Width: 2000 mm, Height: 35 mm, Depth: 15 mm |
| Qty. | 20 M | |
| Type | TS 35X15/LL 2M/ST/ZN | Version |
| Order No. | 0236500000 | Terminal rail, Accessories, Steel, galvanic zinc plated and passivated, |
| GTIN (EAN) | 4008190183967 | Width: 2000 mm, Height: 35 mm, Depth: 15 mm |
| Qty. | 20 M | |

Blank, adhesive backing



SM is a MultiCard marker for labelling control and signalling devices. The tags are clipped into the carriers or attached by means of the adhesive film already fitted to them. Customised tags can be created with the PrintJet CONNECT or Plotter marking systems.

- Users can quickly produce tags to suit their needs
- No need to stock expensive standard tags
- Highly resistant printing quality when using the PrintJet as a substitute for engraving
- For extreme demands, we recommend the ETO SM protective film
- Holders can be used for the 22-mm or 30-mm-diameter push-buttons from Siemens, ABB, Moeller and Télémécanique

For custom printing: Please send us a file of our labeling software M-Print PRO or M-Print PRO Online (without installation) for your labeling specifications.

General ordering data

| | | |
|------------|----------------------------|--|
| Type | SM 27/8 K MC NE WS | Version |
| Order No. | 1812630000 | SwitchMark, Device markers, 8 x 27 mm, white |
| GTIN (EAN) | 4032248296033 | |
| Qty. | 80 ST | |

KLBUE 10-20 RC TS35
Weidmüller Interface GmbH & Co. KG

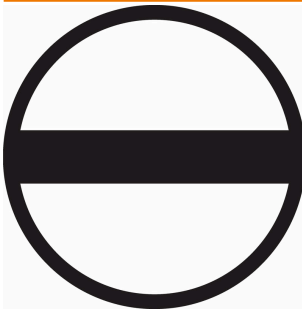
 Klingenbergstraße 26
 D-32758 Detmold
 Germany

www.weidmueller.com
Accessories
Mounting support


We offer a broad portfolio of mounting support for easy handling and supplementation of our products. From various tools to insulating sleeves and various screws, our components are matched to each other down to the last detail and thus facilitate assembly in compliance with the respective standards and protective regulations.

General ordering data

| | | |
|------------|----------------------------|-----------------------|
| Type | BTWZ KLBUE | Version |
| Order No. | 1742630000 | Tools, Operating tool |
| GTIN (EAN) | 4008190980764 | |
| Qty. | 1 ST | |

Slotted screwdriver


Slotted screwdriver with rounded blade SD DIN 5265, ISO 2380/2, output to DIN 5264, ISO 2380/1. ChromTop tip, SoftFinish grip

General ordering data

| | | |
|------------|----------------------------|--------------------------|
| Type | SDS 0.6X3.5X200 | Version |
| Order No. | 9010110000 | Screwdriver, Screwdriver |
| GTIN (EAN) | 4032248300754 | |
| Qty. | 1 ST | |
| Type | SDS 1.2X6.5X150 | Version |
| Order No. | 9009010000 | Screwdriver, Screwdriver |
| GTIN (EAN) | 4032248266869 | |
| Qty. | 1 ST | |