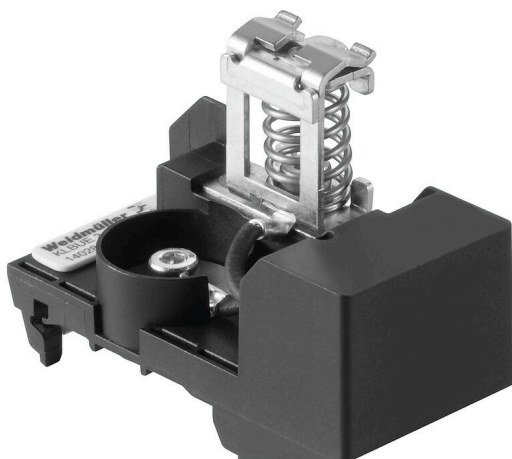


**KLBU 3-8 RC TS35****Weidmüller Interface GmbH & Co. KG**

Klingenbergstraße 26

D-32758 Detmold

Germany

[www.weidmueller.com](http://www.weidmueller.com)**Product image**

With our wide range of KLBÜ shield connections, you can achieve flexible and self-adjusting shield contacting and ensure error-free plant operation.

**General ordering data**

Version	Clamping yoke, Clamping yoke for shield connection, PA 66 GF 30
Order No.	<a href="#">1402830000</a>
Type	KLBU 3-8 RC TS35
GTIN (EAN)	4050118204674
Qty.	1 items

## KLBUE 3-8 RC TS35

Weidmüller Interface GmbH &amp; Co. KG

Klingenbergstraße 26

D-32758 Detmold

Germany

www.weidmueller.com

## Technical data

## Approvals

ROHS	Conform
------	---------

## Dimensions and weights

Depth	50 mm	Depth (inches)	1.9685 inch
Height	67.5 mm	Height (inches)	2.6575 inch
Width	35 mm	Width (inches)	1.378 inch
Net weight	61.29 g		

## Temperatures

Storage temperature	-25 °C...55 °C	Ambient temperature	-5 °C...40 °C
Continuous operating temp., min.	-25 °C	Continuous operating temp., max.	105 °C

## Environmental Product Compliance

RoHS Compliance Status	Compliant with exemption
RoHS Exemption (if applicable/known)	6c
REACH SVHC	Lead 7439-92-1
SCIP	6fc8563f-82a2-46cf-b3da-0e2c7ddd4382

## Material data

Basic material	PA 66 GF 30	Colour	black, Silver grey
UL 94 flammability rating	V-0		

## System specifications

Version	For a shield connection, With resistor	End cover plate required	No
Mounting rail	TS 35		

## Additional technical data

Installation advice	Direct mounting	Explosion-tested version	No
Type of mounting	Snap-on		

## Conductors for clamping (rated connection)

Stripping length	22 mm	Type of connection	Spring connection
Number of connections	1	Cable diameter, max.	8 mm
Cable diameter, min.	3 mm	Connection cross-section, stranded, max.	8 mm <sup>2</sup>
Connection cross-section, stranded, min. 3 mm <sup>2</sup>			

## General

Installation advice	Direct mounting	Mounting rail	TS 35
---------------------	-----------------	---------------	-------

## Rating data

Rated cross-section	8 mm <sup>2</sup>	Rated voltage	230 V
---------------------	-------------------	---------------	-------

## KLBUE 3-8 RC TS35

**Weidmüller Interface GmbH & Co. KG**

Klingenbergstraße 26  
D-32758 Detmold  
Germany

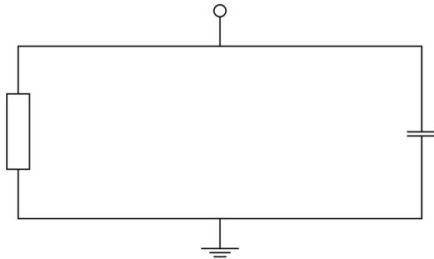
[www.weidmueller.com](http://www.weidmueller.com)

## Technical data

### Classifications

ETIM 8.0	EC002020	ETIM 9.0	EC002020
ETIM 10.0	EC002020	ECLASS 14.0	27-25-01-20
ECLASS 15.0	27-25-01-20		

## Drawings



## KLBUE 3-8 RC TS35

Weidmüller Interface GmbH &amp; Co. KG

Klingenbergstraße 26

D-32758 Detmold

Germany

www.weidmueller.com

## Accessories

## Steel



Steel DIN rails are the most widespread on the market. Among metal DIN rails, they have the lowest shortcircuit protection, similar to stainless steel.

## General ordering data

Type	TS 35X7.5 2M/ST/ZN	Version
Order No.	<a href="#">0383400000</a>	Terminal rail, Accessories, Steel, galvanic zinc plated and passivated,
GTIN (EAN)	4008190088026	Width: 2000 mm, Height: 35 mm, Depth: 7.5 mm
Qty.	40 M	
Type	TS 35X7.5/LL 2M/ST/ZN	Version
Order No.	<a href="#">0514500000</a>	Terminal rail, Accessories, Steel, galvanic zinc plated and passivated,
GTIN (EAN)	4008190046019	Width: 2000 mm, Height: 35 mm, Depth: 7.5 mm
Qty.	40 M	
Type	TS 35X15/2.3 2M/ST/ZN	Version
Order No.	<a href="#">0498000000</a>	Terminal rail, Accessories, Steel, galvanic zinc plated and passivated,
GTIN (EAN)	4008190042493	Width: 2000 mm, Height: 35 mm, Depth: 15 mm
Qty.	20 M	
Type	TS 35X15/LL 2M/ST/ZN	Version
Order No.	<a href="#">0236500000</a>	Terminal rail, Accessories, Steel, galvanic zinc plated and passivated,
GTIN (EAN)	4008190183967	Width: 2000 mm, Height: 35 mm, Depth: 15 mm
Qty.	20 M	

## Blank, adhesive backing



SM is a MultiCard marker for labelling control and signalling devices. The tags are clipped into the carriers or attached by means of the adhesive film already fitted to them. Customised tags can be created with the PrintJet CONNECT or Plotter marking systems.

- Users can quickly produce tags to suit their needs
- No need to stock expensive standard tags
- Highly resistant printing quality when using the PrintJet as a substitute for engraving
- For extreme demands, we recommend the ETO SM protective film
- Holders can be used for the 22-mm or 30-mm-diameter push-buttons from Siemens, ABB, Moeller and Télémécanique

For custom printing: Please send us a file of our labeling software M-Print PRO or M-Print PRO Online (without installation) for your labeling specifications.

## General ordering data

Type	SM 27/8 K MC NE WS	Version
Order No.	<a href="#">1812630000</a>	SwitchMark, Device markers, 8 x 27 mm, white
GTIN (EAN)	4032248296033	
Qty.	80 ST	

**KLBUE 3-8 RC TS35**
**Weidmüller Interface GmbH & Co. KG**

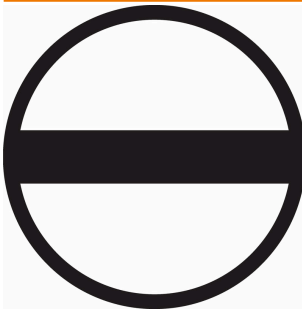
 Klingenbergstraße 26  
 D-32758 Detmold  
 Germany

[www.weidmueller.com](http://www.weidmueller.com)
**Accessories**
**Mounting support**


We offer a broad portfolio of mounting support for easy handling and supplementation of our products. From various tools to insulating sleeves and various screws, our components are matched to each other down to the last detail and thus facilitate assembly in compliance with the respective standards and protective regulations.

**General ordering data**

Type	BTWZ KLBUE	Version
Order No.	<a href="#">1742630000</a>	Tools, Operating tool
GTIN (EAN)	4008190980764	
Qty.	1 ST	

**Slotted screwdriver**


Slotted screwdriver with rounded blade SD DIN 5265, ISO 2380/2, output to DIN 5264, ISO 2380/1. ChromTop tip, SoftFinish grip

**General ordering data**

Type	SDS 0.6X3.5X200	Version
Order No.	<a href="#">9010110000</a>	Screwdriver, Screwdriver
GTIN (EAN)	4032248300754	
Qty.	1 ST	
Type	SDS 1.2X6.5X150	Version
Order No.	<a href="#">9009010000</a>	Screwdriver, Screwdriver
GTIN (EAN)	4032248266869	
Qty.	1 ST	