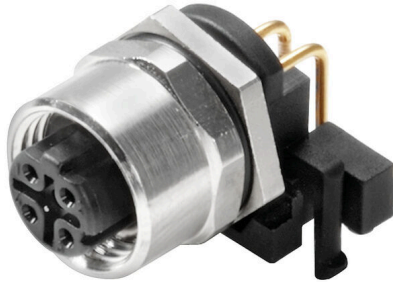


## IE-M12-PCBCE-PANEL-A

**Weidmüller Interface GmbH & Co. KG**  
Klingenbergstraße 26  
D-32758 Detmold  
Germany

[www.weidmueller.com](http://www.weidmueller.com)



### General ordering data

Version	PCB connection element M12, Solder connection, Cat.5 (ISO/IEC 11801), IP65 in acc. with DIN EN 60529
Order No.	<a href="#">1393470000</a>
Type	IE-M12-PCBCE-PANEL-A
GTIN (EAN)	4050118194241
Qty.	10 items

## IE-M12-PCBCE-PANEL-A

**Weidmüller Interface GmbH & Co. KG**  
 Klingenbergstraße 26  
 D-32758 Detmold  
 Germany

www.weidmueller.com

## Technical data

### Approvals

ROHS	Conform
------	---------

### Dimensions and weights

Net weight	10.88 g
------------	---------

### Temperatures

Storage temperature	Operating temperature	-40 °C...85 °C
Installation temperature		

### Environmental Product Compliance

RoHS Compliance Status	Compliant with exemption
RoHS Exemption (if applicable/known)	6c
REACH SVHC	Lead 7439-92-1
SCIP	9229992a-00b9-4096-8962-200a7f33e289

### Technical data of PCB plug-in connector

Number of poles	4	Coding	D-coded
Protection degree	IP65 in acc. with DIN EN 60529	Housing main material	CuZn, Polyamide, nickel-plated
Connection thread	M12		

### General Info

Number of poles	4	Connection 1	M12
Connection 2	Solder connection	Description of article	Connecting element, clip-on
Composition	Reflow compatible	Housing main material	CuZn, Polyamide, nickel-plated
Category	Cat.5 (ISO/IEC 11801)	Connection thread	M12
Protection degree	IP65 in acc. with DIN EN 60529		

### Important note

Notes

### Classifications

ETIM 8.0	EC003568	ETIM 9.0	EC003568
ETIM 10.0	EC003568	ECLASS 14.0	27-44-01-10
ECLASS 15.0	27-44-01-10		

