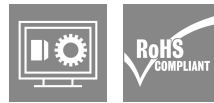
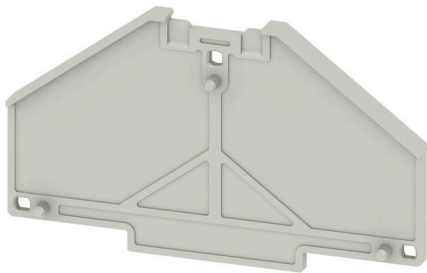


TW PRV4 SDR

Weidmüller Interface GmbH & Co. KG
Klingenbergstraße 26
D-32758 Detmold
Germany

www.weidmueller.com

Product image

The comprehensive accessories of the Klippon® Connect portfolio are perfectly matched down to the last detail. This facilitates mounting while adhering to required norms

General ordering data

Version	P-series, Partition plate, grey, 2 mm, Customer-specific printing
Order No.	1389210000
Type	TW PRV4 SDR
GTIN (EAN)	4050118189568
Qty.	10 items

TW PRV4 SDR

Weidmüller Interface GmbH & Co. KG
 Klingenbergstraße 26
 D-32758 Detmold
 Germany

www.weidmueller.com

Technical data

Approvals

ROHS Conform

Dimensions and weights

Depth	41.1 mm	Depth (inches)	1.6181 inch
Height	70 mm	Height (inches)	2.7559 inch
Width	2 mm	Width (inches)	0.0787 inch
Net weight	4.57 g		

Temperatures

Storage temperature	-25 °C...55 °C	Ambient temperature	-5 °C...40 °C
Continuous operating temp., min.	-50 °C	Continuous operating temp., max.	125 °C

Environmental Product Compliance

RoHS Compliance Status	Compliant without exemption
REACH SVHC	No SVHC above 0.1 wt%

Material data

Basic material	Polycarbonate	Colour	grey
UL 94 flammability rating	V-0		

System specifications

Version Customer-specific printing

Additional technical data

Snap-on Yes

Classifications

ETIM 8.0	EC000886	ETIM 9.0	EC000886
ETIM 10.0	EC000886	ECLASS 14.0	27-25-03-01
ECLASS 15.0	27-25-03-01		