

ACT20M-RTI-AO-S

Weidmüller Interface GmbH & Co. KG

Klingenbergstraße 26

D-32758 Detmold

Germany

www.weidmueller.com

Product image



ACT20M: The slim solution

- Safe and space-saving (6 mm) isolation and conversion
- Quick installation of the power supply unit using the CH20M mounting rail bus
- Easy configuration via DIP switch or FDT/DTM software
- Extensive approvals such as ATEX, IECEX, GL, DNV
- High interference resistance

General ordering data

Version	Temperature converter, With galvanic isolation, Input : Temperature, PT100, Output : I / U
Order No.	1375510000
Type	ACT20M-RTI-AO-S
GTIN (EAN)	4050118259667
Qty.	1 items

ACT20M-RTI-AO-S

Weidmüller Interface GmbH & Co. KG

Klingenbergstraße 26

D-32758 Detmold

Germany

www.weidmueller.com

Technical data

Approvals

Approvals



IECEX



ROHS Conform

UL File Number Search [UL Website](#)

Certificate no. (cULus) E337701

Dimensions and weights

Depth	114.3 mm	Depth (inches)	4.5 inch
Height	112.5 mm	Height (inches)	4.4291 inch
Width	6.1 mm	Width (inches)	0.2402 inch
Net weight	89 g		

Temperatures

Storage temperature	-40 °C...85 °C	Operating temperature	-25 °C...70 °C
Humidity at operating temperature	0...95 % (no condensation)	Humidity	40 °C / 95 % rel. humidity, no condensation

Probability of failure

MTBF 152 a

Environmental Product Compliance

RoHS Compliance Status	Compliant with exemption
RoHS Exemption (if applicable/known)	7a, 7cl
REACH SVHC	Lead 7439-92-1
SCIP	2f6dd957-421a-46db-a0c2-cf1609156924

Input

Sensor	PT100 (2-/3-/4- wire)	Number inputs	1
Line resistance in measuring circuit	≤ 50 Ω	Temperature input range	Configurable, PT100: -200...+850 °C, min. measurement range 10°C (RTD)
Influence of the sensor cable resistance	<0.002 Ω/Ω (@ 3/4-wire)		

Output

Number of outputs	1	load impedance voltage	≥ 10 kΩ
Load impedance current	≤ 600 Ω	Wire break detection	Yes, Configurable, 3.5 mA / 23 mA / none
Type	active, connected control must be passive	Output voltage, note	configurable, 0(2)...10 V, 0(1)...5 V
Output current	configurable, 0...20 mA, 4...20 mA	Output signal limit	<4 mA (average), <60 mA (pulse current), low duty cycle

General data

Accuracy	absolute accuracy: <±0.05 % of the measurement range, Basic accuracy: <±0.1°C
Protection degree	IP20

ACT20M-RTI-AO-S

Weidmüller Interface GmbH & Co. KG

Klingenbergstraße 26
D-32758 Detmold
Germany

www.weidmueller.com

Technical data

Supply voltage	24 V DC $\pm 30\%$ at terminal or via CH20M rail bus	
Step response time	Configurable, ≤ 30 ms, < 300 ms	
Mounting rail	TS 35	
Temperature coefficient	$\leq 0.01\%$ of the measurement range/°C or 0.02 °C/°C	
Delivery state	Setting parameters	Input
	Configuration	0 °C
	Setting parameters	Bandwidth
	Configuration	50 Hz
	Setting parameters	Output 1
	Configuration	0...20 mA
	Setting parameters	Output 2
	Configuration	0...20 mA
	Setting parameters	Sensor error detection
	Configuration	enabled
	Setting parameters	Step response time
	Configuration	< 30 ms
Setting parameters	Noise suppression	
Configuration	enabled	
Nominal power consumption	0.5 VA	
Configuration	DIP switch	
Operating altitude	≤ 2000 m	
Power consumption, max.	0.7 W	
Power consumption, typ.	0.49 W	
Delivery state	Input: 0 °C // Bandwidth: 50 Hz // Output 1: 0...20 mA // Output 2: 0...20 mA // Sensor error detection: enabled // Step response time: < 30 ms // Noise suppression: enabled	
Included in delivery	Instruction sheet	

Insulation coordination

EMC standards	IEC 61326-1	Surge voltage category	II
Pollution severity	2	Galvanic isolation	3-way isolator
Insulation voltage	2.5 kVeff / 1 min.	Rated voltage	300 Veff

Data for Ex applications (ATEX)

Marking	II 3 G Ex nA IIC T4 Gc	IECEx - gas labelling	Ex nA IIC T4 Gc, Standard: IEC 60079-0-15
Installation location	Device installed in safe area, zone 2		

Connection data

Type of connection	Screw connection	Tightening torque, min.	0.4 Nm
Tightening torque, max.	0.6 Nm	Clamping range, rated connection	2.5 mm ²
Clamping range, min.	0.5 mm ²	Clamping range, max.	2.5 mm ²
Wire connection cross section AWG, min.	AWG 30	Wire connection cross section AWG, max.	AWG 14

EMC conformity and approvals

EMC standards	IEC 61326-1	Standards	IEC 61010-1
---------------	-------------	-----------	-------------

Part description

Product description The ACT20M-RTI-AO-S configurable temperature transducer isolates and converts analogue signals. An analogue RTD input signal (Type Pt100) is linearly converted into an analogue output signal and galvanically isolated. The power supply is galvanically isolated from the input and output (3-way isolation) and this is done with direct wiring or over the Weidmüller rail bus.

Technical data

Classifications

ETIM 8.0	EC002919	ETIM 9.0	EC002919
ETIM 10.0	EC002919	ECLASS 14.0	27-21-01-29
ECLASS 15.0	27-21-01-29		

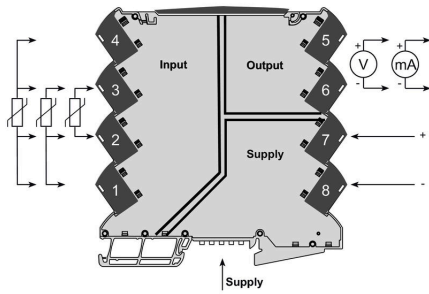
ACT20M-RTI-AO-S

Weidmüller Interface GmbH & Co. KG
 Klingenbergstraße 26
 D-32758 Detmold
 Germany

www.weidmueller.com

Drawings

Connection diagram



Dimensional drawing



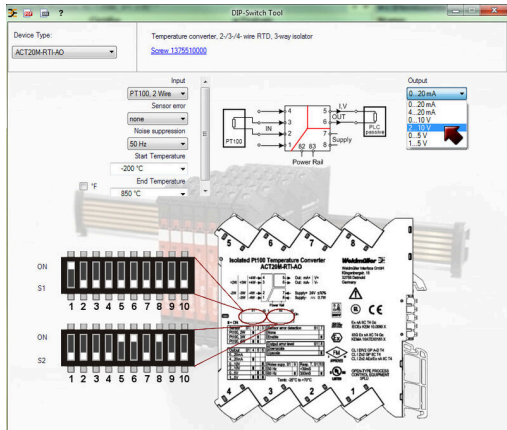
DIP switch setting

RTI sensor type	B1	Temperature range (°C)																
		Min.	S2	Max.	S2	Min.	S2	Max.	S2	Min.	S2	Max.	S2	Min.	S2	Max.	S2	
P1100 2 wire	1	-200	1	0	1	100	1	100	1	375	1	1	1	1	1	1	1	1
P1100 3 wire	1	-200	1	0	1	100	1	100	1	400	1	1	1	1	1	1	1	1
P1100 4 wire	1	-190	1	0	1	100	1	100	1	450	1	1	1	1	1	1	1	1
Output	4	100	1	10	1	120	1	150	1	500	1	1	1	1	1	1	1	1
0 - 20 mA	1	-20	1	25	1	130	1	150	1	600	1	1	1	1	1	1	1	1
4 - 20 mA	1	-20	1	25	1	130	1	150	1	600	1	1	1	1	1	1	1	1
0 - 10 V	1	0	1	65	1	140	1	160	1	700	1	1	1	1	1	1	1	1
0 - 20 V	1	0	1	65	1	140	1	160	1	700	1	1	1	1	1	1	1	1
0 - 5 V	1	0	1	45	1	100	1	120	1	800	1	1	1	1	1	1	1	1
1 - 5 V	1	0	1	45	1	100	1	120	1	800	1	1	1	1	1	1	1	1
20	1	0	1	65	1	140	1	160	1	700	1	1	1	1	1	1	1	1
60	1	0	1	65	1	140	1	160	1	700	1	1	1	1	1	1	1	1
100	1	0	1	65	1	140	1	160	1	700	1	1	1	1	1	1	1	1
200	1	0	1	65	1	140	1	160	1	700	1	1	1	1	1	1	1	1
300	1	0	1	65	1	140	1	160	1	700	1	1	1	1	1	1	1	1
400	1	0	1	65	1	140	1	160	1	700	1	1	1	1	1	1	1	1
500	1	0	1	65	1	140	1	160	1	700	1	1	1	1	1	1	1	1
600	1	0	1	65	1	140	1	160	1	700	1	1	1	1	1	1	1	1
700	1	0	1	65	1	140	1	160	1	700	1	1	1	1	1	1	1	1
800	1	0	1	65	1	140	1	160	1	700	1	1	1	1	1	1	1	1
900	1	0	1	65	1	140	1	160	1	700	1	1	1	1	1	1	1	1
1000	1	0	1	65	1	140	1	160	1	700	1	1	1	1	1	1	1	1

example for DIP switch setting (with ACT20M tool software)



Additional power supply option via bus



example for DIP switch setting (with ACT20 tool)

ACT20M-RTI-AO-S

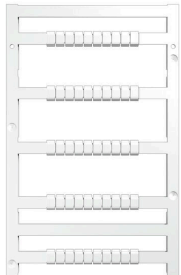
Weidmüller Interface GmbH & Co. KG

Klingenbergstraße 26
D-32758 Detmold
Germany

www.weidmueller.com

Accessories

Blank



MultiFit is the Weidmüller marker system used for other makes of terminals. Similar to the Weidmüller Dekafix, the markers of the MultiFit family are available ready-for-use with standard printing.

We recommend to carry out a test with sample markers on the terminals used when using MultiFit for the first time.

- One marker, suitable for different makes of terminals.
- Ready-to-use markers with standard printing
- Blank markers for printing with the PrintJet CONNECT or Plotter
- Delivery of individually printed markers according to customer CAE data or specifications
- One marking system for all applications

For custom printing: Please send us a file of our labeling software M-Print PRO or M-Print PRO Online (without installation) for your labeling specifications.

General ordering data

Type	MF 5/7.5 MC NE WS	Version	
Order No.	1877680000	MultiFit, Terminal marker, 5 x 7.5 mm, Pitch in mm (P): 7.50 Adels	
GTIN (EAN)	4032248468270	RKW, Phoenix, white	
Qty.	320 ST		

ACT20 (incl. DIN rail bus & powersupplies)



Power supply adapter modules for separate supply and distribution of the supply voltage: for the ACT20 series/MICROSERIES signal converters.

The 22.5/6.1 mm wide power-feed modules are mounted directly adjacent to the analogue signal converters. Then the 24 VDC supply voltage is optionally bridged via the CH20M (ACT20-series) rail bus or simply bridged over using the pluggable ZQV 4N (MICROSERIES) cross-connectors.

The ACT20-Feed-In-PRO-S can also detect faults coming from any of the devices mounted on the CH20 bus mounting profile.

In the event of an error or fault, the integrated status relay sends a common alarm to the external controller. In addition, two power supply units (as primary and backup supply) can be connected to the ACT20 Feed-In PRO-S. Two feed-in modules mounted to the CH20 bus mounting profile guarantee a 100% redundant power supply. Three LEDs are used to show the status of the power supply and error messages.

The ACT20M-Feed-In PRO can also be used in Ex zone 2 / Division 2 applications.

General ordering data

Type	ACT20-FEED-IN-BASIC-S	Version	
Order No.	1282490000	Supply module, Distributes supply voltage to rail bus	
GTIN (EAN)	4050118072730		
Qty.	1 ST		

ACT20M-RTI-AO-S

Weidmüller Interface GmbH & Co. KG
Klingenbergstraße 26
D-32758 Detmold
Germany

www.weidmueller.com

Accessories

Type	SAMPLE CH20M BUS 250MM	Version
	...	
Order No.	1335150000	Mounting rail bus system, Sample set, OMNIMATE Housing - series
GTIN (EAN)	4050118138382	CH20M, Width: 25.1 mm
Qty.	1 ST	
Type	SAMPLE CH20M BUS 250MM	Version
	...	
Order No.	1335140000	Mounting rail bus system, Sample set, OMNIMATE Housing - series
GTIN (EAN)	4050118138375	CH20M, Width: 25.1 mm
Qty.	1 ST	