

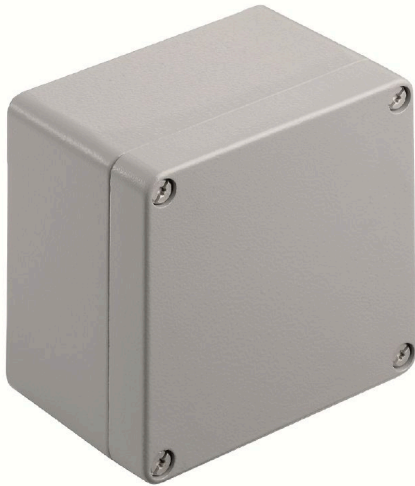
KLIPPON K41 EX RAL7001

Weidmüller Interface GmbH & Co. KG

Klingenbergstraße 26
D-32758 Detmold
Germany

www.weidmueller.com

Similar to illustration



The aluminium Klippon® K enclosures are suitable for use in an extremely wide range of different areas. Various components can be installed inside the enclosures, and will benefit in particular from the high temperature resistance, the excellent IP protection and the good impact resistance.

No matter what kind of application the customer is planning, Weidmüller is able to provide a wide range of aluminium enclosures precisely fitting the customer's requirements.

Klippon® K enclosures for hazardous areas are available on request.

Our extensive product range offers the following advantages:

- Available in two surface finishes: natural and powder-coated (RAL 7001)
 - With chloroprene moulded seal as standard (silicone moulded seal optionally available)
 - Standardised closure system with Torx slotted screw head for 19 enclosure sizes
 - Mounting holes outside of the gasket area
 - High IP protection classes: IP66, IP67 and IP68 according to DIN EN 60529
 - Impact resistance of up to 7 (10) Joules
 - The enclosures are approved according to ATEX, IECEx, cULus, and DNV GL as well as the empty enclosure standard.
- Suitable for railway applications according to EN 45545-2:2013
 - Alloy is resistant to salt water
 - Standardised distributor enclosures with threaded holes and a variety of terminal configurations

General ordering data

| | |
|------------|--|
| Version | Klippon K (aluminium empty enclosure), Empty enclosure, Aluminium enclosure, Height: 120 mm, Width: 122 mm, Depth: 81 mm, Basic material: Aluminium AlSi12, Powder-coated, textured, Silver grey |
| Order No. | 1329710000 |
| Type | KLIPPON K41 EX RAL7001 |
| GTIN (EAN) | 4050118133776 |
| Qty. | 1 items |

KLIPPON K41 EX RAL7001

Weidmüller Interface GmbH & Co. KG
 Klingenbergstraße 26
 D-32758 Detmold
 Germany

www.weidmueller.com

Technical data

Approvals

Approvals



ROHS Conform

Dimensions and weights

| | | | |
|-----------------------------|--------|----------------------------|-------------|
| Depth | 81 mm | Depth (inches) | 3.189 inch |
| Height | 120 mm | Height (inches) | 4.7244 inch |
| Width | 122 mm | Width (inches) | 4.8031 inch |
| Mounting dimension - height | 82 mm | Mounting dimension - width | 106 mm |
| Net weight | 955 g | | |

Temperatures

Operating temperature -60 °C...135 °C

Environmental Product Compliance

RoHS Compliance Status Compliant without exemption
 REACH SVHC No SVHC above 0.1 wt%

Cable glands, left

| | | | |
|-----|---|-----|---|
| M12 | 4 | M16 | 4 |
| M32 | 1 | M25 | 1 |
| M20 | 2 | | |

Cable glands, right

| | | | |
|-----|---|-----|---|
| M25 | 1 | M16 | 4 |
| M32 | 1 | M20 | 2 |
| M12 | 4 | | |

Cable glands, top/bottom

| | | | |
|-----|---|-----|---|
| M20 | 3 | M12 | 6 |
| M32 | 1 | M25 | 2 |
| M16 | 6 | | |

Certificate numbers enclosure

| | | | |
|---|---|---|---------------------------|
| Declaration of Conformity No. (DoC LVD) | DE PS2410 160412 001ISS03 | Attestation of Conformity No. (AoC) | DE PS2410 160308 001ISS03 |
| Certificate no. empty enclosure (INMETRO) | LMP 23.0526U | Certificate no. Terminal Box (ATEX) | IBEXU12ATEX1145 X |
| Certificate no. empty enclosure (ATEX) | IBEXU12ATEX1144 U | Certificate no. Terminal Box (INMETRO) | LMP 23.0527X |
| Certificate no. Terminal Box (IECEX) | IECEX IBE 13.0002X | Certificate no. empty enclosure (IECEX) | IECEX IBE 13.0001U |
| Certificate No. (IECEX) | IECEXIBE13.0002X | Certificate No. (ATEX) | IBEXU12ATEX1144U |
| Approval conditions | DNV, GL, RMRS, ATEX, IECEX, UL AEx Class Div., CCC, INMETRO | | |

KLIPPON K41 EX RAL7001

Weidmüller Interface GmbH & Co. KG
 Klingenbergstraße 26
 D-32758 Detmold
 Germany

www.weidmueller.com

Technical data

General information

| | | | |
|-----------------------------|--|---------------------------------|---|
| Material thickness of cover | 4 mm | Material thickness of enclosure | 4.5 mm |
| Operating temperature, max. | 135 °C | Operating temperature, min. | -60 °C |
| Lid attachment | M6 torx stainless steel screws with slot | Standards | IEC 60079-0, IEC 60079-7, IEC 60079-31, EN 45545-2:2013 |
| Surface finish | Powder-coated, textured | Impact resistance | 7 J ATEX version |
| Protection degree | IP66, IP67 | Basic material | Aluminium AISi12 |
| Seal material | Silicone | Torque for lid screws | 2.5 Nm |
| Integral fixing | Threaded holes M5 | Enclosure attachment | Holes 6 mm |
| Number of lid screws | 4 | Access opening: width | 113 mm |
| Flange plate | No | Lid | Yes |
| Access opening: height | 111 mm | Areas of use | Explosive risk zone, Process industry, Transportation, Packaging industry, Marine engineering, Machine construction, Harbour facilities |

horizontal assembly

| | | | |
|-----------------|------|-----------------------------|------|
| WDU 10 / ZDU 10 | 1x6 | WDU 2,5 / ZDU 2,5 / IDU 2,5 | 1x13 |
| WDU 4 / ZDU 4 | 1x11 | WDU 6 / ZDU 6 | 1x8 |

vertical assembly

| | | | |
|-----------------------------|---|---------------|---|
| WDU 2,5 / ZDU 2,5 / IDU 2,5 | * | WDU 4 / ZDU 4 | * |
|-----------------------------|---|---------------|---|

Classifications

| | | | |
|-------------|-------------|-------------|-------------|
| ETIM 8.0 | EC002503 | ETIM 9.0 | EC002503 |
| ETIM 10.0 | EC002503 | ECLASS 14.0 | 27-18-05-02 |
| ECLASS 15.0 | 27-18-05-02 | | |

KLIPPON K41 EX RAL7001

Weidmüller Interface GmbH & Co. KG
Klingenbergstraße 26
D-32758 Detmold
Germany

Drawings

www.weidmueller.com

Dimensioned drawing

