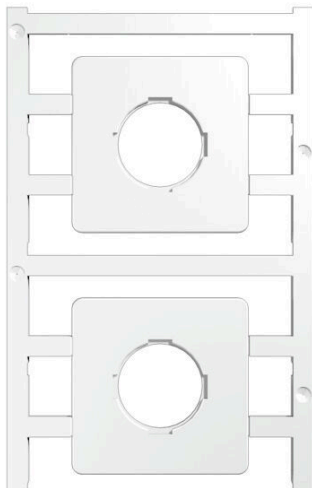


SM 44/44-21 MC SDR

Weidmüller Interface GmbH & Co. KG
 Klingenbergstraße 26
 D-32758 Detmold
 Germany

www.weidmueller.com



SM is a MultiCard marker for labelling control and signalling devices. The tags are clipped into the carriers or attached by means of the adhesive film already fitted to them. Customised tags can be created with the PrintJet CONNECT or Plotter marking systems.

- Users can quickly produce tags to suit their needs
- No need to stock expensive standard tags
- Highly resistant printing quality when using the PrintJet as a substitute for engraving
- For extreme demands, we recommend the ETO SM protective film
- Holders can be used for the 22-mm or 30-mm-diameter push-buttons from Siemens, ABB, Moeller and Télémécanique

For custom printing: Please send us a file of our labelling software M-Print PRO or M-Print PRO Online (without installation) for your labeling specifications.

General ordering data

| | |
|------------|--|
| Version | SwitchMark, Device markers, 44 x 44 mm, for cam switches, ABB, Type ON and OL40, To customer specification |
| Order No. | 1323640000 |
| Type | SM 44/44-21 MC SDR |
| GTIN (EAN) | 4050118126730 |
| Qty. | 4 items |

SM 44/44-21 MC SDR

Weidmüller Interface GmbH & Co. KG
 Klingenbergstraße 26
 D-32758 Detmold
 Germany

www.weidmueller.com

Technical data

Approvals

ROHS Conform

Dimensions and weights

| | | | |
|----------|--------|-----------------|-------------|
| Depth | 1.2 mm | Depth (inches) | 0.0472 inch |
| Height | 44 mm | Height (inches) | 1.7323 inch |
| Width | 44 mm | Width (inches) | 1.7323 inch |
| Diameter | 21 mm | Net weight | 3.56 g |

Temperatures

Operating temperature range -40...100 °C

Environmental Product Compliance

| | | | |
|--------------------------|-----------------------------|------------------|--|
| RoHS Compliance Status | Compliant without exemption | | |
| REACH SVHC | No SVHC above 0.1 wt% | | |
| Product Carbon Footprint | Cradle to gate | 0.039 kg CO2 eq. | |

General data

| | | | |
|--------------------------------------|---|-----------|--|
| Version | pluggable | | |
| Width | 44 mm | | |
| UL 94 flammability rating | V-2 | | |
| Operating temperature range, max. | 100 °C | | |
| Operating temperature range, min. | -40 °C | | |
| Colour | To customer specification | | |
| Halogen | No | | |
| Basic material | Polyamide 66 | | |
| Printed characters | Requires M-Print PRO File | | |
| Number of markers per packaging unit | Form of supply | MultiCard | |
| compatible printer | PRINTJET CONNECT , MCP BASIC 2 , MCP PLUS 2 | | |
| Number of markers per combination | 1 MultiCard = Device markers | | |
| Operating temperature range | -40...100 °C | | |
| Application/manufacturer | for cam switches, ABB, Type ON and OL40 | | |

Device markers

| | | | |
|----------|-------|---------|----|
| Diameter | 21 mm | Halogen | No |
|----------|-------|---------|----|

Classifications

| | | | |
|-------------|-------------|-------------|-------------|
| ETIM 8.0 | EC001288 | ETIM 9.0 | EC001288 |
| ETIM 10.0 | EC001288 | ECLASS 14.0 | 27-28-11-04 |
| ECLASS 15.0 | 27-28-11-04 | | |

