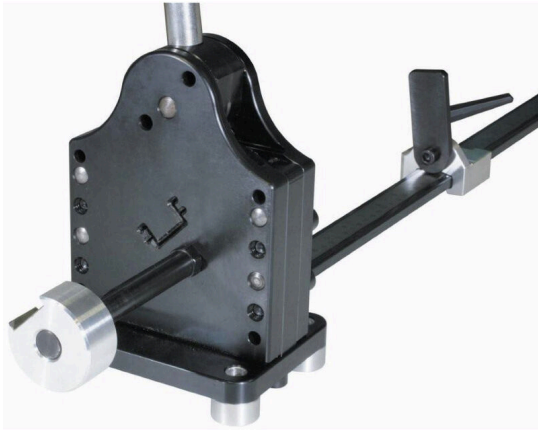


TSD 35/7.5 /15

Weidmüller Interface GmbH & Co. KG
Klingenbergstraße 26
D-32758 Detmold
Germany

www.weidmueller.com



Cutting tool for terminal rails and profiled rails

- TS 35/7.5 mm according to EN 50022 (s = 1.0 mm)
- TS 35/15 mm according to EN 50022 (s = 1.5 mm)

General ordering data

| | |
|------------|----------------------------|
| Version | Mounting rail cutter |
| Order No. | 1318510000 |
| Type | TSD 35/7.5 /15 |
| GTIN (EAN) | 4050118124057 |
| Qty. | 1 items |

Technical data

Dimensions and weights

| | | | |
|------------|---------|-----------------|-------------|
| Depth | 200 mm | Depth (inches) | 7.874 inch |
| Height | 110 mm | Height (inches) | 4.3307 inch |
| Width | 142 mm | Width (inches) | 5.5905 inch |
| Net weight | 12060 g | | |

Environmental Product Compliance

| | |
|------------------------|--|
| RoHS Compliance Status | Not affected |
| REACH SVHC | Lead 7439-92-1 |
| SCIP | b28ab223-64ec-44cf-adb0-4dd6ebcae 14 1 |

Technical data

| | |
|---------|---------------------|
| Version | One-hand mechanical |
|---------|---------------------|

Classifications

| | | | |
|-------------|-------------|-------------|-------------|
| ETIM 8.0 | EC000142 | ETIM 9.0 | EC000142 |
| ETIM 10.0 | EC000142 | ECLASS 14.0 | 21-04-47-01 |
| ECLASS 15.0 | 21-04-47-01 | | |