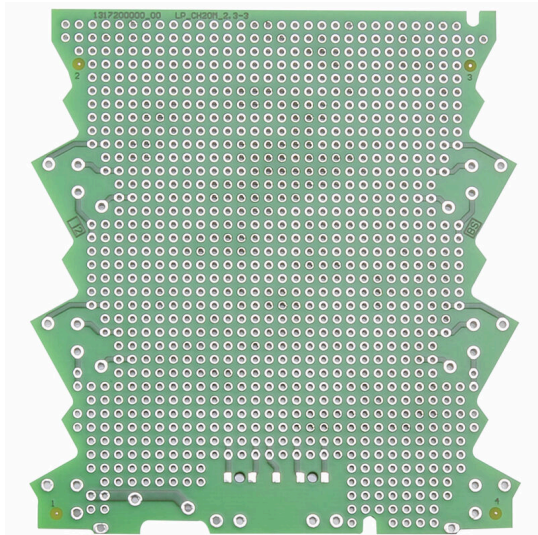


## SAMPLE LP CH20M PPP

**Weidmüller Interface GmbH & Co. KG**  
 Klingenbergstraße 26  
 D-32758 Detmold  
 Germany

[www.weidmueller.com](http://www.weidmueller.com)

### Product image



Future-proof solutions for industrial electronics for mounting in the control cabinet

Electronichousings are crucial for the integration of electronic assemblies in the control cabinet. They protect sensitive components and ensure reliable connections. Thanks to high-quality materials, they offer long-term solutions for industrial applications.

Your advantages:

Flexibility: Scalable solutions for different requirements

Safety: Robust design to protect your electronics

Efficiency: Simple installation and optimized connection technology

Housing solutions for every application:

Our portfolio includes modular housings (e.g. CH20M), small housings and profile housings designed for control, signal conversion and safety applications. These housings offer customizable designs, easy mounting and high connection capacity.

Customization:

In addition to standard solutions, we offer customization in design, color and printing. The Weidmüller Configurator enables individual design.

Our service:

We offer expert advice and technical support for your projects. In the download area you will find CAD data, data sheets and installation instructions for efficient integration.

### General ordering data

Version	Electronics housing sample, OMNIMATE Housing - series CH20M green, PCB for self-assembly, CH20M12 - 67, For 3 connection levels, Width: 1.6 mm
Order No.	<a href="#">1317200000</a>
Type	SAMPLE LP CH20M PPP
GTIN (EAN)	4050118121131
Qty.	1 items

**SAMPLE LP CH20M PPP**

**Weidmüller Interface GmbH & Co. KG**  
 Klingenbergstraße 26  
 D-32758 Detmold  
 Germany

www.weidmueller.com

**Technical data**

**Approvals**

ROHS	Conform
------	---------

**Dimensions and weights**

Depth	99 mm	Depth (inches)	3.8976 inch
Height	88 mm	Height (inches)	3.4646 inch
Width	1.6 mm	Width (inches)	0.063 inch
Net weight	25 g		

**Environmental Product Compliance**

RoHS Compliance Status	Compliant
REACH SVHC	No SVHC above 0.1 wt%

**Material data**

Surface finish	untreated	Basic material	PA 66 GF 30
----------------	-----------	----------------	-------------

**General data**

Colour	green	Protection degree	IP20 in installed state
Colour chart (similar)	RAL 6032		

**Classifications**

ETIM 8.0	EC001031	ETIM 9.0	EC001031
ETIM 10.0	EC001031	ECLASS 14.0	27-19-02-04
ECLASS 15.0	27-19-02-04		