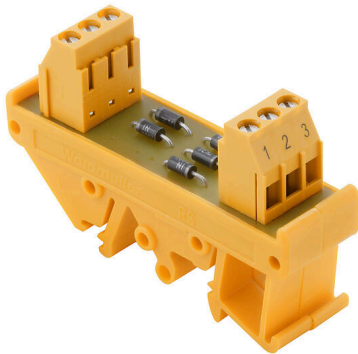


RSD K20 LP/LP

Weidmüller Interface GmbH & Co. KG
Klingenbergstraße 26
D-32758 Detmold
Germany

www.weidmueller.com



Similar to illustration

Interfaces with diodes for surge voltage protection, lamp testing or protection against reversed polarity.

General ordering data

Version	Interface, RSD, Common cathode, Screw connection
Order No.	1312790000
Type	RSD K20 LP/LP
GTIN (EAN)	4050118115826
Qty.	1 items

RSD K20 LP/LP

Weidmüller Interface GmbH & Co. KG

Klingenbergstraße 26

D-32758 Detmold

Germany

www.weidmueller.com

Technical data

Approvals

Approvals



ROHS Conform

UL File Number Search [UL Website](#)

Certificate No. (UR) E141197

Dimensions and weights

Depth	42 mm	Depth (inches)	1.6535 inch
Height	70 mm	Height (inches)	2.7559 inch
Width	60 mm	Width (inches)	2.3622 inch
Net weight	67.8 g		

Temperatures

Storage temperature	-40...60 °C	Operating temperature	0...55 °C
---------------------	-------------	-----------------------	-----------

Environmental Product Compliance

RoHS Compliance Status	Compliant with exemption		
RoHS Exemption (if applicable/known)	7a		
REACH SVHC	Lead 7439-92-1		
SCIP	c81824f0-4ab4-46d2-8ea1-d0fb421fd3a2		

Rated data UL

Rated current IN	1 A	Operating temperature UL, min.	-25 °C
Operating temperature UL, max.	50 °C	Rated current I _{max}	1 A
Rated voltage UN	230 V		

Connection data

Type of component	Diode 1N4007	Configuration	Shared anode
-------------------	--------------	---------------	--------------

Rating Data

Rated voltage	230 V	Rated current per connection	1 A
Components	Diode	Value	1N4007
Max. recurring peak voltage	1000 V		

Insulation coordination (EN50178)

According to	DIN EN 50178	Rated insulation voltage	230 V
Surge voltage category	II	Pollution severity level	2
Pulse voltage test (1,2/50µs)	2 kV	Insulation test voltage AC	0.35 kV

Connection field

Min. wire cross-section, AWG	AWG 26	Type of connection	Screw connection
Sleeve with plastic collar, max.	2.5 mm ²	Flexible with sleeve, min.	0.5 mm ²
Flexible with sleeve, max.	2.5 mm ²	Flexible, max. H05(07) V-K	4 mm ²
Flexible, min. H05(07) V-K	0.5 mm ²	Solid, max. H05(07) V-U	6 mm ²

RSD K20 LP/LP**Weidmüller Interface GmbH & Co. KG**Klingenbergstraße 26
D-32758 Detmold
Germanywww.weidmueller.com**Technical data**

Solid, min. H05(07) V-U	0.5 mm ²	Stripping length	6 mm
Tightening torque, max.	0.6 Nm	Tightening torque, min.	0.5 Nm
Clamping range, max.	6 mm ²	Clamping range, min.	0.5 mm ²
Max. wire cross-section, AWG	AWG 12		

Classifications

ETIM 8.0	EC002780	ETIM 9.0	EC002780
ETIM 10.0	EC002780	ECLASS 14.0	27-14-11-52
ECLASS 15.0	27-14-11-52		

RSD K20 LP/LP

Weidmüller Interface GmbH & Co. KG
Klingenbergstraße 26
D-32758 Detmold
Germany

www.weidmueller.com

Drawings



RSD A



RSD K