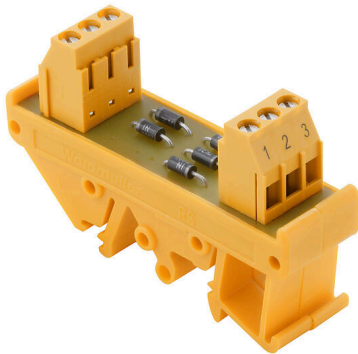


## RSD K10 LP/LP

**Weidmüller Interface GmbH & Co. KG**  
Klingenbergstraße 26  
D-32758 Detmold  
Germany

[www.weidmueller.com](http://www.weidmueller.com)



Similar to illustration

Interfaces with diodes for surge voltage protection, lamp testing or protection against reversed polarity.

### General ordering data

Version	Interface, RSD, Common cathode, Screw connection
Order No.	<a href="#">1312770000</a>
Type	RSD K10 LP/LP
GTIN (EAN)	4050118115819
Qty.	1 items

## RSD K10 LP/LP

Weidmüller Interface GmbH &amp; Co. KG

Klingenbergstraße 26

D-32758 Detmold

Germany

www.weidmueller.com

## Technical data

## Approvals

Approvals



ROHS	Conform
UL File Number Search	<a href="#">UL Website</a>
Certificate No. (UR)	E141197

## Dimensions and weights

Depth	42 mm	Depth (inches)	1.6535 inch
Height	70 mm	Height (inches)	2.7559 inch
Width	35 mm	Width (inches)	1.378 inch
Net weight	52 g		

## Temperatures

Storage temperature	-40...60 °C	Operating temperature	0...55 °C
---------------------	-------------	-----------------------	-----------

## Environmental Product Compliance

RoHS Compliance Status	Compliant with exemption
RoHS Exemption (if applicable/known)	7a
REACH SVHC	Lead 7439-92-1
SCIP	c81824f0-4ab4-46d2-8ea1-d0fb421fd3a2

## Rated data UL

Rated current I <sub>N</sub>	1 A	Operating temperature UL, min.	-25 °C
Operating temperature UL, max.	50 °C	Rated current I <sub>max</sub>	1 A
Rated voltage UN	230 V		

## Connection data

Type of component	Diode 1N4007	Configuration	Shared anode
-------------------	--------------	---------------	--------------

## Rating Data

Rated voltage	230 V	Rated current per connection	1 A
Components	Diode	Value	1N4007
Max. recurring peak voltage	1000 V		

## Insulation coordination (EN50178)

According to	DIN EN 50178	Rated insulation voltage	230 V
Surge voltage category	II	Pollution severity level	2
Pulse voltage test (1,2/50µs)	2 kV	Insulation test voltage AC	0.35 kV

## Connection field

Min. wire cross-section, AWG	AWG 26	Type of connection	Screw connection
Sleeve with plastic collar, max.	2.5 mm <sup>2</sup>	Flexible with sleeve, min.	0.5 mm <sup>2</sup>
Flexible with sleeve, max.	2.5 mm <sup>2</sup>	Flexible, max. H05(07) V-K	4 mm <sup>2</sup>
Flexible, min. H05(07) V-K	0.5 mm <sup>2</sup>	Solid, max. H05(07) V-U	6 mm <sup>2</sup>

**RSD K10 LP/LP**

**Weidmüller Interface GmbH & Co. KG**  
Klingenbergstraße 26  
D-32758 Detmold  
Germany

[www.weidmueller.com](http://www.weidmueller.com)

**Technical data**

Solid, min. H05(07) V-U	0.5 mm <sup>2</sup>	Stripping length	6 mm
Tightening torque, max.	0.6 Nm	Tightening torque, min.	0.5 Nm
Clamping range, max.	6 mm <sup>2</sup>	Clamping range, min.	0.5 mm <sup>2</sup>
Max. wire cross-section, AWG	AWG 12		

**Classifications**

ETIM 8.0	EC002780	ETIM 9.0	EC002780
ETIM 10.0	EC002780	ECLASS 14.0	27-14-11-52
ECLASS 15.0	27-14-11-52		

**RSD K10 LP/LP**

**Weidmüller Interface GmbH & Co. KG**  
Klingenbergstraße 26  
D-32758 Detmold  
Germany

[www.weidmueller.com](http://www.weidmueller.com)

**Drawings**



RSD A



RSD K