

## KLIPPON POK 165609

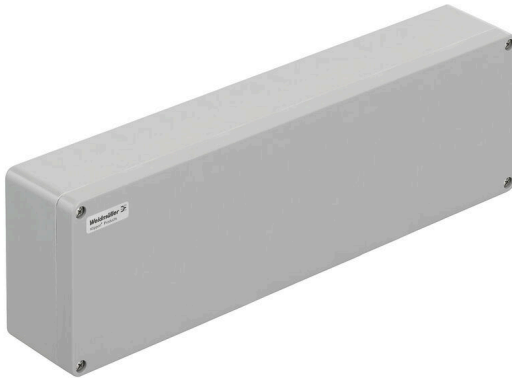
**Weidmüller Interface GmbH & Co. KG**

Klingenbergstraße 26

D-32758 Detmold

Germany

[www.weidmueller.com](http://www.weidmueller.com)



The Klippon® POK enclosure range is made from a high-quality glass fibre reinforced polyester and is ideal for applications and environments where corrosion resistance, impact resistance and a high IP protection class are a requirement.

Key features of the extensive product range:

- Available in 17 sizes
- Two standard finishes (colours): grey (similar to RAL 7001 for industrial use) and black (similar to RAL 9011 for harsh environments, Ex)
- Cover with stainless steel screws in cross-head / slotted design
- Moulded gasket made of silicone or chloroprene
- Fixing holes outside the sealed area to ensure high ingress protection of IP66
- Impact resistance up to 7 Joules
- Mounting directly in the enclosure or using an internal mounting plate
- Direct wall mounting possible using fixing holes or mounting feet
- Fastening thread to attach mounting rails and plates
- Up to E60 fire rating dependent on the configuration
- Weidmüller can manufacture and supply this enclosure to match customer specifications - fitted with all necessary terminals and cable glands.

### General ordering data

Version	Klippon POK (polyester empty enclosure), Empty enclosure, Height: 160 mm, Width: 560 mm, Depth: 90 mm, Basic material: Glass fibre-reinforced polyester, untreated, polished, Silver grey
Order No.	<a href="#">1305920000</a>
Type	KLIPPON POK 165609
GTIN (EAN)	4050118104882
Qty.	1 items

**KLIPPON POK 165609**

**Weidmüller Interface GmbH & Co. KG**  
 Klingenbergstraße 26  
 D-32758 Detmold  
 Germany

www.weidmueller.com

**Technical data**

**Approvals**

Approvals



ROHS	Conform
UL File Number Search	<a href="#">UL Website</a>
Certificate no. (cULus)	E256877

**Dimensions and weights**

Depth	90 mm	Depth (inches)	3.5433 inch
Height	160 mm	Height (inches)	6.2992 inch
Height of lowest version	90 mm	Width	560 mm
Width (inches)	22.0472 inch	Mounting dimension - height	110 mm
Mounting dimension - width	540 mm	Net weight	3327 g

**Temperatures**

Operating temperature	-40 °C...100 °C
-----------------------	-----------------

**Environmental Product Compliance**

RoHS Compliance Status	Compliant with exemption
RoHS Exemption (if applicable/known)	6c
REACH SVHC	Lead 7439-92-1
SCIP	afb385d0-c52b-4449-8502-203596817ab0

**Cable glands, left**

M12	11	M16	6
M32	2	M25	2
M20	4	M40	1

**Cable glands, right**

M25	2	M16	6
M40	1	M32	2
M20	4	M12	11

**Cable glands, top/bottom**

M20	32	M12	66
M40	8	M32	10
M25	12	M16	58

**Certificate numbers enclosure**

Declaration of Conformity No. (DoC LVD)	DE PS2401 160412 001ISS02	Certificate No. (DNV)	TAE00002R2
Approval conditions	cULus, LR, DNV	Certificate no. (cULus)	E256877

**General information**

Material thickness of cover	5 mm	Material thickness of enclosure	5.99 mm
Operating temperature, max.	100 °C	Operating temperature, min.	-40 °C

## KLIPPON POK 165609

**Weidmüller Interface GmbH & Co. KG**  
 Klingenbergstraße 26  
 D-32758 Detmold  
 Germany

www.weidmueller.com

### Technical data

UL 94 flammability rating	V-0	Lid attachment	Slotted/Phillips screws
Standards	DIN EN 62208 - Empty enclosure standard, DIN 4102-12	Surface finish	untreated, polished
Impact resistance	5 J version standard	Protection degree	IP66
Basic material	Glass fibre-reinforced polyester	Seal material	Chloroprene
Torque for lid screws	2.5 Nm	Enclosure attachment	Installation through the housing rear wall, Fixing lugs
Protection class (UL)	Type 4, Type 4X	Number of lid screws	6
Access opening: width	548.02 mm	Required tool	<a href="#">SDK PZ2</a>
Flange plate	No	Max. payload	35.84 kg
Lid	Yes	Access opening: height	148.02 mm
Areas of use	Harbour facilities, Machine construction, Process industry, Transportation		

#### horizontal assembly

WDU 10 / ZDU 10	1x49	WDU 16 / ZDU 16	1x41
WDU 2,5 / ZDU 2,5 / IDU 2,5	1x94	WDU 4 / ZDU 4	1x79
WDU 6 / ZDU 6	1x60		

#### vertical assembly

WDU 2,5 / ZDU 2,5 / IDU 2,5	*	WDU 4 / ZDU 4	*
-----------------------------	---	---------------	---

#### Important note

Product information      The fire rating up to E60 acc. to DIN 4102-12 depends on concrete configurations / installations (details see "Declaration of Manufacturer" in "Downloads")

#### Classifications

ETIM 8.0	EC000261	ETIM 9.0	EC000261
ETIM 10.0	EC000261	ECLASS 14.0	27-18-01-01
ECLASS 15.0	27-18-01-01		

**KLIPPON POK 165609**

**Weidmüller Interface GmbH & Co. KG**  
Klingenbergstraße 26  
D-32758 Detmold  
Germany

**Drawings**

[www.weidmueller.com](http://www.weidmueller.com)

