

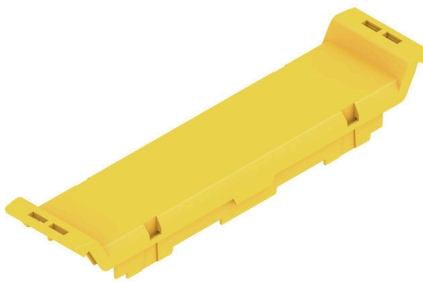
**CH20M22 FC TYL 2083****Weidmüller Interface GmbH & Co. KG**

Klingenbergstraße 26

D-32758 Detmold

Germany

www.weidmueller.com

**Product image**

The front element of the CH20M housing offers you numerous options for individual design and functionality. You can choose between various printing methods such as pad printing and laser engraving to implement your designs precisely and attractively.

Laser cut-outs for electronic components are also possible. Markers can also be used. The front element can be equipped with or without a hinged lid.

**General ordering data**

Version	Front element, OMNIMATE Housing - series CH20M Traffic yellow, Front element, Width: 22.5 mm
Order No.	<a href="#">1304240000</a>
Type	CH20M22 FC TYL 2083
GTIN (EAN)	4050118103519
Qty.	50 items

## CH20M22 FC TYL 2083

**Weidmüller Interface GmbH & Co. KG**  
 Klingenbergstraße 26  
 D-32758 Detmold  
 Germany

www.weidmueller.com

## Technical data

### Approvals

ROHS	Conform
------	---------

### Dimensions and weights

Depth	15.5 mm	Depth (inches)	0.6102 inch
Height	100 mm	Height (inches)	3.937 inch
Width	22.5 mm	Width (inches)	0.8858 inch
Length	0 mm	Net weight	6 g

### Temperatures

Ambient temperature	-25 °C...85 °C	Operating temperature range	-40...120 °C
Humidity	5 - 93% rel. humidity, Tu = 40°C, no condensation		

### Environmental Product Compliance

RoHS Compliance Status	Compliant without exemption
REACH SVHC	No SVHC above 0.1 wt%

### Material data

UL 94 flammability rating	V-0	Insulating material	PA 66 GF 30
Insulating material group	I	Surface finish	untreated
Basic material	Plastic	Comparative Tracking Index (CTI)	600 ≤ CTI

### General data

Colour	Traffic yellow	Protection degree	IP20 in installed state
Colour chart (similar)	RAL 1023	Information regarding whole assembly, see referenced articles	<a href="#">CH20M22 B BK/OR 2010</a>
Encapsulation option	No		

### Component properties

Flip cover mountable	No	Marker integrateable	No
----------------------	----	----------------------	----

### Individualization options

Customer specific cutouts possible	Yes	Customer specific labelling possible	Yes
Customer specific order process	See guideline under downloads	Processing possibilities	Laser processing, Milling

### Classifications

ETIM 8.0	EC001031	ETIM 9.0	EC001031
ETIM 10.0	EC001031	ECLASS 14.0	27-19-06-03
ECLASS 15.0	27-19-06-03		

**Drawings**

**Product image**



**Dimensioned drawing**

